



SECOND
AUTUMN
BULL SALE

23 March 2018 at 12:00pm
On Property Sale

35 BULLS

From leading industry
reference sires

“Breeding Quality from Head to Tail”

LOT 2
MERLEWOOD
HEIRLOOM M44



LOT 3
MERLEWOOD
HEIRLOOM M33



LOT 5
MERLEWOOD
HEIRLOOM H37



MERLEWOOD ANGUS

SECOND AUTUMN BULL SALE

23 March 2018 at 12:00pm
On Property Sale

880 Berrys Creek Rd, Mirboo North Victoria 3871

35 BULLS

From leading industry reference sires

Stud Principals

Daniel and Anne Marie Barrow
M. 0425 862 941
E. merlewoodangus@bigpond.com

Farm Manager

Luke Buchanan
M. 0458 588 810

Breed Consultant :

Wille Milne M.0428 793 521

LANDMARK

Landmark :

Ray Attwell M.0428 836 136
Peter Godbolt M. 0457 591 929
Brian McCormack 0407 931 735

Elders

Elders :

Ross Milne M. 0408 057 558
Dennis Linley M. 0417 052 445
Peter Rollason M. 0419 600 323



"Breeding Quality from Head to Tail"

Sale Information

INSPECTION:

Sale commences at 12:00pm on Friday 23 March 2018 with sale bulls being penned and available for viewing from 8:00am onwards on sale day. The bulls will be sold by open-cry auction with video footage of each sale bull displayed on large screens in the background. With the welfare of our animals being our utmost priority, along with health and safety of both humans and cattle, we believe viewing the animals in their pen prior to the auction and recapping each lot with a live video segment during the auction makes for a pleasurable day for farmers and bulls alike.

Ben Hooper from Clear Vision Imaging will be filming the bulls and delivering the video footage on the day. If, for some reason, you missed us at our Beef Week Open Day and wish to inspect the bulls prior to our sale day, please feel free to call Anne Marie on 0425 862 941 to arrange a private inspection. General queries welcome too.

TELEPHONE BIDDING:

Picked out your favourite bull at our Beef Week Open Day or at a private inspection and can't make the sale day? Not a problem. Just contact Ross Milne of Elders on 0408 057 558 or Ray Attwell of Landmark on 0428 836 126 to arrange telephone bidding.

HERD HEALTH:

All sale bulls are vaccinated for Vibriosis and Pestivirus (BVDV). **Please note that your bull is due his Vibrovax and Pestiguard annual booster in 2019.**

These are important annual vaccinations (one shot booster) to ensure continued immunity against both the reproductive diseases of Vibriosis and Pestivirus respectively.

All our bulls receive 7-in-1 vaccination at weaning with their annual booster being administered pre-sale. **Please note that your bulls is due his 7-in1 vaccination (one shot booster) in January 2019.**

All cattle at Merlewood Angus are drenched on an as-needed basis and we practice drench rotation – current drench is Cydectin.

All sale bulls have been fertility tested and independently structurally assessed by Ian Moreland of Studcare Genetics.

All sale bulls are performance recorded HBR or APR with Angus Breedplan and are registered with Angus Society. We will arrange for transfer of ownership with the Angus Society of all sale bulls. Purchasing a registered bull enables you to sell his offspring into select export markets – speak to your local stock agent for more details. If you have an Angus Society prefix, please provide it when you register for the bull sale. Merlewood Angus cattle are J-BAS 8 accredited. This means that in addition to the implementation of our biosecurity plan, we are audited yearly by an accredited vet and our animals are bloodtested every three years in accordance with industry best practice.

GENETIC CONDITIONS:

The gene status of all sale bulls is clearly displayed for each individual lot.

OUTSIDE AGENT REBATE:

3% rebate will be paid to outside agents that accompany the purchaser to the sale and settle within 7 days of sale date.

1.5% rebate will be paid to outside agents that introduce a client in writing 48 hrs prior to the sale and settle within 7 days of sale date.

0.5% rebate will be paid to outside agents that handle the sale transaction only and settle within 7 days of sale date.

GST:

As is common industry practice, all bulls are sold GST exclusive.

SELLING AGENTS:

Landmark and Elders are Merlewood Angus' selling agents. This year our auctioneer will be Ross Milne.





BRINGING YOUR BULL HOME:

Taking the hassle out of arranging transport and to ensure the safe and professional transport of your purchased sale sire(s), our chosen transport carrier is Echuca Rural Transport. With stock cameras installed along the total length of the truck sending live video footage to a screen mounted in the truck cab, your driver can monitor your bull at all times during the journey.

All you have to do is simply fill out your details on the form provided when settling with the Landmark team. All sale bulls will be delivered over the three consecutive days following the sale, Saturday 24 March 2018 to Monday 26 March 2018.

Courtesy of Merlewood Angus free freight will be provided for distances within 150km of our property. Out-with 150km additional costs incurred are the responsibility of the purchaser.

INSURING YOUR BREEDING ASSET:

Please note that at the fall of the hammer the bull belongs to you! As such we strongly recommend that you take out insurance. Landmark will be available on the day to arrange insurance in the event you don't already have an insurance agent for your bulls. Merlewood Angus recommend insuring all bulls for at least the first 2 years of their working life.

PRE & POST SALES SERVICE:

We believe that purchasing your bull is only the start of the cattle conversation. We encourage open and honest communication at all times. We are here to answer all your breeding queries and assist you with choosing a bull each year for your commercial breeding program, and as we get to know both you and your herd we can offer a more tailored-service. For all your pre-sale queries contact Anne Marie and Daniel on 0425 862 941 or for specific breed queries please feel free to call our breed consultant Willie Milne 0428 793 521 or your local Elders or Landmark livestock agent.

MERLEWOOD ANGUS GUARANTEE:

Merlewood Angus sale bulls are backed with a 12-month guarantee. In the event of a sale bull proving to be structurally unsound, infertile or incapable of service during this period we will:

1) Replace the bull with a satisfactory replacement

Or

2) If no replacement bull is available, we will issue a refund equal to the value remaining (i.e. sale price minus salvage value)

A veterinary certificate is to be supplied by the purchaser on request.

This guarantee is in addition to normal terms and conditions governing auction sales and as such the vendors decision will be final.

Merlewood Angus bulls are rigorously checked and continually monitored and evaluated. Only the best get to make it to sale day.

SEMEN RIGHTS:

Merlewood Angus retains the right to collect semen from all sale bulls for use within their own herd. In the event of the semen collection right being exercised, this will be at a time convenient to the owner and at Merlewood Angus' cost

DISCLAIMER:

Whilst all due care and attention has been paid to accuracy in the compilation of this catalogue and the information, neither the vendors, selling agents or representatives there of assume any responsibility for the correctness, use or interpretation of this information on animals included herein.

“Breeding Quality from Head to Tail”



Welcome

Dear Fellow Farmers

It is hard to believe that it is almost a year since we sat down, in the midst of the craziness of getting sale ready, to write our first ever welcome letter. Our Inaugural Autumn Bull Sale was all that we dreamt it would be and more. We want to thank you for being part of the dream – part of the Merlewood Angus team and contributing to our successful bull sale in 2017. A year later, a year older and a little wiser, we are excitedly putting the finishing touches to our second annual autumn bull sale catalogue. Even writing those words I feel a tremor of excitement as my fingers hover over the keyboard.

Passionate, as the day we started Merlewood Angus, we look forward to once again bringing leading industry genetics to the Gippsland Breeding Bowl. Included in this year's autumn bull sale are the following sire groups:

- 12 No. Merlewood Heirloom (Ireland Fletcher F1 grandsons)
- 9 No. Merlewood Jarcevo (Tuhwharetoa Regent D145 grandsons)
- 4 No. Merlewood Emperor (Te Mania Emperor grandsons)
 - 4 No. Merlewood Kingdom
 - 3 No. Merlewood V A R Reserve
 - 2 No. Merlewood Heirarchy
 - 1 No. Merlewood Jindra

Merlewood Heirloom bulls consistently achieved the highest daily weight gains in their contemporary group and showcase typical Heirloom traits of thickness, great structure and terrific temperament. When we think Merlewood Heirloom we think #capacity #capacity #capacity

Merlewood Jarcevo bulls have muscle in all the right places. Portraying length and softness, there is sure to be a Regent grandson here to suit your program.

The only Merlewood Jindra bull in the sale (LOT 8), this one is well worth a look – a quiet contender! In addition to a structural assessment score of 5 across the board, his other traits are pretty impressive too. A low birthweight and high ribfat coupled with +VE ribfat and rumpfat that are well in excess of breed average, this bull defiantly deserves more than just a look. In addition to being a Regent grandson, this bull has strong maternal lines going back to Te Mania Beac.

Here at Merlewood Angus we have enjoyed a fun year working up with clients at the VLE as well as on farm. Both, Daniel and myself, get a thrill each and every time we see Merlewood Angus bloodlines being sold through the sale yards and are proud to be contributing to the black angus genetic pool in the Gippsland. We love to support our clients and whenever the way to say thank you for purchasing a Merlewood Angus bull is to help promote his offspring for you. When it comes to you to sell Merlewood progeny get in touch and we will happily promote this for you on our social media and whenever the calendar permits we will join you at the VLE on sale day.

Another highlight for us are the on-farm visits when we are invited to come out and experience your farm. The on-farm visits are really special for us. Not only do these visits give us the opportunity to see the progeny of our registered bulls



ANNE MARIE BARROW
Business Head

"If you have a farm and a library, you have everything you need."



DANIEL BARROW
Operations

"With hard work and humility, we can achieve all our goals."

places.
egent

s bull is
perfect
EBV's
EMA bull
ccess of
a second
has

r catching
niel and
ood
nd are
ool here in
at better
gus bull
es time
e will
if our
y itself.

re get
isits
s the
but we

also get to see your breeding females. This enables us to tailor

our breeding advice even further to suit you and your farm and your individual program. We also love seeing our bulls settled, happy and relaxed in their new homes. On the topic of farm visits, each year we interview one or two of our clients on their farms and you can hear what they have to say by visiting the Paddock Patter section of our website under Media Minutes.

Continuing on with the theme of media, we like to share what's happening here at Merlewood Angus not only with you, our clients, but also the general public at large. EVERY Tuesday at 10am you can join us live on Facebook for our weekly edition of TUESDAY CHEW BYTES. With around +/-200 views each week this is a fun and informative way to stay engaged with Merlewood Angus throughout the year.

In addition to social media interaction, we encourage open lines of communication at all times and we are only ever a phone call away.

So with no further ado, I will close this letter and on behalf of the Merlewood Angus Team (both two-legged and four-legged) we look forward to seeing you in the sales barn on Friday 23 March 2018 as 35 registered bulls go under the hammer at noon. With your help, it's sure to be a sensational second sale.

With warmest wishes
Anne Marie & Daniel

'CHEWING THE CUD'

A blog about all things farming and daily life on a black angus stud farm. A place where you can comment and share your stories, your views and your experiences on the topics that we write about each week.

Subscribe to Chewing the Cud and join the Cattle Conversation – the ultimate place for every farmer or fans of farming to BE.

We would love to Chew the Cud with you, so sign up now!

www.merlewoodangus.com.au/chewing-the-cud/



LUKE BUCHANAN
Farm Manager

"The one who falls and gets up, is so much stronger than the one that never fell."



WILLIE MILNE
Breed Consultant

"If you don't know the way, ask someone who has been down that road before."

BEEFCLASS STRUCTURAL ASSESSMENT

How to use:

The Beef Class Structural Assessment System uses a 1-9 scoring system for feet and leg structure:

- A score of 5 is ideal
- 4 and 6 show slight variation from ideal, but this includes most animals. Any animal scoring 4 and 6 would be acceptable in any breeding program
- 3 and 7 shows greater variation, but would be acceptable in most commercial breeding programs, however seedstock producers should be wary
- 2 and 8 are low scoring animals and should be looked at carefully before purchasing

A 1-5 scoring system is used for sheath attachment. For feet and leg assessment, animals need to be on a hard, flat and even surface where animal can move/stand naturally.

Traits:

	<i>Scoring Range</i>	<i>Description</i>
Front Feet Claw Set	1 - 9	1 - open divergent; 5 - good; 9 - extreme scissor claw
Rear Feet Claw Set	1 - 9	1 - open divergent; 5 - good; 9 - extreme scissor claw



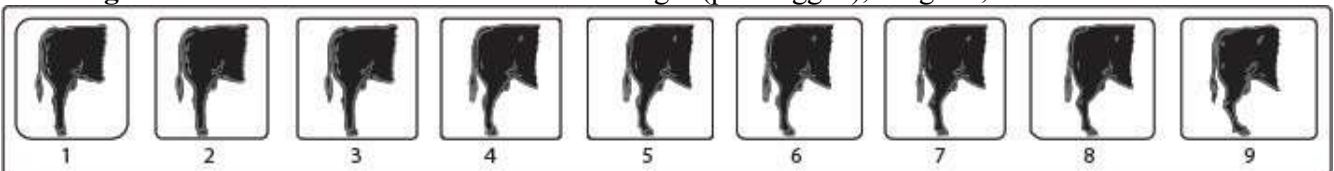
Reference: Shape (primarily curl) and evenness of the claw set.

Front Feet Angle	1 - 9	1 - steep (stubbed toe); 5 - good; 9 - shallow heel
Rear Feet Angle	1 - 9	1 - steep (stubbed toe); 5 - good; 9 - shallow heel



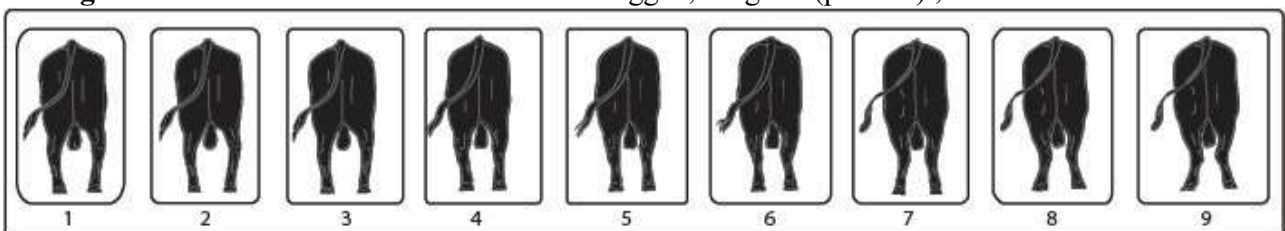
Reference: Strength of pastern, depth of heel and length of foot.

Rear Legs Side View	1 - 9	1 - straight (post legged); 5 - good; 9 - sickle hocked
----------------------------	-------	---



Reference: Angle measured at the front of the hock.

Rear Leg Hind View	1 - 9	1 - bow legged; 5 - good (parallel) ; 9 - cow hocked
---------------------------	-------	--



Reference: Direction of the feet when viewed from the rear.

Muscle Score:

A - E (includes + and -)

A+ = Double-muscled

A = Extremely heavy muscle

- pronounced creasing between muscles

B = Heavily muscled

- well rounded hindquarter

C = Average muscle

- hindquarter slightly rounded

D = Poor muscle

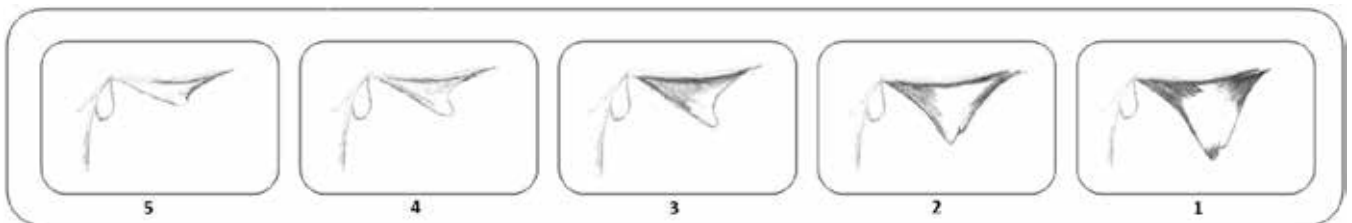
- narrow concave hindquarter

E = Extremely poor muscle

- angular

Reference: Primarily hindquarter roundness or convexity, width across the stifle and width of stance. Also width and muscle expression across the back, particularly behind the shoulder and in the loin. Jump muscle (about the P8 site) and forearm bulge may be taken into consideration.

Sheath and Naval Scores 5 - 1 5 - extremely clean/tight to body; 1 - extremely pendulous



Reference: Sheath attachment

Temperament

Reference: 1-5 (half scores permitted) using yard test scale below:

1. Docile
The animal is easily held in the corner and the handler can get close enough to put their stick on the animal.
2. Restless
The animal can be held in the corner but exhibits some restlessness and flicking of the tail. The handler cannot get close enough to put their stick on the animal before it moves away.
3. Nervous
The animal is not easily held in the corner even when the handler is some distance back from the animal, continual movement and tail flicking.
4. Flighty (wild)
The animal cannot be held in the corner, frantically runs the fence line and may jump when penned individually, exhibits long flight distance.
5. Aggressive
Similar behavior to score 4 but is also aggressive towards the handler, stares at the handler and threatens to charge or charges (Handler is advised to exit the yard before the animal actually charges).

FEBRUARY 2018 ANGUS BREEDPLAN REFERENCE TABLES



BREED AVERAGE EBVS

Brd Avg	Calving Ease					Birth					Growth					Fertility					Carcase					Other					Structure					Selection Indexes				
	CEDir	CEDtrs	GL	BW	200	400	600	MCW	Milk	SS	DTC	CWT	EMA	RIB	P8	RBV	IMF	NFI-P	NFI-F	DOC	FA	FC	RA	RH	RS	ABI	DOM	GRN	GRS											
+0.1	+0.3	-3.9	+4.3	+43	+80	+104	+90	+58	+1.8	-4.0	+58	+4.7	+0.0	-0.1	+0.3	+1.7	+0.10	+0.16	+4	-1	-2	-2	-0.1	-0.2	+1.10	+106	+115	+108												

* Breed average represents the average EBV of all 2016 drop Angus and Angus influenced animals analysed in the February 2018 TransTasman Angus BREEDPLAN genetic evaluation.

PERCENTILE BANDS TABLE

% Band	Calving Ease					Birth					Growth					Fertility					Carcase					Other					Structure					Selection Indexes				
	Less	Difficulty	Calving	Difficulty	Shorter	Longer	Lighter	Heavier	Lighter	Heavier	Lighter	Heavier	Lighter	Heavier	Lighter	Heavier	Lighter	Heavier	Lighter	Heavier	Lighter	Heavier	Lighter	Heavier	Lighter	Heavier	Lighter	Heavier	Lighter	Heavier										
1%	+5.2	+4.6	-9.5	+0.7	+59	+105	+141	+134	+3.7	-8.5	+83	+10.2	+2.9	+3.0	+2.4	+4.0	-0.34	-0.45	+32	+19	+22	+12	+3.2	+0.2	+151	+131	+176	+140												
5%	+4.0	+3.6	-7.5	+1.8	+54	+97	+129	+120	+3.1	-7.2	+76	+8.1	+1.9	+2.0	+1.7	+3.4	-0.23	-0.27	+24	+14	+16	+9	+2.3	+0.2	+140	+124	+159	+131												
10%	+3.3	+3.0	-6.6	+2.4	+52	+94	+123	+113	+2.8	-6.5	+72	+7.3	+1.4	+1.5	+1.4	+3.0	-0.16	-0.18	+19	+11	+13	+7	+2.0	+0.2	+134	+120	+149	+126												
15%	+2.8	+2.5	-6.0	+2.8	+50	+91	+120	+108	+2.5	-6.1	+70	+6.8	+1.1	+1.2	+1.2	+2.8	-0.11	-0.12	+16	+10	+11	+5	+1.5	+0.2	+129	+117	+143	+123												
20%	+2.4	+2.2	-5.6	+3.1	+49	+89	+117	+104	+2.4	-5.7	+68	+6.4	+0.9	+0.9	+1.0	+2.5	-0.07	-0.07	+14	+8	+9	+5	+1.2	+0.2	+126	+115	+138	+120												
25%	+2.0	+1.8	-5.2	+3.3	+48	+87	+114	+101	+2.3	-5.4	+66	+6.0	+0.7	+0.7	+0.9	+2.4	-0.04	-0.02	+12	+7	+7	+4	+1.0	+0.2	+123	+114	+133	+118												
30%	+1.7	+1.5	-4.9	+3.5	+47	+86	+112	+99	+2.1	-5.1	+65	+5.7	+0.5	+0.5	+0.7	+2.2	-0.01	+0.02	+10	+6	+6	+3	+0.7	+0.2	+120	+112	+129	+116												
35%	+1.3	+1.3	-4.6	+3.8	+46	+84	+110	+96	+2.0	-4.8	+63	+5.5	+0.4	+0.4	+0.6	+2.0	+0.02	+0.05	+8	+5	+4	+2	+0.5	+0.2	+118	+111	+126	+115												
40%	+1.0	+1.0	-4.3	+4.0	+46	+83	+108	+94	+1.9	-4.6	+62	+5.2	+0.2	+0.2	+0.5	+1.9	+0.05	+0.09	+7	+4	+3	+1	+0.3	+0.1	+116	+109	+122	+113												
45%	+0.7	+0.7	-4.1	+4.1	+45	+81	+106	+92	+1.8	-4.3	+61	+5.0	+0.1	+0.0	+0.4	+1.8	+0.08	+0.13	+5	+3	+2	+0	+0.2	+0.1	+114	+108	+119	+111												
50%	+0.4	+0.5	-3.8	+4.3	+44	+80	+104	+90	+1.7	-4.1	+59	+4.7	-0.1	-0.1	+0.3	+1.6	+0.10	+0.16	+4	+2	+1	-1	+0.0	+0.1	+112	+106	+116	+110												
55%	+0.0	+0.2	-3.6	+4.5	+43	+79	+103	+88	+1.7	-3.8	+58	+4.5	-0.2	-0.3	+0.2	+1.5	+0.13	+0.19	+3	+1	-1	-1	+0.0	+0.0	+109	+105	+113	+108												
60%	-0.3	-0.1	-3.3	+4.7	+42	+77	+101	+86	+1.6	-3.6	+56	+4.3	-0.3	-0.4	+0.1	+1.4	+0.15	+0.23	+1	-1	-3	-3	-0.2	+0.0	+107	+104	+109	+106												
65%	-0.7	-0.4	-3.1	+4.9	+41	+76	+99	+83	+1.5	-3.3	+55	+4.0	-0.5	-0.6	+0.0	+1.2	+0.18	+0.26	+0	-2	-5	-4	-0.4	-0.1	+105	+102	+106	+104												
70%	-1.0	-0.7	-2.8	+5.1	+40	+74	+96	+81	+1.4	-3.1	+53	+3.7	-0.6	-0.8	-0.1	+1.1	+0.20	+0.30	-2	-4	-8	-5	-0.6	-0.2	+102	+101	+102	+102												
75%	-1.5	-1.0	-2.6	+5.3	+39	+73	+94	+78	+1.3	-2.8	+51	+3.4	-0.8	-1.0	-0.2	+1.0	+0.23	+0.34	-4	-6	-11	-7	-0.9	-0.3	+100	+99	+98	+100												
80%	-2.0	-1.4	-2.2	+5.6	+38	+71	+91	+75	+1.1	-2.5	+49	+3.1	-1.0	-1.2	-0.4	+0.8	+0.26	+0.39	-5	-9	-13	-8	-1.2	-0.4	+96	+97	+93	+97												
85%	-2.6	-1.9	-1.9	+5.8	+36	+68	+88	+72	+1.0	-2.1	+46	+2.7	-1.2	-1.4	-0.6	+0.6	+0.30	+0.44	-7	-13	-16	-10	-1.6	-0.6	+92	+94	+87	+94												
90%	-3.4	-2.5	-1.4	+6.2	+34	+65	+84	+68	+0.8	-1.6	+41	+2.1	-1.4	-1.8	-0.8	+0.4	+0.34	+0.51	-10	-19	-21	-13	-2.3	-1.0	+87	+91	+80	+90												
95%	-4.7	-3.4	-0.6	+6.8	+31	+60	+77	+60	+0.5	-0.7	+34	+1.3	-1.8	-2.2	-1.1	+0.1	+0.42	+0.60	-13	-26	-27	-17	-3.4	-1.8	+77	+86	+66	+83												
99%	-7.6	-5.4	+1.2	+7.9	+23	+49	+59	+44	-0.1	+1.4	+23	-0.2	-2.6	-3.2	-1.8	-0.4	+0.55	+0.80	-19	-36	-38	-26	-6.5	-3.5	+48	+70	+25	+61												
	More	Difficulty	Longer	Heavier	Lighter	Lighter	Lighter	Lighter	Smaller	Longer	Lighter	Smaller	Less Fat	Less Fat	Lower	Less IMF	Lower	Efficiency	Less	Sound	Less	Sound	Less	Sound	Less	Sound	Lower	Profitability	Lower	Profitability										

* The percentile bands represent the distribution of EBVs across the 2016 drop Angus and Angus influenced animals analysed in the February 2018 TransTasman Angus BREEDPLAN genetic evaluation



Sale Lots

Lot 1

MERLEWOOD JARCEVO M89 (APR)

HODM89

DOB: 1/09/2016

Freeze Brand: Omega Symbol, M89 (F)

APR

TE MANIA AMBASSADOR A134 (AI)
TUWHARETOA REGENT D145 (AI) (ET)
LAWSONS HENRY VIII Y5 (AI)
Sire: VTMJ545 TE MANIA JARCEVO J545 (AI) (ET)
B T ULTRAVOX 297E
TE MANIA LOWAN Z74 (AI) (ET)
TE MANIA LOWAN V201 (AI) (ET)
SITZ NEW DESIGN 458N
MERLEWOOD SITZ 458 NEW DESIGN F4 (ET)
THE GRANGE YR BLACKBIRD C66 (AI) (ET)
Dam: HODH57 MERLEWOOD YTHANBRAE (APR)
LAWSONS GAR FAIR DINKUM Z197 (AI) (ET)
LAWSONS FAIR DINKUM B1173 (APR) (AI)
LAWSONS YIELD GRADE Z1086 (APR) (AI)

Traits Observed: 200WT,400WT(x2),SS,FAT,EMA,IMF

February 2018 Angus Australia BREEDPLAN table with columns for BIRTH and GROWTH.

FERTILITY, CARCASS, and OTHER data table.

Genetic Status: AMFU NHFU CAFU DD28%

Selection Indexes table with columns ABI, DOM, GRN, GRS.

Raw Structural Data table with columns FA, FC, RA, RC, RH, RS.

Purchaser:..... \$.....

Lot 2

MERLEWOOD HEIRLOOM M44

HODM44

DOB: 25/08/2016

Freeze Brand: Omega Symbol, M44 (F)

HBR

RENNYLEA C277 (AI) (ET)
IRELANDS FLETCHER F1
TE MANIA WARGOONA Z31 (AI)
Sire: VICH343 IRELANDS HEIRLOOM H343 (AI) (ET)
G A R GRID MAKER
IRELANDS ROSEBUD B12 (AI) (ET)
IMRAN ROSEBUD U17 (AI) (ET)
PINEBANK WAIG 31/95
PINEBANK WAIGROUP 41/97
PINEBANK 639/88
Dam: CMOA13 MOOD WOOD SONG A13 (AI)
MOOD WOOD MOODWOOD PROOF V2 (AI)
MOOD WOOD SONG Y31
MOOD WOOD SONG V39

Traits Observed: 200WT,400WT,SS,FAT,EMA,IMF

February 2018 Angus Australia BREEDPLAN table with columns for BIRTH and GROWTH.

FERTILITY, CARCASS, and OTHER data table.

Genetic Status: AMFU NHFU CAFU DDFU

Selection Indexes table with columns ABI, DOM, GRN, GRS.

Raw Structural Data table with columns FA, FC, RA, RC, RH, RS.

Purchaser:..... \$.....

Lot 3

MERLEWOOD HEIRLOOM M33

HODM33

DOB: 19/08/2016

Freeze Brand: Omega Symbol, M33 (F)

HBR

RENNYLEA C277 (AI) (ET)
IRELANDS FLETCHER F1
TE MANIA WARGOONA Z31 (AI)
Sire: VICH343 IRELANDS HEIRLOOM H343 (AI) (ET)
G A R GRID MAKER
IRELANDS ROSEBUD B12 (AI) (ET)
IMRAN ROSEBUD U17 (AI) (ET)
S A V 8180 TRAVELER 004
S A V INITIATIVE 4406
S A V MISS BOBBIE 0405
Dam: NFJE180 FORRES BURNETTE E180 (AI) (ET)
VERMILION YELLOWSTONE
FORRES BURNETTE Z8 (AI) (ET)
FORRES DORIS W204 (AI) (ET)

Traits Observed: 200WT,400WT(x2),SS,FAT,EMA,IMF

February 2018 Angus Australia BREEDPLAN table with columns for BIRTH and GROWTH.

FERTILITY, CARCASS, and OTHER data table.

Genetic Status: AMFU NHFU CAFU DDFU

Selection Indexes table with columns ABI, DOM, GRN, GRS.

Raw Structural Data table with columns FA, FC, RA, RC, RH, RS.

Purchaser:..... \$.....

FEBRUARY BREED AVERAGE EBV'S table with columns for various traits and their values.

Lot 4

MERLEWOOD HEIRLOOM M69

HODM69

DOB: 29/08/2016

Freeze Brand: Omega Symbol, M69 (F)

HBR

RENNYLEA C277 (AI) (ET)
 IRELANDS FLETCHER F1
 TE MANIA WARGOONA Z31 (AI)
Sire: VICH343 IRELANDS HEIRLOOM H343 (AI) (ET)
 G A R GRID MAKER
 IRELANDS ROSEBUD B12 (AI) (ET)
 IMRAN ROSEBUD U17 (AI) (ET)
 ARDROSSAN CONNECTION X15 (AI) (ET)
 FORRES CONNECTION B40 (AI) (ET)
 LOCHTON EQUATOR WILCOOLA Z83 (AI)
Dam: NFJD121 FORRES ROYAL-LINE D121
 BALDRIDGE NEBRASKA 901
 FORRES ROYAL-LINE B97 (AI) (ET)
 WAITARA TOOTSIE T1 (AI)

Traits Observed: 200WT,400WT(x2),SS,FAT,EMA,IMF

February 2018 Angus Australia BREEDPLAN										
Angus	BIRTH					GROWTH				
	Dir	Dtrs	GL	BWT	200	400	600	MCW	Milk	
EBV's	+1.4	+1.4	-4.2	+5.0	+50	+93	+119	+99	+15	
Acc	38%	33%	52%	58%	64%	66%	63%	57%	47%	
FERTILITY			CARCASS				OTHER			
SS	DTC	CWT	EMA	RIB	P8	RBY	IMF	NFI-P	NFI-F	
+2.0	-1.8	+70	+3.3	-2.0	-2.2	+0.9	+1.7	+0.00	-0.08	
69%	33%	54%	54%	54%	56%	50%	46%	38%	38%	

Genetic Status: AMFU NHFU CAFU DDFU

Selection Indexes			
ABI	DOM	GRN	GRS
\$112	\$113	\$117	\$112

Raw Structural Data							
FA	FC	RA	RC	RH	RS		
6	6	6	5	4	5	5	5

Purchaser:..... \$.....

Lot 5

MERLEWOOD HEIRLOOM M37

HODM37

DOB: 23/08/2016

Freeze Brand: Omega Symbol, M37 (F)

HBR

RENNYLEA C277 (AI) (ET)
 IRELANDS FLETCHER F1
 TE MANIA WARGOONA Z31 (AI)
Sire: VICH343 IRELANDS HEIRLOOM H343 (AI) (ET)
 G A R GRID MAKER
 IRELANDS ROSEBUD B12 (AI) (ET)
 IMRAN ROSEBUD U17 (AI) (ET)
 PINEBANK WAIG 31/95
 PINEBANK WAIGROUP 41/97
 PINEBANK 639/88
Dam: CMOA44 MOOD WOOD SONG A44 (AI)
 MOOD WOOD MOODWOOD PROOF V2 (AI)
 MOOD WOOD SONG Y21
 MOOD WOOD SONG V33

Traits Observed: 200WT,400WT(x2),SS,FAT,EMA,IMF

February 2018 Angus Australia BREEDPLAN										
Angus	BIRTH					GROWTH				
	Dir	Dtrs	GL	BWT	200	400	600	MCW	Milk	
EBV's	+0.4	+0.6	-3.3	+6.3	+48	+92	+115	+109	+12	
Acc	38%	33%	54%	57%	63%	65%	61%	54%	46%	
FERTILITY			CARCASS				OTHER			
SS	DTC	CWT	EMA	RIB	P8	RBY	IMF	NFI-P	NFI-F	
+1.0	-2.1	+59	+2.8	-2.2	-2.6	+1.1	+0.9	-0.17	-0.54	
68%	35%	53%	53%	53%	55%	49%	46%	38%	39%	

Genetic Status: AMFU NHFU CAFU DDFU

Selection Indexes			
ABI	DOM	GRN	GRS
\$100	\$106	\$99	\$102

Raw Structural Data							
FA	FC	RA	RC	RH	RS		
6	6	5	5	5	5	5	5

Purchaser:..... \$.....

Lot 6

MERLEWOOD JARCEVO M94 (APR)

HODM94

DOB: 3/09/2016

Freeze Brand: Omega Symbol, M94 (F)

APR

TE MANIA AMBASSADOR A134 (AI)
 TUWHARETOA REGENT D145 (AI) (ET)
 LAWSONS HENRY VIII Y5 (AI)
Sire: VTMJ545 TE MANIA JARCEVO J545 (AI) (ET)
 B T ULTRAVOX 297E
 TE MANIA LOWAN Z74 (AI) (ET)
 TE MANIA LOWAN V201 (AI) (ET)
 S A F STRATEGY 9015
 MERLEWOOD SAF STRATEGY F34 (AI)
 LAWSONS GAR NEW DESIGN 1407 (AI) (ET)
Dam: HODH71 MERLEWOOD YTHANBRAE (APR)
 G A R PREDESTINED
 MERLEWOOD PREDESTINED F17 (APR) (AI)
 LAWSONS FAIR DINKUM B1173 (APR) (AI)

Traits Observed: 200WT,400WT(x2),SS,FAT,EMA,IMF

February 2018 Angus Australia BREEDPLAN										
Angus	BIRTH					GROWTH				
	Dir	Dtrs	GL	BWT	200	400	600	MCW	Milk	
EBV's	+0.5	+0.1	-3.5	+3.4	+42	+75	+96	+72	+15	
Acc	39%	37%	52%	55%	63%	65%	61%	57%	48%	
FERTILITY			CARCASS				OTHER			
SS	DTC	CWT	EMA	RIB	P8	RBY	IMF	NFI-P	NFI-F	
+1.7	-6.2	+59	+5.3	+1.5	+0.8	-0.3	+3.0	+0.25	+0.43	
68%	38%	55%	52%	52%	54%	49%	47%	41%	42%	

Genetic Status: AMFU NH25% CAFU DD20%

Selection Indexes			
ABI	DOM	GRN	GRS
\$119	\$110	\$131	\$112

Raw Structural Data							
FA	FC	RA	RC	RH	RS		
5	6	5	7	5	5	5	5

Purchaser:..... \$.....

FEBRUARY BREED AVERAGE EBV'S																												
Dir	Dtrs	GL	BW	200	400	600	MCW	Milk	SS	DTC	CWT	EMA	RIB	P8	RBY	IMF	NFI-P	NFI-F	Doc	FA	FC	RA	RH	RS	ABI	DOM	GRN	GRS
+0.1	+0.3	-3.9	+4.3	+43	+80	+104	+90	+15	+1.8	-4.0	+58	+4.7	+0.0	-0.1	+0.3	+1.7	+0.10	+0.16	+4	-1	-2	-2	-0.1	-0.2	+110	+106	+115	+108

ARE YOUR STOCK REACHING THEIR FULL POTENTIAL?

CONSIDER MEGATRACE

Lack of Production, Poor Performance, and Health Constraints can often be attributed to missing nutrients.

MegaTrace is a concentrated and chelated trace mineral supplement suitable for all livestock. This complete all-in-one balanced liquid mineral package is a unique formulation of organically protected bio-available minerals in a seaweed base. Trials have shown that can MegaTrace can substantially improve the general health of your livestock

See us at the Merlewood Bull Sale, Mirboo North ...or call now for free information.

STOCKHEALTH
PRODUCTS AUSTRALIA

FREECALL 1800 255 288

sales@stockhealth.com.au www.stockhealth.com.au

MegaTrace



Pasture Genetics
Science based seed®

- PASTURES FOR THE AUSTRALIAN FARMER -

pasturegenetics.com



OUTBACK FORAGE OATS

Avena sativa	E, L, GA
Maturity	Mid-Late
Min Rainfall (mm)	400
SEEDING RATE	kg/ha
Dryland	30 - 50
High Rainfall/Irrigation	50 - 80

- Outback Forage Oats are an excellent early plant option throughout many areas where late autumn and early winter feed is critical.
- Medium height, erect specialist hay and grazing oat.
- High forage quality and total yield.
- Dark green broad leaves.
- Excellent seedling vigour results in rapid plant establishment.
- Better moisture stress tolerance.
- Suited to a wide range of soil types.
- Excellent frost tolerance.



L56 LUCERNE

Semi-winter dormant Medicago sativa	E, GLX
Winter Activity	5
Min Rainfall (mm)	350
SEEDING RATE	kg/ha
Dryland	4 - 8
High Rainfall/Irrigation	10 - 20
Hay Production	25 - 30

- The master dual purpose grazing and hay lucerne in Australia.
- Exceptional seedling vigour.
- Very high yields.
- Exceptional forage quality.
- New industry benchmark for persistence.
- Flexible management option.
- Highest levels of pest and disease resistance of any lucerne variety in Australia. Phytophthora Root Rot rating of HR+.
- Semi-winter dormant.
- Adaptable across a wide range of soil types.
- Very good grazing tolerance.

L56 LUCERNE MEETS TARGET WEIGHTS

Four years ago, Daniel and Anne-Marie Barrow from Merlewood Angus wanted to establish a high quality lucerne paddock on their South Gippsland property.

The aim was to push their rising Angus bulls to their target weight prior to their annual bull sale through grazing, silage and hay options. Understanding the challenges of South Gippsland

weather, Daniel and Anne-Marie were seeking a semi-winter dormant variety of lucerne.

They chose Pasture Genetics' L56 Lucerne, as it has the highest pest and disease resistance rating on the market, allowing it to persist for longer in the wetter environment. It also has a high leaf to stem ratio providing a high quality forage option.

With the cutting window for L56 Lucerne being much longer than other winter active varieties, Daniel and Anne-Marie could wait for ideal cutting weather without losing quality.

After utilising L56 Lucerne on their property for the past four years, the Barrow's are wanting to push the stand a bit harder this season.

Daniel and Anne-Marie have decided to oversow the paddock with Pasture Genetics' Outback Forage Oats to achieve a high quality and high yielding fodder crop for spring.

The extra fodder produced will help them to achieve their target weights earlier, and will take pressure off the rest of the farm at the same time.

E = L = GLX = GA =

FOR FURTHER TECHNICAL INFORMATION
Tim Francis 0419 995 416 tim.francis@pasturegenetics.com

14-16 Hakkinen Road, Wingfield, SA 5013 • T 08 8445 1111 • F 08 8445 7777 • seed@pasturegenetics.com • • pasturegenetics.com

Lot 7

MERLEWOOD KINGDOM M90 (AI)

HODM90

DOB: 1/09/2016

Freeze Brand: Omega Symbol, M90 (F)

HBR

WAITARA VALLEY TEX
 HINGAIA 469 (AI)
 HINGAIA 910
Sire: NMMK35 MILLAH MURRAH KINGDOM (AI) (ET)
 BT RIGHT TIME 24J
 MILLAH MURRAH FLOWER G41 (AI)
 MILLAH MURRAH FLOWER C15 (AI)
 SITZ NEW DESIGN 458N
 MERLEWOOD SITZ 458 NEW DESIGN F4 (ET)
 THE GRANGE YR BLACKBIRD C66 (AI) (ET)
Dam: HODH73 MERLEWOOD ROYAL-LINE H73
 B T ULTRAVOX 297E
 FORRES ROYAL-LINE C14 (AI) (ET)
 WAITARA TOOTSIE T1 (AI)

Traits Observed: 200WT,400WT(x2),SS,FAT,EMA,IMF

February 2018 Angus Australia BREEDPLAN									
Angus	BIRTH					GROWTH			
	Dir	Dtrs	GL	BWT	200	400	600	MCW	Milk
EBV's	-6.5	-3.1	-2.7	+6.7	+49	+87	+119	+108	+12
Acc	47%	38%	64%	64%	67%	69%	64%	59%	47%

FERTILITY			CARCASE				OTHER		
SS	DTC	CWT	EMA	RIB	P8	RBY	IMF	NFI-P	NFI-F
+1.6	-3.5	+58	+6.7	-0.1	+0.0	+1.2	+0.6	-0.19	-0.18
72%	39%	56%	58%	58%	59%	53%	54%	44%	46%

Genetic Status: AMFU NHFU CAFU DD25%

Selection Indexes			
ABI	DOM	GRN	GRS
\$97	\$94	\$91	\$101

Raw Structural Data						
FA	FC	RA	RC	RH	RS	
5	6	5	5	4	5	5

Purchaser:..... \$.....

Lot 8

MERLEWOOD JINDRA M11

HODM11

DOB: 30/07/2016

Freeze Brand: Omega Symbol, M11 (F)

HBR

TUWHARETOA REGENT D145 (AI) (ET)
 TE MANIA GENERAL G429 (AI)
 TE MANIA DANDLOO Z811 (AI)
Sire: VTMJ1153 TE MANIA JINDRA J1153
 TE MANIA AFRICA A217 (AI)
 TE MANIA JEDDA F786 (ACR)
 TE MANIA JEDDA B958 (ACR) (AI) (ET)
 KAROO W109 DIRECTION Z181
 CARABAR DOCKLANDS D62 (AI)
 CARABAR BLACKCAP MARY B12 (AI) (ET)
Dam: HODK11 MERLEWOOD BEEAC K11 (AI)
 LAWSONS INVINCIBLE C402 (AI)
 MERLEWOOD BEEAC F16 (AI)
 TE MANIA BEEAC A29 (AI)

Traits Observed: 200WT,400WT(x2),SS,FAT,EMA,IMF

February 2018 Angus Australia BREEDPLAN									
Angus	BIRTH					GROWTH			
	Dir	Dtrs	GL	BWT	200	400	600	MCW	Milk
EBV's	+1.0	+0.3	-6.5	+2.9	+39	+67	+91	+69	+19
Acc	41%	38%	59%	56%	63%	66%	62%	56%	46%

FERTILITY			CARCASE				OTHER		
SS	DTC	CWT	EMA	RIB	P8	RBY	IMF	NFI-P	NFI-F
+3.4	-6.6	+40	+5.3	+1.2	+2.3	-0.5	+2.9	+0.38	+0.57
70%	37%	56%	55%	54%	57%	51%	49%	42%	43%

Genetic Status: AMFU NHFU CAFU DD2%

Selection Indexes			
ABI	DOM	GRN	GRS
\$116	\$103	\$124	\$110

Raw Structural Data						
FA	FC	RA	RC	RH	RS	
5	5	5	5	5	5	5

Purchaser:..... \$.....

Lot 9

MERLEWOOD HEIRLOOM M116

HODM116

DOB: 8/09/2016

Freeze Brand: Omega Symbol, M116 (F)

HBR

RENNYLEA C277 (AI) (ET)
 IRELANDS FLETCHER F1
 TE MANIA WARGOONA Z31 (AI)
Sire: VICH343 IRELANDS HEIRLOOM H343 (AI) (ET)
 G A R GRID MAKER
 IRELANDS ROSEBUD B12 (AI) (ET)
 IMRAN ROSEBUD U17 (AI) (ET)
 B/R NEW DESIGN 036
 G A R PREDESTINED
 G A R EXT 4206
Dam: HODE6 MERLEWOOD GAR PREDESTINED (AI)
 G A R YIELD GRADE
 LAWSONS YIELD GRADE Z900 (AI)
 LAWSONS PAYLOAD X1409 (AI)

Traits Observed: 200WT,400WT(x2),SS,FAT,EMA,IMF

February 2018 Angus Australia BREEDPLAN									
Angus	BIRTH					GROWTH			
	Dir	Dtrs	GL	BWT	200	400	600	MCW	Milk
EBV's	-1.0	-0.2	-3.1	+5.7	+50	+93	+117	+100	+12
Acc	42%	37%	54%	57%	65%	67%	64%	58%	48%

FERTILITY			CARCASE				OTHER		
SS	DTC	CWT	EMA	RIB	P8	RBY	IMF	NFI-P	NFI-F
+1.5	-3.7	+71	+6.2	-1.9	-2.2	+1.0	+2.2	+0.09	+0.03
70%	38%	56%	55%	55%	57%	51%	49%	42%	43%

Genetic Status: AMFU NHFU CAFU DD28%

Selection Indexes			
ABI	DOM	GRN	GRS
\$121	\$116	\$132	\$116

Raw Structural Data						
FA	FC	RA	RC	RH	RS	
5	6	5	5	5	5	5

Purchaser:..... \$.....

FEBRUARY BREED AVERAGE EBV'S																												
Dir	Dtrs	GL	BW	200	400	600	MCW	Milk	SS	DTC	CWT	EMA	RIB	P8	RBY	IMF	NFI-P	NFI-F	Doc	FA	FC	RA	RH	RS	ABI	DOM	GRN	GRS
+0.1	+0.3	-3.9	+4.3	+4.3	+8.0	+10.4	+9.0	+1.5	+1.8	-4.0	+5.8	+4.7	+0.0	-0.1	+0.3	+1.7	+0.10	+0.16	+4	-1	-2	-2	-0.1	-0.2	+110	+106	+115	+108



Sale Lots

Lot 10

MERLEWOOD HEIRLOOM M32

HODM32

DOB: 19/08/2016

Freeze Brand: Omega Symbol, M32 (F)

HBR

RENNYLEA C277 (AI) (ET)
IRELANDS FLETCHER F1
TE MANIA WARGOONA Z31 (AI)
Sire: VICH343 IRELANDS HEIRLOOM H343 (AI) (ET)
G A R GRID MAKER
IRELANDS ROSEBUD B12 (AI) (ET)
IMRAN ROSEBUD U17 (AI) (ET)

Dam: NFJC59 FORRES ROYAL-LINE C59

VERMILION YELLOWSTONE
FORRES ROYAL-LINE A26 (AI) (ET)
WAITARA TOOTSIE T1 (AI)

Traits Observed: 200WT,400WT(x2),SS,FAT,EMA,IMF

February 2018 Angus Australia BREEDPLAN table with columns for BIRTH and GROWTH, including EBV's and Acc values.

FERTILITY, CARCASS, and OTHER data table with columns for SS, DTC, CWT, EMA, RIB, P8, RBY, IMF, NFI-P, NFI-F.

Genetic Status: AMFU NHFU CAFU DD13%

Selection Indexes table with columns ABI, DOM, GRN, GRS and values \$116, \$109, \$129, \$112.

Raw Structural Data table with columns FA, FC, RA, RC, RH, RS and values 5, 6, 5, 5, 4, 5, 5.

Purchaser:..... \$.....

Lot 11

MERLEWOOD JARCEVO M77 (APR)

HODM77

DOB: 30/08/2016

Freeze Brand: Omega Symbol, M77 (F)

APR

TE MANIA AMBASSADOR A134 (AI)
TUWHARETOA REGENT D145 (AI) (ET)
LAWSONS HENRY VIII Y5 (AI)
Sire: VTMJ545 TE MANIA JARCEVO J545 (AI) (ET)
B T ULTRAVOX 297E
TE MANIA LOWAN Z74 (AI) (ET)
TE MANIA LOWAN V201 (AI) (ET)

Dam: VCCG643 COOLANA G643 (APR) (AI)

LAWSONS DINKY-DI Z191 (AI) (ET)
COOLANA E656 (APR) (AI)
COOLANA Y331 (APR) (AI) (ET)

Traits Observed: 200WT,400WT(x2),SS,FAT,EMA,IMF

February 2018 Angus Australia BREEDPLAN table with columns for BIRTH and GROWTH, including EBV's and Acc values.

FERTILITY, CARCASS, and OTHER data table with columns for SS, DTC, CWT, EMA, RIB, P8, RBY, IMF, NFI-P, NFI-F.

Genetic Status: AMFU NHFU CAFU DD25%

Selection Indexes table with columns ABI, DOM, GRN, GRS and values \$131, \$114, \$151, \$121.

Raw Structural Data table with columns FA, FC, RA, RC, RH, RS and values 5, 6, 5, 6, 5, 5, 4.

Purchaser:..... \$.....

Lot 12

MERLEWOOD HEIRLOOM M75

HODM75

DOB: 30/08/2016

Freeze Brand: Omega Symbol, M75 (F)

HBR

RENNYLEA C277 (AI) (ET)
IRELANDS FLETCHER F1
TE MANIA WARGOONA Z31 (AI)
Sire: VICH343 IRELANDS HEIRLOOM H343 (AI) (ET)
G A R GRID MAKER
IRELANDS ROSEBUD B12 (AI) (ET)
IMRAN ROSEBUD U17 (AI) (ET)

Dam: VLYA717 LAWSONS GAR NEW DESIGN 1407 (AI) (ET)

G A R PRECISION 1680
G A R PRECISION A261
G A R EXT 1264

Traits Observed: 200WT,400WT(x2),SS,FAT,EMA,IMF

February 2018 Angus Australia BREEDPLAN table with columns for BIRTH and GROWTH, including EBV's and Acc values.

FERTILITY, CARCASS, and OTHER data table with columns for SS, DTC, CWT, EMA, RIB, P8, RBY, IMF, NFI-P, NFI-F.

Genetic Status: AMFU NH50% CAFU DD25%

Selection Indexes table with columns ABI, DOM, GRN, GRS and values \$133, \$121, \$147, \$126.

Raw Structural Data table with columns FA, FC, RA, RC, RH, RS and values 6, 6, 6, 6, 5, 5, 5.

Purchaser:..... \$.....

FEBRUARY BREED AVERAGE EBV'S table with columns for various traits and their average values.

Lot 13

MERLEWOOD HEIRLOOM M156

HODM156

DOB: 29/09/2016

Freeze Brand: Omega Symbol, M156 (F)

HBR

RENNYLEA C277 (AI) (ET)
 IRELANDS FLETCHER F1
 TE MANIA WARGOONA Z31 (AI)
Sire: VICH343 IRELANDS HEIRLOOM H343 (AI) (ET)
 G A R GRID MAKER
 IRELANDS ROSEBUD B12 (AI) (ET)
 IMRAN ROSEBUD U17 (AI) (ET)
 B/R NEW DESIGN 036
 BON VIEW NEW DESIGN 1407
 BON VIEW PRIDE 664
Dam: HODF15 MERLEWOOD HENRY VIII F15 (AI)
 YTHANBRAE HENRY VIII U8 (AI) (ET)
 LAWSONS HENRY VIII Z757 (AI)
 YTHANBRAE TRUE BLUE N33 U142 (AI)

Traits Observed: 200WT,400WT(x2),SS,FAT,EMA,IMF

February 2018 Angus Australia BREEDPLAN									
Angus	BIRTH					GROWTH			
	Dir	Dtrs	GL	BWT	200	400	600	MCW	Milk
EBV's	+0.3	+0.2	-3.2	+5.5	+52	+97	+125	+105	+15
Acc	42%	38%	58%	57%	65%	67%	63%	58%	49%

FERTILITY			CARCASS				OTHER		
SS	DTC	CWT	EMA	RIB	P8	RBY	IMF	NFI-P	NFI-F
+1.2	-3.5	+72	+4.0	-2.0	-2.2	+0.5	+2.2	-0.03	-0.37
67%	39%	56%	54%	54%	56%	51%	48%	42%	43%

Genetic Status: AMFU NHFU CAFU DD75%

Selection Indexes			
ABI	DOM	GRN	GRS
\$123	\$116	\$135	\$118

Raw Structural Data							
FA	FC	RA	RC	RH	RS		
6	5	6	5	6	5	5	

Purchaser:..... \$.....

Lot 14

MERLEWOOD HEIRLOOM M96

HODM96

DOB: 3/09/2016

Freeze Brand: Omega Symbol, M96 (F)

HBR

RENNYLEA C277 (AI) (ET)
 IRELANDS FLETCHER F1
 TE MANIA WARGOONA Z31 (AI)
Sire: VICH343 IRELANDS HEIRLOOM H343 (AI) (ET)
 G A R GRID MAKER
 IRELANDS ROSEBUD B12 (AI) (ET)
 IMRAN ROSEBUD U17 (AI) (ET)
 S A F FOCUS OF E R
 TE MANIA YORKSHIRE Y437 (AI)
 TE MANIA LOWAN U275 (AI) (ET)
Dam: HODE22 MERLEWOOD YORKSHIRE E22 (AI)
 LAWSONS GAR FAIR DINKUM Z197 (AI) (ET)
 LAWSONS FAIR DINKUM B1163 (AI)
 LAWSONS NEW DESIGN 1407 Z1082 (AI)

Traits Observed: 200WT,400WT(x2),SS,FAT,EMA,IMF

February 2018 Angus Australia BREEDPLAN									
Angus	BIRTH					GROWTH			
	Dir	Dtrs	GL	BWT	200	400	600	MCW	Milk
EBV's	+2.3	+2.8	-5.5	+4.9	+53	+100	+133	+115	+15
Acc	41%	37%	57%	58%	65%	67%	64%	59%	50%

FERTILITY			CARCASS				OTHER		
SS	DTC	CWT	EMA	RIB	P8	RBY	IMF	NFI-P	NFI-F
+1.8	-4.2	+77	+4.3	-2.6	-3.0	+1.0	+2.2	+0.13	-0.02
70%	37%	56%	55%	54%	56%	51%	48%	41%	42%

Genetic Status: AMFU NHFU CAFU DD31%

Selection Indexes			
ABI	DOM	GRN	GRS
\$139	\$125	\$156	\$131

Raw Structural Data							
FA	FC	RA	RC	RH	RS		
5	6	5	5	4	5	5	

Purchaser:..... \$.....

Lot 15

MERLEWOOD KINGDOM M29 (AI)

HODM29

DOB: 22/08/2016

Freeze Brand: Omega Symbol, M29 (F)

HBR

WAITARA VALLEY TEX
 HINGAIA 469 (AI)
 HINGAIA 910
Sire: NMMK35 MILLAH MURRAH KINGDOM (AI) (ET)
 BT RIGHT TIME 24J
 MILLAH MURRAH FLOWER G41 (AI)
 MILLAH MURRAH FLOWER C15 (AI)
 CONNEALY PRODUCT 568
 CONNEALY FINAL PRODUCT
 EBONISTA OF CONANGA 471
Dam: HODJ35 MERLEWOOD BLACKBIRD J35 (AI)
 VERMILION YELLOWSTONE
 MERLEWOOD GAR BLACKBIRD E28 (AI) (ET)
 BLACK LABEL NEW DIRECTION (AI) (ET)

Traits Observed: 200WT,400WT(x2),SS,FAT,EMA,IMF

February 2018 Angus Australia BREEDPLAN									
Angus	BIRTH					GROWTH			
	Dir	Dtrs	GL	BWT	200	400	600	MCW	Milk
EBV's	-5.6	-0.6	-4.4	+7.5	+57	+99	+133	+124	+9
Acc	49%	39%	68%	64%	67%	68%	64%	59%	47%

FERTILITY			CARCASS				OTHER		
SS	DTC	CWT	EMA	RIB	P8	RBY	IMF	NFI-P	NFI-F
+0.1	-4.0	+71	+9.1	-0.9	-1.3	+1.7	+0.3	-0.08	-0.19
72%	38%	56%	59%	58%	59%	54%	54%	44%	45%

Genetic Status: AMFU NHFU CAFU DDFU

Selection Indexes			
ABI	DOM	GRN	GRS
\$113	\$107	\$109	\$116

Raw Structural Data							
FA	FC	RA	RC	RH	RS		
5	6	5	6	5	5	5	

Purchaser:..... \$.....

FEBRUARY BREED AVERAGE EBV'S																												
Dir	Dtrs	GL	BW	200	400	600	MCW	Milk	SS	DTC	CWT	EMA	RIB	P8	RBY	IMF	NFI-P	NFI-F	Doc	FA	FC	RA	RH	RS	ABI	DOM	GRN	GRS
+0.1	+0.3	-3.9	+4.3	+4.3	+8.0	+10.4	+9.0	+1.5	+1.8	-4.0	+5.8	+4.7	+0.0	-0.1	+0.3	+1.7	+0.10	+0.16	+4	-1	-2	-2	-0.1	-0.2	+110	+106	+115	+108

BROWNS STOCK FEED PTY. LTD.

LEONGATHA - 86 Yarragon Rd

Phone: 03 5662 3199

Email: admin@brownssf.com.au

TINAMBA - 620 Heyfield Upper Maffra Rd

Phone: 03 5145 1345

Email: tinamba@brownssf.com.au

www.brownstockfeed.com.au

Locally Owned



Tinamba Mill



Leongatha Mill

FOR ALL YOUR DAIRY, BEEF & CALF FEED REQUIREMENTS

NIR - State of the Art Testing - for Feed & Fodder

On Farm

In Store

We Supply

- Whole and Rolled Grain
- Custom Dairy Mix
- Dairy Pellets
- Varieties of Hay in Bulk
- High Energy and Protein Mixes
- Calf & Heifer Grain Mixes & Pellets
- Silage, Hay Wraps & Twine
- Drenches & Vaccines
- Animal Health
- Fencing Materials
- Fodder Crop & Pasture Seeds
- All your Farming Requirements

BULK ↔ BULKA BAGS ↔ 20KG BAGS

Free Delivery in Gippsland

Gippsland



Chris Lawton

Ph: 0439 959 899

Gippsland



Matt James

Ph: 0488 623 159

South & West Gippsland



Lindsay Davies

Ph: 0428 361 231

Call one of our nutritional team direct or contact the office to have one of our nutritional team contact you to discuss further

'MEALS ON WHEELS FOR YOUR FARM'

Lot 16

MERLEWOOD HEIRLOOM M87

HODM87

DOB: 1/09/2016

Freeze Brand: Omega Symbol, M87 (F)

HBR

RENNYLEA C277 (AI) (ET)
 IRELANDS FLETCHER F1
 TE MANIA WARGOONA Z31 (AI)
Sire: VICH343 IRELANDS HEIRLOOM H343 (AI) (ET)
 G A R GRID MAKER
 IRELANDS ROSEBUD B12 (AI) (ET)
 IMRAN ROSEBUD U17 (AI) (ET)
 LEACHMAN RIGHT TIME
 LEACHMAN BOOM TIME
 LEACHMAN BURGESS 5004
Dam: HODE16 MERLEWOOD SUNBEAM E16 (AI) (ET)
 TE MANIA XPO X84 (AI) (ET)
 STRATHEWEN XPO SUNBEAM B26 (AI) (ET)
 STRATHEWEN NEW DIMENSION SUNBEAM Z19 (AI) (ET)

Traits Observed: 200WT,400WT(x2),SS,FAT,EMA,IMF

February 2018 Angus Australia BREEDPLAN									
BIRTH					GROWTH				
Dir	Dtrs	GL	BWT	200	400	600	MCW	Milk	
EBV's	-1.6	-0.5	-2.7	+5.4	+51	+93	+123	+111	+15
Acc	41%	37%	51%	57%	64%	66%	63%	58%	48%
FERTILITY			CARCASS				OTHER		
SS	DTC	CWT	EMA	RIB	P8	RBY	IMF	NFI-P	NFI-F
+2.3	-3.1	+71	+3.7	-1.0	-1.0	+0.3	+1.7	+0.03	-0.11
70%	37%	56%	54%	54%	56%	50%	48%	41%	42%

Genetic Status: AMFU NH50% CAFU DD12%

Selection Indexes			
ABI	DOM	GRN	GRS
\$110	\$105	\$114	\$109

Raw Structural Data							
FA	FC	RA	RC	RH	RS		
5	6	5	6	5	5	5	

Purchaser:..... \$.....

Lot 17

MERLEWOOD HIERARCHY M25 (AI)

HODM25

DOB: 21/08/2016

Freeze Brand: Omega Symbol, M25 (F)

HBR

BOOROOMOOKA UNDERTAKEN Y145
 RENNYLEA EDMUND E11 (AI) (ET)
 LAWSONS HENRY VIII Y5 (AI)
Sire: VICH152 IRELANDS HIERARCHY H152 (AI)
 TE MANIA AMBASSADOR A134 (AI)
 IRELANDS WARGOONA E5 (AI) (ET)
 TE MANIA WARGOONA Z31 (AI)
 PAPA EQUATOR 2928
 ARDROSSAN EQUATOR A241 (AI) (ET)
 ARDROSSAN PRINCESS W38 (AI) (ET)
Dam: HODJ65 MERLEWOOD BURNETTE (AI) (ET)
 KENNY'S CREEK ECLIPSE W111 (AI) (ET)
 FORRES BURNETTE Z36 (AI)
 FORRES BURNETTE M40+92 (AI)

Traits Observed: 200WT,400WT(x2),SS,FAT,EMA,IMF

February 2018 Angus Australia BREEDPLAN									
BIRTH					GROWTH				
Dir	Dtrs	GL	BWT	200	400	600	MCW	Milk	
EBV's	+1.8	+0.4	-4.4	+3.0	+42	+79	+100	+82	+20
Acc	48%	41%	63%	63%	66%	68%	65%	59%	48%
FERTILITY			CARCASS				OTHER		
SS	DTC	CWT	EMA	RIB	P8	RBY	IMF	NFI-P	NFI-F
+1.6	-5.7	+65	+5.9	+0.4	-0.1	+0.7	+2.0	+0.23	+0.34
72%	42%	57%	58%	58%	59%	54%	52%	46%	47%

Genetic Status: AMFU NHFU CAFU DD25%

Selection Indexes			
ABI	DOM	GRN	GRS
\$117	\$112	\$123	\$113

Raw Structural Data							
FA	FC	RA	RC	RH	RS		
6	5	6	5	5	5	5	

Purchaser:..... \$.....

Lot 18

MERLEWOOD HEIRLOOM M124

HODM124

DOB: 14/09/2016

Freeze Brand: Omega Symbol, M124 (F)

HBR

RENNYLEA C277 (AI) (ET)
 IRELANDS FLETCHER F1
 TE MANIA WARGOONA Z31 (AI)
Sire: VICH343 IRELANDS HEIRLOOM H343 (AI) (ET)
 G A R GRID MAKER
 IRELANDS ROSEBUD B12 (AI) (ET)
 IMRAN ROSEBUD U17 (AI) (ET)
 O S U 6T6 ULTRA
 B T ULTRAVOX 297E
 FINKS VIXON 788
Dam: NFJC14 FORRES ROYAL-LINE C14 (AI) (ET)
 V D A R NEW TREND 315
 WAITARA TOOTSIE T1 (AI)
 ROYAL-LINE DANDLOO N32+93

Traits Observed: 200WT,400WT(x2),SS,FAT,EMA,IMF

February 2018 Angus Australia BREEDPLAN									
BIRTH					GROWTH				
Dir	Dtrs	GL	BWT	200	400	600	MCW	Milk	
EBV's	-1.2	-3.2	-3.9	+6.0	+51	+93	+121	+111	+13
Acc	43%	39%	53%	59%	65%	67%	63%	57%	50%
FERTILITY			CARCASS				OTHER		
SS	DTC	CWT	EMA	RIB	P8	RBY	IMF	NFI-P	NFI-F
+2.0	-1.9	+67	+3.1	-1.7	-1.5	+0.8	+1.7	-0.09	-0.25
70%	39%	56%	55%	55%	57%	52%	49%	42%	43%

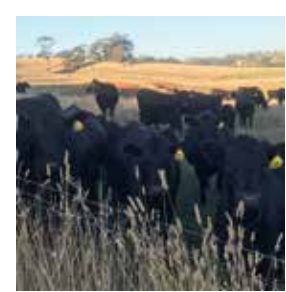
Genetic Status: AMFU NHFU CAFU DDFU

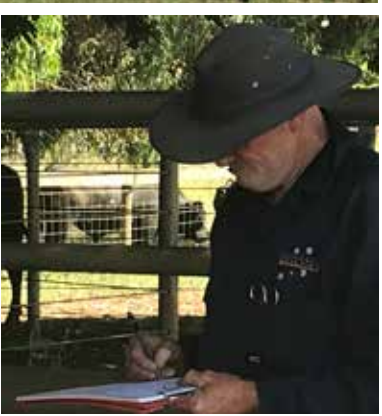
Selection Indexes			
ABI	DOM	GRN	GRS
\$105	\$105	\$110	\$105

Raw Structural Data							
FA	FC	RA	RC	RH	RS		
5	5	5	5	5	5	5	

Purchaser:..... \$.....

FEBRUARY BREED AVERAGE EBV'S																												
Dir	Dtrs	GL	BW	200	400	600	MCW	Milk	SS	DTC	CWT	EMA	RIB	P8	RBY	IMF	NFI-P	NFI-F	Doc	FA	FC	RA	RH	RS	ABI	DOM	GRN	GRS
+0.1	+0.3	-3.9	+4.3	+43	+80	+104	+90	+15	+1.8	-4.0	+58	+4.7	+0.0	-0.1	+0.3	+1.7	+0.10	+0.16	+4	-1	-2	-2	-0.1	-0.2	+110	+106	+115	+108







Sale Lots

Lot 19

MERLEWOOD KINGDOM M81 (AI)

HODM81

DOB: 31/08/2016

Freeze Brand: Omega Symbol, M81 (F)

HBR

WAITARA VALLEY TEX
HINGAIA 469 (AI)
HINGAIA 910
Sire: NMMK35 MILLAH MURRAH KINGDOM (AI) (ET)
BT RIGHT TIME 24J
MILLAH MURRAH FLOWER G41 (AI)
MILLAH MURRAH FLOWER C15 (AI)

Sire: NMMK35 MILLAH MURRAH KINGDOM (AI) (ET)

Dam: HODG14 MERLEWOOD BEEAC G14 (AI) (ET)

B/R NEW DESIGN 036
TE MANIA BEEAC U340 (AI) (ET)
TE MANIA BEEAC R342 (AI) (ET)

Traits Observed: 200WT,400WT(x2),SS,FAT,EMA,IMF

February 2018 Angus Australia BREEDPLAN table with columns for BIRTH and GROWTH.

FERTILITY, CARCASS, and OTHER data table.

Genetic Status: AMFU NHFU CAFU DDFU

Selection Indexes table with columns ABI, DOM, GRN, GRS.

Raw Structural Data table with columns FA, FC, RA, RC, RH, RS.

Purchaser:..... \$.....

Lot 20

MERLEWOOD EMPEROR M133

HODM133

DOB: 17/09/2016

Freeze Brand: Omega Symbol, M133 (F)

HBR

TE MANIA BERKLEY B1 (AI)
TE MANIA EMPEROR E343 (AI)
TE MANIA LOWAN Z74 (AI) (ET)
Sire: HODH43 MERLEWOOD EMPEROR H43 (AI)
MYTTY IN FOCUS
THE GRANGE BLACKBIRD B149 (AI) (ET)
H C C ROCKN BLACKBIRD 133 (ET)

Sire: HODH43 MERLEWOOD EMPEROR H43 (AI)

Dam: HODH47 MERLEWOOD WILCOOLA (AI) (ET)

ARDROSSAN JACKSON J6+89 (AI) (ET)
ARDROSSAN WILCOOLA Q6
ARDROSSAN M30+92 (AI)

Traits Observed: 200WT,400WT(x2),SS,FAT,EMA,IMF

February 2018 Angus Australia BREEDPLAN table with columns for BIRTH and GROWTH.

FERTILITY, CARCASS, and OTHER data table.

Genetic Status: AMFU NHFU CAFU DDFU

Selection Indexes table with columns ABI, DOM, GRN, GRS.

Raw Structural Data table with columns FA, FC, RA, RC, RH, RS.

Purchaser:..... \$.....

Lot 21

MERLEWOOD JARCEVO M62

HODM62

DOB: 28/08/2016

Freeze Brand: Omega Symbol, M62 (F)

HBR

TE MANIA AMBASSADOR A134 (AI)
TUWHARETOA REGENT D145 (AI) (ET)
LAWSONS HENRY VIII Y5 (AI)
Sire: VTMJ545 TE MANIA JARCEVO J545 (AI) (ET)
B T ULTRAVOX 297E
TE MANIA LOWAN Z74 (AI) (ET)
TE MANIA LOWAN V201 (AI) (ET)

Sire: VTMJ545 TE MANIA JARCEVO J545 (AI) (ET)

Dam: HODH40 MERLEWOOD WILCOOLA H40

B/R NEW FRONTIER 095
MERLEWOOD WILCOOLA F28 (AI) (ET)
ALPINE WILCOOLA Z11

Traits Observed: 200WT,400WT(x2),SS,FAT,EMA,IMF

February 2018 Angus Australia BREEDPLAN table with columns for BIRTH and GROWTH.

FERTILITY, CARCASS, and OTHER data table.

Genetic Status: AMFU NH25% CAFU DD6%

Selection Indexes table with columns ABI, DOM, GRN, GRS.

Raw Structural Data table with columns FA, FC, RA, RC, RH, RS.

Purchaser:..... \$.....

FEBRUARY BREED AVERAGE EBV'S table with columns for various traits and their average values.

Lot 22

MERLEWOOD HEIRARCHY M54 (AI)

HODM54

DOB: 26/08/2016

Freeze Brand: Omega Symbol, M54 (F)

HBR

BOOROOMOOKA UNDERTAKEN Y145
 RENNYLEA EDMUND E11 (AI) (ET)
 LAWSONS HENRY VIII Y5 (AI)
Sire: VICH152 IRELANDS HIERARCHY H152 (AI)
 TE MANIA AMBASSADOR A134 (AI)
 IRELANDS WARGOONA E5 (AI) (ET)
 TE MANIA WARGOONA Z31 (AI)
 SITZ NEW DESIGN 458N
 MERLEWOOD SITZ 458 NEW DESIGN F4 (ET)
 THE GRANGE YR BLACKBIRD C66 (AI) (ET)
Dam: HODH63 MERLEWOOD ROYAL-LINE H63
 FORRES ND 036 A111 (AI) (ET)
 FORRES ROYAL-LINE C59
 FORRES ROYAL-LINE A26 (AI) (ET)

Traits Observed: 200WT,400WT(x2),SS,FAT,EMA,IMF

February 2018 Angus Australia BREEDPLAN									
Angus	BIRTH					GROWTH			
	Dir	Dtrs	GL	BWT	200	400	600	MCW	Milk
EBV's	+1.3	-0.2	-4.3	+3.6	+44	+81	+106	+87	+17
Acc	44%	36%	60%	61%	65%	67%	64%	59%	46%

FERTILITY			CARCASS				OTHER		
SS	DTC	CWT	EMA	RIB	P8	RBY	IMF	NFI-P	NFI-F
+2.8	-5.2	+62	+5.3	+0.9	+0.6	+0.4	+2.3	+0.20	+0.36
71%	36%	56%	56%	56%	57%	51%	49%	41%	43%

Genetic Status: AMFU NHFU CAFU DD31%

Selection Indexes			
ABI	DOM	GRN	GRS
\$121	\$112	\$130	\$116

Raw Structural Data						
FA	FC	RA	RC	RH	RS	
7	6	6	6	5	5	5

Purchaser:..... \$.....

Lot 23

MERLEWOOD JARCEVO M127

HODM127

DOB: 15/09/2016

Freeze Brand: Omega Symbol, M127 (F)

HBR

TE MANIA AMBASSADOR A134 (AI)
 TUWHARETOA REGENT D145 (AI) (ET)
 LAWSONS HENRY VIII Y5 (AI)
Sire: VTMJ545 TE MANIA JARCEVO J545 (AI) (ET)
 B T ULTRAVOX 297E
 TE MANIA LOWAN Z74 (AI) (ET)
 TE MANIA LOWAN V201 (AI) (ET)
 PAPA EQUATOR 2928
 ARDROSSAN EQUATOR A241 (AI) (ET)
 ARDROSSAN PRINCESS W38 (AI) (ET)
Dam: HODH27 MERLEWOOD BURNETTE H27 (AI)
 GARDENS HIGHMARK
 FORRES BURNETTE D119 (AI) (ET)
 FORRES BURNETTE Z48 (AI) (ET)

Traits Observed: 200WT,400WT(x2),SS,FAT,EMA,IMF

February 2018 Angus Australia BREEDPLAN									
Angus	BIRTH					GROWTH			
	Dir	Dtrs	GL	BWT	200	400	600	MCW	Milk
EBV's	+0.1	-1.7	-5.5	+4.1	+45	+85	+114	+101	+18
Acc	44%	42%	59%	57%	63%	66%	62%	58%	48%

FERTILITY			CARCASS				OTHER		
SS	DTC	CWT	EMA	RIB	P8	RBY	IMF	NFI-P	NFI-F
+2.2	-5.2	+72	+4.5	+0.4	+0.2	-0.3	+3.0	+0.29	+0.45
69%	44%	56%	55%	55%	56%	52%	52%	46%	48%

Genetic Status: AMFU NHFU CAFU DDFU

Selection Indexes			
ABI	DOM	GRN	GRS
\$124	\$109	\$140	\$115

Raw Structural Data						
FA	FC	RA	RC	RH	RS	
5	5	5	5	5	5	4

Purchaser:..... \$.....

Lot 24

MERLEWOOD KINGDOM M61 (AI)

HODM61

DOB: 27/08/2016

Freeze Brand: Omega Symbol, M61 (F)

HBR

WAITARA VALLEY TEX
 HINGAIA 469 (AI)
 HINGAIA 910
Sire: NMMK35 MILLAH MURRAH KINGDOM (AI) (ET)
 BT RIGHT TIME 24J
 MILLAH MURRAH FLOWER G41 (AI)
 MILLAH MURRAH FLOWER C15 (AI)
 ROCKN D AMBUSH 1531
 B/R AMBUSH 28
 B/R RUBY OF TIFFANY 8250 (ET)
Dam: HODE2 MERLEWOOD B/R AMBUSH E2 (AI)
 BON VIEW NEW DESIGN 1407
 LAWSONS NEW DESIGN 1407 Z1140 (AI)
 LAWSONS FUTURE DIRECTION X1549 (AI)

Traits Observed: 200WT,400WT(x2),SS,FAT,EMA,IMF

February 2018 Angus Australia BREEDPLAN									
Angus	BIRTH					GROWTH			
	Dir	Dtrs	GL	BWT	200	400	600	MCW	Milk
EBV's	-4.7	+0.5	-3.6	+6.6	+49	+81	+113	+119	+8
Acc	51%	42%	67%	66%	68%	70%	66%	60%	51%

FERTILITY			CARCASS				OTHER		
SS	DTC	CWT	EMA	RIB	P8	RBY	IMF	NFI-P	NFI-F
-0.4	-5.3	+60	+8.2	-0.6	-0.4	+0.7	+1.0	-0.13	-0.27
73%	43%	58%	60%	60%	61%	56%	56%	47%	48%

Genetic Status: AMFU NHFU CAFU DD9%

Selection Indexes			
ABI	DOM	GRN	GRS
\$103	\$95	\$102	\$103

Raw Structural Data						
FA	FC	RA	RC	RH	RS	
7	6	6	5	5	6	4

Purchaser:..... \$.....

FEBRUARY BREED AVERAGE EBV'S																												
Dir	Dtrs	GL	BW	200	400	600	MCW	Milk	SS	DTC	CWT	EMA	RIB	P8	RBY	IMF	NFI-P	NFI-F	Doc	FA	FC	RA	RH	RS	ABI	DOM	GRN	GRS
+0.1	+0.3	-3.9	+4.3	+43	+80	+104	+90	+15	+1.8	-4.0	+58	+4.7	+0.0	-0.1	+0.3	+1.7	+0.10	+0.16	+4	-1	-2	-2	-0.1	-0.2	+110	+106	+115	+108



IMPORTANT NOTICES FOR PURCHASERS

~ SALE CATALOGUE DISCLAIMER ~

All reasonable care has been taken by the vendor to ensure that the information provided in this catalogue is correct at the time of publication. However, neither the vendor nor the selling agents make any other representations about the accuracy, reliability or completeness of any information provided in this catalogue and do not assume any responsibility for the use or interpretation of the information included in this catalogue. You are encouraged to seek independent verification of any information contained in this catalogue before relying on such information.

~ DNA PATERNITY VERIFICATION ~

It is a requirement of Angus Australia that all bulls used to sire calves for registration in the Angus Australia Herd Book Register, Red Angus Register or Angus Performance Register must have been DNA paternity verified if they are born in or after the 'Y' year (2003). Buyers intending to use bulls listed in this catalogue to produce calves to be registered in these registers should obtain DNA paternity verification on those bulls before they are used for breeding.

~ PRIVACY INFORMATION ~

In order for Angus Australia to process the transfer of a registered animal in this catalogue, the vendor will need to provide certain information to Angus Australia and the buyer consents to the collection and disclosure of that information by Angus Australia in certain circumstances. If the buyer does not wish for his or her information to be stored and disclosed by Angus Australia, the buyer must complete the form included below and forward it to Angus Australia. If the form is not completed, the buyer will be taken to have consented to the disclosure of such information.

BUYER'S OPTION TO OPT OUT OF DISCLOSING PERSONAL INFORMATION TO THE ANGUS AUSTRALIA

If you do not complete this form, you will be taken to have consented to Angus Australia using your name, address and phone number for the purposes of effecting a change of registration of the animal(s) that you have purchased, maintaining its databases and disclosing that information to its members on its website.

I, the buyer of animals with the following registration numbers from member (name) do not consent to Angus Australia using my name, address and phone number for the purposes of effecting a change of registration of the following animal(s) that I have purchased, maintaining its databases and disclosing that information to its members on its website.

Signature:

Date:

Please forward this completed consent form to Angus Australia, Glen Innes Road, Locked Bag 11, Armidale NSW 2350. If you have any queries, please telephone 02 6772 3011 or e-mail office@angusaustralia.com.au.

Lot 25

MERLEWOOD JARCEVO M73

HODM73

DOB: 29/08/2016

Freeze Brand: Omega Symbol, M73 (F)

HBR

TE MANIA AMBASSADOR A134 (AI)
TUWHARETOA REGENT D145 (AI) (ET)
LAWSONS HENRY VIII Y5 (AI)

Sire: VTMJ545 TE MANIA JARCEVO J545 (AI) (ET)

B T ULTRAVOX 297E
TE MANIA LOWAN Z74 (AI) (ET)
TE MANIA LOWAN V201 (AI) (ET)
HYLINE RIGHT TIME 338 (ET)
K C F BENNETT PERFORMER
K C F MISS 589 L182

Dam: HODJ46 MERLEWOOD BLACKBIRD J46 (AI)

TE MANIA ULONG U41 (AI) (ET)
MERLEWOOD BLACKBIRD F33 (AI)
THE GRANGE BLACKBIRD B149 (AI) (ET)

Traits Observed: 200WT,400WT(x2),SS,FAT,EMA,IMF

Angus	February 2018 Angus Australia BREEDPLAN									
	BIRTH					GROWTH				
	Dir	Dtrs	GL	BWT	200	400	600	MCW	Milk	
EBV's	-0.6	-1.2	-4.0	+4.7	+48	+87	+115	+95	+17	
Acc	43%	41%	59%	56%	63%	65%	62%	57%	48%	

FERTILITY			CARCASE				OTHER		
SS	DTC	CWT	EMA	RIB	P8	RBY	IMF	NFI-P	NFI-F
+1.7	-4.5	+66	+5.1	+0.9	+0.8	-0.2	+2.4	+0.15	+0.11
69%	42%	56%	54%	54%	56%	52%	51%	45%	46%

Genetic Status: AMFU NHFU CAFU DDFU

Selection Indexes			
ABI	DOM	GRN	GRS
\$119	\$108	\$127	\$115

Raw Structural Data							
FA	FC	RA	RC	RH	RS		
5	7	5	5	5	5	5	

Purchaser:..... \$.....

Lot 26

MERLEWOOD JARCEVO M112

HODM112

DOB: 7/09/2016

Freeze Brand: Omega Symbol, M112 (F)

HBR

TE MANIA AMBASSADOR A134 (AI)
TUWHARETOA REGENT D145 (AI) (ET)
LAWSONS HENRY VIII Y5 (AI)

Sire: VTMJ545 TE MANIA JARCEVO J545 (AI) (ET)

B T ULTRAVOX 297E
TE MANIA LOWAN Z74 (AI) (ET)
TE MANIA LOWAN V201 (AI) (ET)
GARDENS HIGHMARK
FORRES HIGHMARK D76 (AI) (ET)
YTHANBRAE NEW DESIGN 036 V56 (AI) (ET)

Dam: HODG54 MERLEWOOD BURNETTE G54

S A V INITIATIVE 4406
FORRES BURNETTE E180 (AI) (ET)
FORRES BURNETTE Z8 (AI) (ET)

Traits Observed: 200WT,400WT(x2),SS,FAT,EMA,IMF

Angus	February 2018 Angus Australia BREEDPLAN									
	BIRTH					GROWTH				
	Dir	Dtrs	GL	BWT	200	400	600	MCW	Milk	
EBV's	-0.1	-2.1	-4.4	+3.6	+37	+62	+86	+72	+13	
Acc	39%	37%	49%	55%	62%	65%	61%	56%	48%	

FERTILITY			CARCASE				OTHER		
SS	DTC	CWT	EMA	RIB	P8	RBY	IMF	NFI-P	NFI-F
+1.2	-5.3	+52	+6.2	+1.1	+0.5	-0.1	+2.4	+0.23	+0.53
68%	38%	54%	52%	51%	53%	48%	46%	40%	41%

Genetic Status: AMFU NHFU CAFU DDFU

Selection Indexes			
ABI	DOM	GRN	GRS
\$100	\$93	\$104	\$97

Raw Structural Data							
FA	FC	RA	RC	RH	RS		
6	5	6	5	4	5	4	

Purchaser:..... \$.....

Lot 27

MERLEWOOD V A R RESERVE M108 (AI)

HODM108

DOB: 6/09/2016

Freeze Brand: Omega Symbol, M108 (F)

HBR

BOYD NEW DAY 8005
B/R NEW DAY 454
B/R RUBY 1224

Sire: USA16916944 V A R RESERVE 1111 (ET)

CONNEALY ONWARD
SANDPOINT BLACKBIRD 8809
RIVERBEND BLACKBIRD 4301
B/R NEW DESIGN 036
B/R NEW FRONTIER 095
WHITE FENCE PRIDE H1

Dam: HODF41 MERLEWOOD WILCOOLA (AI) (ET)

ARDROSSAN SCOTCH CAP V026 (AI)
ALPINE WILCOOLA Z11
ARDROSSAN WILCOOLA Q6

Traits Observed: 200WT,400WT(x2),SS,FAT,EMA,IMF

Angus	February 2018 Angus Australia BREEDPLAN									
	BIRTH					GROWTH				
	Dir	Dtrs	GL	BWT	200	400	600	MCW	Milk	
EBV's	+2.1	+0.0	-2.0	+4.7	+45	+78	+106	+91	+12	
Acc	54%	49%	65%	65%	68%	70%	68%	63%	58%	

FERTILITY			CARCASE				OTHER		
SS	DTC	CWT	EMA	RIB	P8	RBY	IMF	NFI-P	NFI-F
+2.1	-3.0	+56	+5.3	-2.5	-2.8	+1.6	+1.8	+0.03	+0.14
73%	41%	61%	61%	60%	61%	57%	57%	46%	48%

Genetic Status: AMFU NHFU CAFU DDFU

Selection Indexes			
ABI	DOM	GRN	GRS
\$112	\$109	\$119	\$109

Raw Structural Data							
FA	FC	RA	RC	RH	RS		
6	5	6	5	6	5	5	

Purchaser:..... \$.....

FEBRUARY BREED AVERAGE EBV'S																												
Dir	Dtrs	GL	BW	200	400	600	MCW	Milk	SS	DTC	CWT	EMA	RIB	P8	RBY	IMF	NFI-P	NFI-F	Doc	FA	FC	RA	RH	RS	ABI	DOM	GRN	GRS
+0.1	+0.3	-3.9	+4.3	+43	+80	+104	+90	+15	+1.8	-4.0	+58	+4.7	+0.0	-0.1	+0.3	+1.7	+0.10	+0.16	+4	-1	-2	-2	-0.1	-0.2	+110	+106	+115	+108

The Farming & Grazing for ProfitTM school

COMING TO

VICTORIA!

BALLARAT | AUGUST 15 - 21, 2018

Learn the skills to unlock potential, remove barriers and drive your farm business forward. Attend Australia's only true whole-of-business school for the agricultural industry and enhance every aspect of your property and life.

Over 6.5 intensive days you'll focus on:

- Land
- Production
- Soil health
- Business
- People management
- Planning

Take advantage of the Farming & Grazing for Profit School while it's in your area. More info on our website:

www.rcsaustralia.com.au

I think the grass is greener on that side of the fence!

I bet they've done the Farming & Grazing for Profit School!

Free KIT Field Days:

- Lower Marshes, TAS - April 12
- Stockyard Hill, VIC - April 14
- Beachport, SA - April 16

Everyone welcome. RSVP via phone, email or website.

Visit our website for a full list of upcoming events and subscribe to our newsletter to get the latest info delivered straight to your inbox!

Phone
Visit
Email
Follow

1800 356 004

www.rcsaustralia.com.au

info@rcsaustralia.com.au



Empowering People

Discover the **Bio-Boost** benefits that no other fertiliser can offer!

Specially formulated for low Calcium/Magnesium soils to increase leaf size and productivity.

Calcium has long been recognized as an important soil amendment. Using a highly soluble source of calcium like Cal/Mag5:1 can:

- quickly remove harmful sodium salts from the root zone
- establish valuable calcium, magnesium and nitrogen levels
- provide proper nutrition for rapid recovery and vegetative regrowth.

Low Magnesium soils produce weak plants with small leaves, By applying the highly concentrated multi-purpose Cal/Mag 5:1 at only 5 ltrs/Ha, the leaf size and productivity will increase.



Ca:10.5, Mg:2.1, Liquid Sea Minerals + Boron, Molybdenum, Molasses + Seaweed + Silica



For more information visit gfssolutions.com.au or call (03) 5153 0277

Need top nutrition for optimum production?

See us at the Merlewood Bull Sale Mirboo North!

Bio-Boost delivers systemic NPK & Trace Elements economically!

Bio-Boost NPK Foliage Spray is high in energy, with premium levels of Phosphorous, Nitrogen, Potassium and trace elements for good pasture or crop nutrition. Within seconds of application the spray starts to work systemically, helping to correct deficiencies and improve the health of pasture.

- Reduces the need for supplements

- Helps with weight gain and productivity. **Bio-Boost NPK Foliage Spray** travels down into the roots to compensate soil 'lock-up' and deficiencies in pasture and crops. An excellent natural agent for fast pasture recovery.

Composition: Nitrogen 22.5%, Phosphorus 5.85%, Potassium 9.01%, with trace elements.



Call (03) 5153 0277 for more info or visit gfssolutions.com.au



Sale Lots

Lot 28 **MERLEWOOD V A R RESERVE M65 (AI)** HODM65

DOB: 28/08/2016 **Freeze Brand:** Omega Symbol, M65 (F) **HBR**

BOYD NEW DAY 8005
B/R NEW DAY 454
B/R RUBY 1224

Sire: USA16916944 V A R RESERVE 1111 (ET)

CONNEALY ONWARD
SANDPOINT BLACKBIRD 8809
RIVERBEND BLACKBIRD 4301
C R A BEXTOR 872 5205 608
TC ABERDEEN 759
TC BLACKBIRD 4034

Dam: HODH1 MERLEWOOD WILCOOLA H1 (AI)

TE MANIA UNLIMITED U3271 (AI) (ET)
MERLEWOOD WILCOOLA F29 (AI) (ET)
ARDROSSAN WILCOOLA U20 (AI) (ET)

Traits Observed: 200WT,400WT(x2),SS,FAT,EMA,IMF

Angus	February 2018 Angus Australia BREEDPLAN									
	BIRTH					GROWTH				
	Dir	Dtrs	GL	BWT	200	400	600	MCW	Milk	
EBV's	+2.2	+0.7	-4.8	+2.8	+42	+78	+103	+83	+16	
Acc	53%	48%	69%	65%	68%	69%	67%	63%	57%	

FERTILITY				CARCASS				OTHER	
SS	DTC	CWT	EMA	RIB	P8	RBV	IMF	NFI-P	NFI-F
+1.4	-2.4	+52	+7.2	-1.7	-2.2	+1.6	+1.8	+0.04	+0.30
73%	39%	60%	61%	60%	61%	56%	57%	46%	48%

Genetic Status: AMFU NHFU CAFU DD13%

Selection Indexes			
ABI	DOM	GRN	GRS
\$112	\$111	\$117	\$111

Raw Structural Data							
FA	FC	RA	RC	RH	RS		
6	6	5	5	5	5	5	

Purchaser:..... \$.....

Lot 29 **MERLEWOOD V A R RESERVE M68 (AI)** HODM68

DOB: 29/08/2016 **Freeze Brand:** Omega Symbol, M68 (F) **HBR**

BOYD NEW DAY 8005
B/R NEW DAY 454
B/R RUBY 1224

Sire: USA16916944 V A R RESERVE 1111 (ET)

CONNEALY ONWARD
SANDPOINT BLACKBIRD 8809
RIVERBEND BLACKBIRD 4301
TE MANIA ALONZO A678 (AI)
MERLEWOOD ALONZO E19
TE MANIA BEEAC A29 (AI)

Dam: HODG37 MERLEWOOD B/R AMBUSH G37

B/R AMBUSH 28
MERLEWOOD B/R AMBUSH E2 (AI)
LAWSON'S NEW DESIGN 1407 Z1140 (AI)

Traits Observed: 200WT,400WT(x2),SS,FAT,EMA,IMF

Angus	February 2018 Angus Australia BREEDPLAN									
	BIRTH					GROWTH				
	Dir	Dtrs	GL	BWT	200	400	600	MCW	Milk	
EBV's	+1.8	+0.0	-4.4	+3.2	+42	+73	+96	+86	+14	
Acc	49%	44%	64%	63%	67%	68%	66%	62%	54%	

FERTILITY				CARCASS				OTHER	
SS	DTC	CWT	EMA	RIB	P8	RBV	IMF	NFI-P	NFI-F
+0.8	-4.0	+52	+6.4	-1.3	-1.4	+1.0	+2.0	+0.02	+0.19
72%	35%	58%	58%	58%	58%	53%	54%	42%	44%

Genetic Status: AMFU NHFU CAFU DD7%

Selection Indexes			
ABI	DOM	GRN	GRS
\$108	\$106	\$113	\$105

Raw Structural Data							
FA	FC	RA	RC	RH	RS		
5	6	5	5	5	6	5	

Purchaser:..... \$.....

Lot 30 **MERLEWOOD JARCEVO M139** HODM139

DOB: 19/09/2016 **Freeze Brand:** Omega Symbol, M139 (F) **HBR**

TE MANIA AMBASSADOR A134 (AI)
TUWHARETOA REGENT D145 (AI) (ET)
LAWSON'S HENRY VIII Y5 (AI)

Sire: VTMJ545 TE MANIA JARCEVO J545 (AI) (ET)

B T ULTRAVOX 297E
TE MANIA LOWAN Z74 (AI) (ET)
TE MANIA LOWAN V201 (AI) (ET)
BON VIEW NEW DESIGN 1407
SITZ NEW DESIGN 458N
SITZ ELLUNAS ELITE 3308

Dam: HODH16 MERLEWOOD BURNETTE (AI) (ET)

KENNY'S CREEK ECLIPSE W111 (AI) (ET)
FORRES BURNETTE Z36 (AI)
FORRES BURNETTE M40+92 (AI)

Traits Observed: 200WT,400WT(x2),SS,FAT,EMA,IMF

Angus	February 2018 Angus Australia BREEDPLAN									
	BIRTH					GROWTH				
	Dir	Dtrs	GL	BWT	200	400	600	MCW	Milk	
EBV's	-1.4	-1.6	-2.4	+4.4	+42	+80	+104	+84	+19	
Acc	44%	42%	54%	57%	64%	66%	63%	58%	50%	

FERTILITY				CARCASS				OTHER	
SS	DTC	CWT	EMA	RIB	P8	RBV	IMF	NFI-P	NFI-F
+2.4	-5.2	+62	+3.9	+1.0	+1.0	-0.5	+2.7	+0.25	+0.29
69%	44%	57%	55%	55%	56%	52%	51%	45%	47%

Genetic Status: AMFU NHFU CAFU DD50%

Selection Indexes			
ABI	DOM	GRN	GRS
\$111	\$102	\$121	\$106

Raw Structural Data							
FA	FC	RA	RC	RH	RS		
7	7	7	7	5	5	5	

Purchaser:..... \$.....

FEBRUARY BREED AVERAGE EBV'S																												
Dir	Dtrs	GL	BW	200	400	600	MCW	Milk	SS	DTC	CWT	EMA	RIB	P8	RBV	IMF	NFI-P	NFI-F	Doc	FA	FC	RA	RH	RS	ABI	DOM	GRN	GRS
+0.1	+0.3	-3.9	+4.3	+4.3	+80	+104	+90	+15	+1.8	-4.0	+58	+4.7	+0.0	-0.1	+0.3	+1.7	+0.10	+0.16	+4	-1	-2	-2	-0.1	-0.2	+110	+106	+115	+108

Lot 31

MERLEWOOD EMPEROR M161

HODM161

DOB: 6/10/2016

Freeze Brand: Omega Symbol, M161 (F)

HBR

TE MANIA BERKLEY B1 (AI)
 TE MANIA EMPEROR E343 (AI)
 TE MANIA LOWAN Z74 (AI) (ET)
Sire: HODH43 MERLEWOOD EMPEROR H43 (AI)
 MYTTY IN FOCUS
 THE GRANGE BLACKBIRD B149 (AI) (ET)
 H C C ROCKN BLACKBIRD 133 (ET)
 BON VIEW NEW DESIGN 1407
 SITZ NEW DESIGN 458N
 SITZ ELLUNAS ELITE 3308
Dam: HODG22 MERLEWOOD ALISON G22 (AI)
 BT EQUATOR 395M
 THE GRANGE ALISON D185 (AI) (ET)
 THE GRANGE ALISON A43 (AI) (ET)

Traits Observed: 200WT,400WT(x2),SS,FAT,EMA,IMF

Angus	February 2018 Angus Australia BREEDPLAN									
	BIRTH					GROWTH				
	Dir	Dtrs	GL	BWT	200	400	600	MCW	Milk	
EBV's	+0.8	+3.0	-4.0	+3.7	+47	+87	+114	+104	+14	
Acc	42%	40%	58%	55%	64%	66%	63%	58%	49%	

FERTILITY			CARCASS				OTHER		
SS	DTC	CWT	EMA	RIB	P8	RBY	IMF	NFI-P	NFI-F
+2.8	-6.3	+65	+4.9	+0.1	-0.1	+0.2	+2.2	+0.15	+0.18
66%	40%	56%	53%	53%	55%	50%	50%	43%	45%

Genetic Status: AMFU NHFU CAFU DD25%

Selection Indexes			
ABI	DOM	GRN	GRS
\$128	\$116	\$140	\$122

Raw Structural Data							
FA	FC	RA	RC	RH	RS	Image	
5	6	5	6	4	5	5	

Purchaser:..... \$.....

Lot 32

MERLEWOOD JARCEVO M128

HODM128

DOB: 15/09/2016

Freeze Brand: Omega Symbol, M128 (F)

HBR

TE MANIA AMBASSADOR A134 (AI)
 TUWHARETOA REGENT D145 (AI) (ET)
 LAWSONS HENRY VIII Y5 (AI)
Sire: VTMJ545 TE MANIA JARCEVO J545 (AI) (ET)
 B T ULTRAVOX 297E
 TE MANIA LOWAN Z74 (AI) (ET)
 TE MANIA LOWAN V201 (AI) (ET)
 TE MANIA UNLIMITED U3271 (AI) (ET)
 MERLEWOOD UNLIMITED F30 (AI) (ET)
 ARDROSSAN WILCOOLA U20 (AI) (ET)
Dam: HODJ24 MERLEWOOD TRUE BLUE J24
 YTHANBRAE HENRY VIII U8 (AI) (ET)
 LAWSONS HENRY VIII Z757 (AI)
 YTHANBRAE TRUE BLUE N33 U142 (AI)

Traits Observed: 200WT,400WT(x2),SS,FAT,EMA,IMF

Angus	February 2018 Angus Australia BREEDPLAN									
	BIRTH					GROWTH				
	Dir	Dtrs	GL	BWT	200	400	600	MCW	Milk	
EBV's	-1.4	-3.3	-2.4	+4.6	+42	+78	+105	+94	+17	
Acc	41%	39%	53%	56%	64%	66%	63%	58%	48%	

FERTILITY			CARCASS				OTHER		
SS	DTC	CWT	EMA	RIB	P8	RBY	IMF	NFI-P	NFI-F
+2.8	-5.6	+59	+4.0	+1.2	+0.6	-0.5	+3.0	+0.29	+0.44
69%	41%	56%	53%	53%	55%	50%	48%	43%	44%

Genetic Status: AMFU NHFU CAFU DD50%

Selection Indexes			
ABI	DOM	GRN	GRS
\$113	\$100	\$127	\$105

Raw Structural Data							
FA	FC	RA	RC	RH	RS	Image	
5	6	5	6	4	5	4	

Purchaser:..... \$.....

Lot 33

MERLEWOOD HEIRLOOM M118

HODM118

DOB: 9/09/2016

Freeze Brand: Omega Symbol, M118 (F)

HBR

RENNYLEA C277 (AI) (ET)
 IRELANDS FLETCHER F1
 TE MANIA WARGOONA Z31 (AI)
Sire: VICH343 IRELANDS HEIRLOOM H343 (AI) (ET)
 G A R GRID MAKER
 IRELANDS ROSEBUD B12 (AI) (ET)
 IMRAN ROSEBUD U17 (AI) (ET)
 BALDRIDGE KABOOM K243 KCF
 CONNEALY THUNDER
 PARKA OF CONANGA 241
Dam: HODE2 MERLEWOOD BLACKBIRD F2 (ET)
 B/R NEW DIMENSION 7127
 THE GRANGE YR BLACKBIRD A207 (AI) (ET)
 DAVIS YR BLACKBIRD 558H

Traits Observed: 200WT,400WT(x2),SS,FAT,EMA,IMF

Angus	February 2018 Angus Australia BREEDPLAN									
	BIRTH					GROWTH				
	Dir	Dtrs	GL	BWT	200	400	600	MCW	Milk	
EBV's	-0.5	+1.0	-3.3	+4.9	+48	+90	+117	+94	+13	
Acc	41%	36%	50%	58%	65%	66%	63%	58%	48%	

FERTILITY			CARCASS				OTHER		
SS	DTC	CWT	EMA	RIB	P8	RBY	IMF	NFI-P	NFI-F
+1.7	-1.7	+70	+7.7	-2.1	-3.2	+1.8	+1.6	+0.06	+0.08
70%	35%	56%	55%	54%	56%	51%	48%	40%	41%

Genetic Status: AMFU NH25% CAFU DD25%

Selection Indexes			
ABI	DOM	GRN	GRS
\$116	\$114	\$122	\$115

Raw Structural Data							
FA	FC	RA	RC	RH	RS	Image	
6	6	6	6	5	5	5	

Purchaser:..... \$.....

FEBRUARY BREED AVERAGE EBV'S																												
Dir	Dtrs	GL	BW	200	400	600	MCW	Milk	SS	DTC	CWT	EMA	RIB	P8	RBY	IMF	NFI-P	NFI-F	Doc	FA	FC	RA	RH	RS	ABI	DOM	GRN	GRS
+0.1	+0.3	-3.9	+4.3	+4.3	+8.0	+10.4	+9.0	+1.5	+1.8	-4.0	+5.8	+4.7	+0.0	-0.1	+0.3	+1.7	+0.10	+0.16	+4	-1	-2	-2	-0.1	-0.2	+110	+106	+115	+108



Sale Lots

Lot 34

MERLEWOOD EMPEROR M144

HODM144

DOB: 20/09/2016

Freeze Brand: Omega Symbol, M144 (F)

HBR

TE MANIA BERKLEY B1 (AI)
 TE MANIA EMPEROR E343 (AI)
 TE MANIA LOWAN Z74 (AI) (ET)
Sire: HODH43 MERLEWOOD EMPEROR H43 (AI)
 MYTTY IN FOCUS
 THE GRANGE BLACKBIRD B149 (AI) (ET)
 H C C ROCKN BLACKBIRD 133 (ET)

Dam: NFJG14 FORRES BURNETTE G14

S A F 598 BANDO 5175
 BANQUET ABODE A005 (AI)
 BANQUET NANNY V44
 KENNY'S CREEK ECLIPSE W111 (AI) (ET)
 FORRES BURNETTE Z36 (AI)
 FORRES BURNETTE M40+92 (AI)

Traits Observed: 200WT,400WT(x2),SS,FAT,EMA,IMF

Angus	February 2018 Angus Australia BREEDPLAN									
	BIRTH					GROWTH				
	Dir	Dtrs	GL	BWT	200	400	600	MCW	Milk	
EBV's	+1.2	+2.2	-3.9	+3.9	+40	+71	+92	+84	+15	
Acc	40%	36%	57%	55%	64%	66%	63%	57%	48%	

FERTILITY			CARCASS				OTHER			
SS	DTC	CWT	EMA	RIB	P8	RBV	IMF	NFI-P	NFI-F	
+1.4	-6.0	+50	+3.0	+0.7	+0.6	+0.1	+1.3	+0.09	+0.05	
70%	37%	55%	53%	53%	55%	50%	47%	41%	42%	

Genetic Status: AMFU NHFU CAFU DD25%

Selection Indexes			
ABI	DOM	GRN	GRS
\$99	\$99	\$96	\$100

Raw Structural Data							
FA	FC	RA	RC	RH	RS		
5	6	5	5	5	5	5	

Purchaser:..... \$.....

Lot 35

MERLEWOOD EMPEROR M164

HODM164

DOB: 10/10/2016

Freeze Brand: Omega Symbol, M164 (F)

HBR

TE MANIA BERKLEY B1 (AI)
 TE MANIA EMPEROR E343 (AI)
 TE MANIA LOWAN Z74 (AI) (ET)
Sire: HODH43 MERLEWOOD EMPEROR H43 (AI)
 MYTTY IN FOCUS
 THE GRANGE BLACKBIRD B149 (AI) (ET)
 H C C ROCKN BLACKBIRD 133 (ET)

Dam: HODH45 MERLEWOOD YTHANBRAE H45 (AI)

LEACHMAN RIGHT TIME
 BT RIGHT TIME 24J
 SITZ EVERELDA ENTENSE 1905
 LAWSONS DINKY-DI Z191 (AI) (ET)
 MERLEWOOD DINKY-DI E7 (AI)
 LAWSONS HENRY VIII Z1302 (AI)

Traits Observed: 200WT,400WT(x2),SS,FAT,EMA,IMF

Angus	February 2018 Angus Australia BREEDPLAN									
	BIRTH					GROWTH				
	Dir	Dtrs	GL	BWT	200	400	600	MCW	Milk	
EBV's	+0.9	+1.0	-0.9	+4.2	+44	+80	+106	+87	+17	
Acc	42%	40%	63%	55%	63%	65%	62%	57%	47%	

FERTILITY			CARCASS				OTHER			
SS	DTC	CWT	EMA	RIB	P8	RBV	IMF	NFI-P	NFI-F	
+2.4	-5.7	+56	+3.0	-0.7	-0.8	+0.4	+1.9	-0.06	-0.15	
66%	40%	55%	53%	53%	54%	50%	49%	43%	45%	

Genetic Status: AMFU NHFU CAFU DD19%

Selection Indexes			
ABI	DOM	GRN	GRS
\$114	\$107	\$121	\$110

Raw Structural Data							
FA	FC	RA	RC	RH	RS		
5	6	5	7	4	5	4	

Purchaser:..... \$.....

FEBRUARY BREED AVERAGE EBV'S																												
Dir	Dtrs	GL	BW	200	400	600	MCW	Milk	SS	DTC	CWT	EMA	RIB	P8	RBV	IMF	NFI-P	NFI-F	Doc	FA	FC	RA	RH	RS	ABI	DOM	GRN	GRS
+0.1	+0.3	-3.9	+4.3	+43	+80	+104	+90	+15	+1.8	-4.0	+58	+4.7	+0.0	-0.1	+0.3	+1.7	+0.10	+0.16	+4	-1	-2	-2	-0.1	-0.2	+110	+106	+115	+108

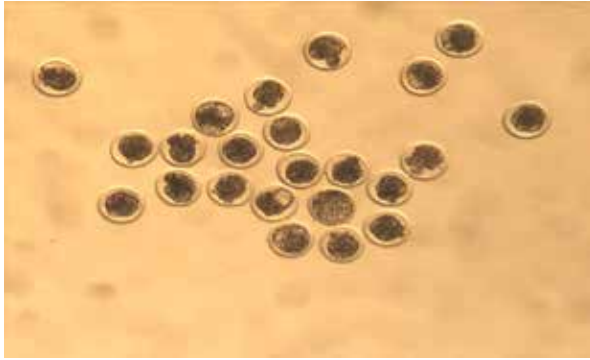


Born to breed
 For your next
 star sire, make
Merlewood
Angus your
 ultimate
 choice



VETERINARY EMBRYO TRANSFER SERVICES

- Providing bovine embryo collection, transfer and freezing services.
- Embryo splitting options.
- Donor and recipient management advice including programming and nutritional management.
- Manual and ultrasound pregnancy testing.
- Donor collection facilities in Leongatha South for domestic embryo collection.



Contact : Dr Doug Watson (0422452316) or email vetembryotransfer@gmail.com

“Breeding Quality from Head to Tail”



BRINGING YOUR NEW BULL HOME

WHEN PURCHASING A BULL, CARE AND HANDLING AFTER THE SALE CAN BE AS IMPORTANT AS THE PURCHASE ITSELF. LOOKING AFTER YOUR BULL WELL DURING THE INITIAL STAGES OF HIS WORKING LIFE MAY ENSURE LONGEVITY AND SUCCESS WITHIN YOUR BREEDING HERD.

PURCHASE

Temperament is an important characteristic when selecting a bull. Selecting a bull that may be flighty or aggressive will make life difficult for you each time he is handled. Note which bulls continually push to the centre of a mob, run around, or are unreasonably nervous, aggressive or excited.

At the sale, note any changes of temperament by individual bulls. Some bulls that are quiet in the yard or paddock may not like the pressure and noise of the auction and become excited. Others that were excited beforehand get much worse in the sale ring and can really perform. Use the yard or paddock behaviour as a guide, rather than the temperament shown in the ring.

DELIVERY

When transporting your new bull insurance against loss in transit, accidental loss of use, or infertility, is sometimes provided by vendors. Where it is not, it is worth considering. After purchase tips:

- When purchasing, ask which health treatments he has received.
- Treat and handle him quietly at all times - no dogs, no buzzers. Talk to him and give him time and room to make up his mind.
- With more than one bull from different origins, you must be able to separate them on the truck.
- Make sure that the truck floor is covered to prevent bulls from slipping. Sand, sawdust or a floor grid will prevent bulls from being damaged by going down in transit.
- If you can arrange it, put a few quiet cows or steers on the truck with the bull. Let them down into a yard with the bulls for a while before loading and after unloading.
- Unload and reload during the trip as little as possible. If necessary, rest with water and feed. Treat bulls kindly your impatience or nervousness is easily transmitted to an animal unfamiliar to you and unsure of his environment.

IF YOU USE A PROFESSIONAL CARRIER:

- Make sure the carrier knows which bulls can be mixed together.

- Discuss with the carrier, resting procedures for long trips, expected delivery time, truck condition and quiet handling.
- Give ear tag and brand numbers to the carrier and make sure you have the carrier's phone number.
- If buying bulls from interstate, organise any necessary health tests before leaving and work out if any other requirements must be met before cattle can come into another State.

When buying bulls from far away, you may often have to fit in with other delivery arrangements to reduce cost. You should make it clear how you want your bulls handled.

ARRIVAL

When the bull or bulls arrive home, unload them at the yards into a group of house cows, steers or herd cows. Never jump them from the back of a truck directly into a paddock—it may be the last time you see them. Bulls from different origins should be put into separate yards with other cattle for company.

Provide hay and water, then leave them alone until the next morning .

The next day, bulls should receive routine health treatments. If they have not been treated before, all bulls should be vaccinated with:

- 5-in-1 vaccine;
- vibriosis vaccine;
- leptospirosis vaccine (if in areas like the Hunter where leptospirosis exists);
- three-day sickness vaccine (if in areas where this sickness can cause problems).

Give particular attention to preventing new bulls bringing vibriosis into a herd. Vibriosis, a sexually transmitted disease, causes infertility and abortions and is most commonly introduced to a clean herd by an infected bull. These bulls show no signs of the illness. Vaccinated bulls are free from vibriosis, so vaccinating bulls against the disease should be a routine practice.

Vaccination involves two injections, 4–6 weeks apart, at the time of introduction, and then a booster shot every year. Complete the vaccinations 4 weeks before joining.

PURCHASE

DELIVERY
MANAGING OLDER HERD BULL

AFTER PURCHASE TIPS
DURING MATING

ARRIVAL

MATING NEW YOUNG BULLS
NORTHERN AUSTRALIA



BRINGING YOUR NEW BULL HOME

Consult with your veterinarian and draw up a policy for treating bulls on arrival and then annually. Bulls should be drenched to prevent introducing worms and, if necessary, should be treated for lice.

Plan to give follow-up vaccinations 4–6 weeks later. Leave the bulls in the yards for the next day or two on feed and water to allow them to settle down with other stock for company. A bull's behaviour will decide how quickly he can be moved out to paddocks.

MATING NEW YOUNG BULLS

Newly purchased young bulls should not be placed with older herd bulls for multiple-sire joining. The older, dominant bull will not allow the young bulls to work, and will knock them around while keeping them away from the cows.

Use new bulls in either single-sire groups or with young bulls their own age. If a number of young bulls are to be used together, run them together for a few weeks before joining starts. They sort out their pecking order quickly and have few problems later.

When the young bulls are working, inspect them regularly and closely.

MATING NEW YOUNG BULLS

Older working bulls also need special care and attention before mating starts. They should be tested or checked every year for physical soundness, testicle tone, and serving capacity or ability.

All bulls to be used must be free-moving, active and in good condition. Working bulls may need supplementary feeding before the joining season to bring up condition.

DURING MATING

- Check bulls at least twice each week for the first 2 months. Get up close to them and watch each bull walk; check for swellings around the sheath and for lameness.
- Have a spare bull or bulls available to replace any that break down. Replace any suspect bull immediately.
- Rotate bulls in single-sire groups to make sure that any bull infertility is covered. Single-sire joining works well but it has risks. The bulls must be checked regularly and carefully, or the bulls should be rotated every one or two cycles.

Bulls are a large investment for breeding herds and they have a major effect on herd fertility. A little time and attention to make sure they are fit, free from disease and actively working is well worthwhile.

NORTHERN AUSTRALIA

Although the Angus breed originated in a cooler climate, they can adapt to subtropical regions with many straight-bred and cross bred producers finding success in Northern Australia. Some of the following information may also be helpful for new bulls located in more temperate climates.

ADAPTATION

They key to Northern success for Angus is that cattle introduced from the Southern regions of Australia be allowed to adapt to their new environment before commencing their working life. If possible, a break of 3 months is advisable before you set your bull to work.

PURCHASE IN COOLER MONTHS

Ensure your bulls are in good condition before they do commence their working life. The cooler months are an ideal time to purchase and introduce Angus cattle, allowing them plenty of time to acclimatise.

CHANGE OF FEED SOURCE

When inducting Angus cattle into your herd consider their source of feed. Have you taken an animal which has been supplemented on grain straight to a dry pasture? Animals should be gradually changed over to their new feed to ensure they do not lose condition. This may involve using supplements which could include dry lick/urea blocks.

MANAGING CATTLE TICKS

For ticky areas, bulls should be vaccinated prior to transport and given another booster afterwards. Remember males are more susceptible to ticks than females.

Information is provided by the Department of Primary Industries NSW. For further information visit the DPI web site: www.dpi.nsw.gov.au. or www.angusaustralia.com.au. Further reading - Buying Angus Bulls

FOR FURTHER INFORMATION VISIT
www.angusaustralia.com.au

Angus Australia Locked Bag 11, Armidale NSW 2350
Phone: (02) 6772 3011 | Fax: (02) 6772 3095
Email: office@angusaustralia.com.au
Website: www.angusaustralia.com.au



RECESSIVE GENETIC CONDITIONS

INFORMATION FOR BULL BUYERS

This is information for bull buyers about the recessive genetic conditions, Arthrogyrosis Multiplex (AM), Hydrocephalus (NH), Contractural Arachnodactyly (CA) and Developmental Duplications (DD).

Putting undesirable Genetic Recessive Conditions in perspective

All animals, including humans, carry single copies (alleles) of undesirable or “broken” genes. In single copy form, these undesirable alleles usually cause no harm to the individual. But when animals carry 2 copies of certain undesirable or “broken” alleles it often results in bad consequences. Advances in genomics have facilitated the development of accurate diagnostic tests to enable the identification and management of numerous undesirable or “broken” genes. Angus Australia is proactive in providing its members and their clients with relevant tools and information to assist them in the management of known undesirable genes and our members are leading the industry in their use of this technology.

Key point: With today’s DNA tools undesirable genetic conditions can be managed!

What are AM, NH, CA and DD?

AM, NH, CA and DD are all recessive conditions caused by “broken” alleles within the DNA of individual animals. When a calf inherits 2 copies of the AM or NH alleles their development is so adversely affected that they will be still-born.

In other cases, such as CA and DD, calves carrying 2 copies of the broken allele may reach full-term. In such cases the animal may either appear relatively normal, or show physical symptoms that affect their health and/or performance.

Key point: The number of reported observations of AM, NH, CA and DD calves is very low and there is certainly no need for panic.

How are the conditions inherited?

Research in the U.S. and Australia indicates that AM, NH, CA and DD are simply inherited recessive conditions. This means that a single gene (or pair of alleles) controls the condition. For this mode of inheritance two copies of the undesirable allele need to be present before the condition is seen; in which case you may get an abnormal calf. A more common example of a trait with a simple recessive pattern of inheritance is black and red coat colour.

Animals with only one copy of the undesirable allele (and one copy of the normal form of the allele) appear normal and are known as “carriers”.

What happens when carriers are mated to other animals?

Carriers, will on average, pass the undesirable allele to a random half (50 %) of their progeny.

When a carrier bull and carrier cow is mated, there is a 25% chance that the resultant calf will inherit two normal alleles, a 50% chance that the mating will result in a carrier (i.e. with just 1 copy of the undesirable allele), and a 25% chance that the calf will inherit two copies of the undesirable gene.

If animals tested free of the undesirable gene are mated to carrier animals the condition will not be expressed at all. All calves will appear normal, but approximately half (50%) could be expected to be carriers.

Key point: For the condition to be expressed the undesirable gene needs to be present on both sides of the pedigree and both the sire and dam need to be a carrier.

How is the genetic status of animals reported?

DNA-based diagnostic tests have been developed which can be used to determine whether an individual animal is either a carrier or free of the alleles resulting in AM, NH, CA or DD.

Angus Australia uses advanced software to calculate the probability of (untested) animals to being carriers of AM, NH, CA or DD. The software uses the test results of any relatives in the calculations and the probabilities may change as new results for additional animals become available.

The genetic status of animals is being reported using five categories:

AMF	Tested AM free
AMFU	Based on pedigree AM free – Animal has not been tested
AM__%	__% probability the animal is an AM carrier
AMC	Tested AM-Carrier
AMA	AM-Affected

For NH, CA and DD, simply replace AM in the above table with NH, CA or DD.

Registration certificates and the Angus Australia web-database display these codes. This information is displayed on the animal details page and can be accessed by conducting an “Animal Search” from the Angus Australia website or looking up individual animals listed in a sale catalogue.

Key point: The genetic status of an animal is subject to change and will be re- analysed and adjusted each week as DNA test results of relatives are received.

Implications for Commercial Producers

Your decision on the importance of the genetic condition status of replacement bulls should depend on the genetics of your cow herd (which bulls you previously used) and whether some female progeny will be retained or sold as breeders.

Most Angus breeders are proactive and transparent in managing known genetic conditions, endeavouring to provide the best information available. The greatest risk to the commercial sector from undesirable genetic recessive conditions comes from unregistered bulls with unknown genetic background. The genetic condition testing that Angus Australia seedstock producers are investing in provides buyers of registered Angus bulls with unmatched quality assurance.

For further information contact Angus Australia’s Breed Development and Innovation Manager at (02) 6773 4602.



RS IRELANDS HEIRLOOM H343 (AI) (ET) VICH343
Verified to Sire

DOB: 16/08/2012 **Tattoo:** ILS H343 (T&F) **HBR**

BOOROOMOOKA UNDERTAKEN Y145
RENNYLEA C277 (AI) (ET)
BOORHAMAN Y55 (AI)

Sire: VICF1 IRELANDS FLETCHER F1
VERMILION YELLOWSTONE
TE MANIA WARGOONA Z31 (AI)
TE MANIA WARGOONA T285 (ACR)

G D A R TRAVELER 044
G A R GRID MAKER
G A R PRECISION 2536

Dam: VICB12 IRELANDS ROSEBUD B12 (AI) (ET)
PAPA EQUATOR 2928
IMRAN ROSEBUD U17 (AI) (ET)
SOUTH CROSS L11+91 (AI) (ET)

Traits Observed: BWT,600WT,SS,FAT,EMA,IMF

Angus	February 2018 Angus Australia BREEDPLAN									
	BIRTH					GROWTH				
	Dir	Dtrs	GL	BWT	200	400	600	MCW	Milk	
EBV's	-0.4	+0.8	-4.5	+7.2	+60	+116	+151	+141	+12	
Acc	56%	48%	65%	80%	87%	87%	84%	76%	62%	

FERTILITY			CARCASS				OTHER		
SS	DTC	CWT	EMA	RIB	P8	RBV	IMF	NFI-P	NFI-F
+2.6	-2.3	+87	+3.4	-3.0	-2.9	+1.1	+1.8	+0.02	-0.24
85%	45%	73%	71%	70%	72%	66%	63%	52%	54%

Genetic Status: AMFU NHFU CAFU DDFU

BREEDPLAN Statistics: Num of Herds 1, Progeny Analysed 74, Scan Progeny 22, Num of Dtrs 0

Selection Indexes

ABI	DOM	GRN	GRS
+\$136	+\$126	+\$152	+\$131

RS IRELANDS HIERARCHY H152 (AI) VICH152
Verified to Sire

DOB: 06/04/2012 **Tattoo:** ILS H152 (T&F) **HBR**

BOOROOMOOKA UNDERTAKEN U170 (AI)
BOOROOMOOKA UNDERTAKEN Y145
BOOROOMOOKA UAAISE U101 (AI)

Sire: NORE11 RENNYLEA EDMUND E11 (AI) (ET)
YTHANBRAE HENRY VIII U8 (AI) (ET)
LAWSONS HENRY VIII Y5 (AI)
YTHANBRAE DIRECTION T270 (AI)

RENNYLEA XPONENTIAL X555 (AI) (ET)
TE MANIA AMBASSADOR A134 (AI)
TE MANIA LOWAN Y211 (ACR) (AI)

Dam: VICE5 IRELANDS WARGOONA E5 (AI) (ET)
VERMILION YELLOWSTONE
TE MANIA WARGOONA Z31 (AI)
TE MANIA WARGOONA T285 (ACR)

Traits Observed: BWT,200WT,400WT,FAT,EMA,IMF

Angus	February 2018 Angus Australia BREEDPLAN									
	BIRTH					GROWTH				
	Dir	Dtrs	GL	BWT	200	400	600	MCW	Milk	
EBV's	+3.7	+0.5	-5.8	+1.8	+43	+82	+107	+87	+20	
Acc	75%	60%	96%	96%	90%	91%	89%	79%	66%	

FERTILITY			CARCASS				OTHER		
SS	DTC	CWT	EMA	RIB	P8	RBV	IMF	NFI-P	NFI-F
+2.2	-5.0	+66	+7.5	+0.9	-0.2	+0.8	+2.5	+0.30	+0.67
89%	55%	76%	78%	78%	78%	72%	73%	61%	63%

Genetic Status: AMF NHF CAF DDF

BREEDPLAN Statistics: Num of Herds 14, Progeny Analysed 198, Scan Progeny 61, Num of Dtrs 1

Selection Indexes

ABI	DOM	GRN	GRS
+\$129	+\$118	+\$140	+\$123

RS TE MANIA JARCEVO J545 (AI) (ET) VTMJ545
Verified to Mating

DOB: 15/08/2013 **Tattoo:** 5 POINT STAR J545 (T&F) **HBR**

RENNYLEA XPONENTIAL X555 (AI) (ET)
TE MANIA AMBASSADOR A134 (AI)
TE MANIA LOWAN Y211 (ACR) (AI)

Sire: BNAD145 TUWHARETOA REGENT (AI) (ET)
YTHANBRAE HENRY VIII U8 (AI) (ET)
LAWSONS HENRY VIII Y5 (AI)
YTHANBRAE DIRECTION T270 (AI)

O S U 6T6 ULTRA
B T ULTRAVOX 297E
FINKS VIXON 788

Dam: VTMZ74 TE MANIA LOWAN Z74 (AI) (ET)
B/R NEW DESIGN 036
TE MANIA LOWAN V201 (AI) (ET)
TE MANIA LOWAN R426 (AI) (ET)

Traits Observed: BWT,200WT,400WT(x2),SS,FAT,EMA,IMF,DOC

Angus	February 2018 Angus Australia BREEDPLAN									
	BIRTH					GROWTH				
	Dir	Dtrs	GL	BWT	200	400	600	MCW	Milk	
EBV's	-1.9	-4.7	-2.8	+4.5	+44	+81	+110	+97	+17	
Acc	64%	62%	71%	79%	83%	85%	80%	75%	68%	

FERTILITY			CARCASS				OTHER		
SS	DTC	CWT	EMA	RIB	P8	RBV	IMF	NFI-P	NFI-F
+2.5	-5.9	+68	+4.3	+1.5	+0.8	-1.2	+3.8	+0.40	+0.56
83%	61%	75%	73%	73%	74%	70%	70%	64%	65%

Genetic Status: AMFU NHFU CAFU DDFU

BREEDPLAN Statistics: Num of Herds 1, Progeny Analysed 26, Scan Progeny 9, Num of Dtrs 0

Selection Indexes

ABI	DOM	GRN	GRS
+\$119	+\$101	+\$140	+\$108

RS**TE MANIA JINDRA J1153**VTMJ1153
Verified to Sire**DOB:** 02/09/2013**Tattoo:** 5 POINT STAR J1153 (T&F)**HBR**TE MANIA AMBASSADOR A134 (AI)
TUWHARETOA REGENT D145 (AI) (ET)
LAWSONS HENRY VIII Y5 (AI)**Sire:** VTMG429 TE MANIA GENERAL G429 (AI)TE MANIA ULONG U41 (AI) (ET)
TE MANIA DANDLOO Z811 (AI)
TE MANIA DANDLOO X812 (ACR)TE MANIA ULONG U41 (AI) (ET)
TE MANIA AFRICA A217 (AI)
TE MANIA JEDDA Y32 (AI) (ET)**Dam:** VTMF786 TE MANIA JEDDA F786 (ACR)B/R NEW DIMENSION 7127
TE MANIA JEDDA B958 (ACR) (AI) (ET)
TE MANIA JEDDA W297 (AI) (ET)**Selection Indexes**

ABI	DOM	GRN	GRS
+\$113	+\$102	+\$123	+\$106

Traits Observed: BWT,200WT,400WT(x2),SS,FAT,EMA,IMF,DOC

Angus	February 2018 Angus Australia BREEDPLAN									
	BIRTH					GROWTH				
	Dir	Dtrs	GL	BWT	200	400	600	MCW	Milk	
EBV's	-2.4	+0.1	-4.2	+2.8	+38	+65	+88	+60	+23	
Acc	57%	52%	68%	78%	80%	83%	78%	72%	62%	

FERTILITY			CARCASS				OTHER			
SS	DTC	CWT	EMA	RIB	P8	RBY	IMF	NFI-P	NFI-F	
+4.1	-5.1	+32	+9.0	+0.3	+1.3	+0.5	+3.2	+0.34	+0.52	
76%	49%	71%	65%	66%	68%	62%	62%	54%	57%	

Genetic Status: AMFU NHFU CAFU DDF*BREEDPLAN Statistics:* Num of Herds 1, Progeny Analysed 19, Scan Progeny 1, Num of Dtrs 0**RS****MILLAH MURRAH KINGDOM K35 (AI) (ET)**NMMK35
Verified to Mating**DOB:** 29/01/2014**Tattoo:** JRT (CONJOINED) K35 (T&F)**HBR**WAITARA VALLEY BIG MAX
WAITARA VALLEY TEX
WAITARA VALLEY L578**Sire:** NZE469 HINGAIA 469 (AI)BACK TRACK P&P ROYAL 28
HINGAIA 910
HINGAIA D208LEACHMAN RIGHT TIME
BT RIGHT TIME 24J
SITZ EVERELDA ENTENSE 1905**Dam:** NMMG41 MILLAH MURRAH FLOWER G41 (AI)BON VIEW NEW DESIGN 1407
MILLAH MURRAH FLOWER C15 (AI)
MILLAH MURRAH FLOWER A81 (AI)**Selection Indexes**

ABI	DOM	GRN	GRS
+\$96	+\$89	+\$86	+\$101

Traits Observed: BWT,200WT,400WT,SS,FAT,EMA,IMF,DOC,Genomics

Angus	February 2018 Angus Australia BREEDPLAN									
	BIRTH					GROWTH				
	Dir	Dtrs	GL	BWT	200	400	600	MCW	Milk	
EBV's	-10.7	-2.6	-2.3	+8.9	+55	+97	+136	+141	+7	
Acc	83%	62%	98%	98%	97%	97%	90%	80%	67%	

FERTILITY			CARCASS				OTHER			
SS	DTC	CWT	EMA	RIB	P8	RBY	IMF	NFI-P	NFI-F	
+0.5	-4.4	+64	+8.4	-0.8	-0.6	+1.6	-0.4	-0.26	-0.29	
96%	59%	79%	84%	84%	83%	77%	82%	66%	68%	

Genetic Status: AMF NHF CAF DDF*BREEDPLAN Statistics:* Num of Herds 64, Progeny Analysed 982, Scan Progeny 320, Num of Dtrs 0**RS****V A R RESERVE 1111 (ET)**USA16916944
Verified to Sire**DOB:** 31/01/2011**Tattoo:** 1111**HBR**A A R NEW TREND
BOYD NEW DAY 8005
S V F FOREVER LADY 57D**Sire:** USA14675445 B/R NEW DAY 454B/R NEW DESIGN 323
B/R RUBY 1224
H F RUBY 036-951CONNELLY LEAD ON
CONNELLY ONWARD
ALTUNE OF CONANGA 6104**Dam:** USA16143141 SANDPOINT BLACKBIRD 8809G A R GRID MAKER
RIVERBEND BLACKBIRD 4301
RIVERBEND BLACKBIRD 2204**Selection Indexes**

ABI	DOM	GRN	GRS
+\$121	+\$117	+\$127	+\$119

Traits Observed: Genomics

Angus	February 2018 Angus Australia BREEDPLAN									
	BIRTH					GROWTH				
	Dir	Dtrs	GL	BWT	200	400	600	MCW	Milk	
EBV's	+3.6	-0.1	-4.2	+2.5	+45	+83	+109	+83	+15	
Acc	88%	78%	99%	98%	98%	98%	98%	91%	89%	

FERTILITY			CARCASS				OTHER			
SS	DTC	CWT	EMA	RIB	P8	RBY	IMF	NFI-P	NFI-F	
+0.9	-2.8	+58	+7.5	-2.4	-2.5	+1.9	+1.8	+0.10	+0.38	
98%	53%	87%	88%	88%	84%	81%	86%	64%	68%	

Genetic Status: AMF NHF CAF DDF*BREEDPLAN Statistics:* Num of Herds 70, Progeny Analysed 1210, Scan Progeny 662, Num of Dtrs 56





LOT 7
MERLEWOOD
KINGDOM M90 (AI)

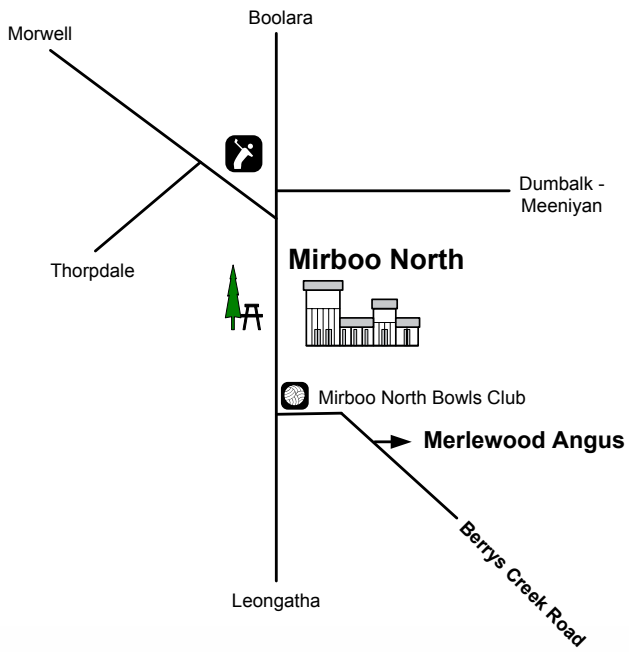


LOT 8
MERLEWOOD
JINDRA M11



LOT 15
MERLEWOOD
KINGDOM M29 (AI)





Follow us
 Blog merlewoodangus.com.au/chewing-the-cud
 Facebook [/merlewoodangusblackcattle](https://www.facebook.com/merlewoodangusblackcattle)
 Twitter [/merlewoodangus](https://twitter.com/merlewoodangus)
 Instagram [/merlewoodangus](https://www.instagram.com/merlewoodangus)

www.merlewoodangus.com.au

Stud Principals :
 Daniel and Anne Marie Barrow
 M. 0425 862 941
 E. merlewoodangus@bigpond.com

Farm Manager
 Luke Buchanan
 M. 0458 588 810

Breed Consultant :
 Wille Milne M.0428 793 521



Landmark :
 Ray Attwell M.0428 836 136
 Peter Godbolt M. 0457 591 929
 Brian McCormack 0407 931 735



Elders :
 Ross Milne M. 0408 057 558,
 Dennis Linley M. 0417 052 445
 Peter Rollason M. 0419 600 323



“Breeding Quality from Head to Tail”