



13 March 2026
at 12:00pm AEDT
On Property Sale

37 BULLS



LOT 2
MERLEWOOD
BAR DYNAMIC V112



LOT 7
MERLEWOOD
SUPER TROOPER V80



LOT 22
MERLEWOOD
STELLAR V114

MERLEWOOD ANGUS

TENTH AUTUMN BULL SALE

13 March 2026 at 12:00pm AEDT
On Property Sale

880 Berrys Creek Rd, Mirboo North Victoria 3871



Australia's Livestock Marketplace

View videos of the bulls prior to auction day
on our website merlewoodangus.com.au

Stud Principals

Daniel and Anne Marie Barrow
M. 0425 862 941
E. merlewoodangus@bigpond.com

Breed Consultant :

Wille Milne M.0428 793 521



Follow us

Facebook [/merlewoodangusblackcattle](https://www.facebook.com/merlewoodangusblackcattle)

Instagram [/merlewoodangus](https://www.instagram.com/merlewoodangus)

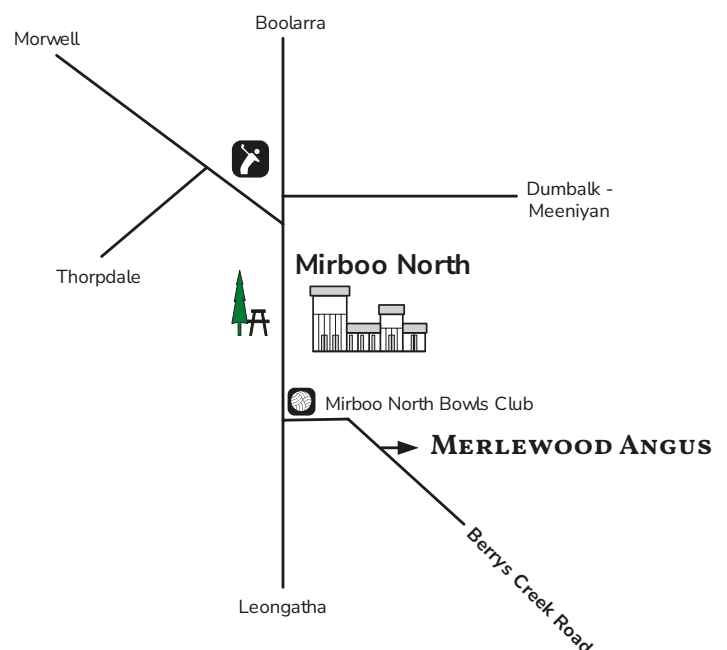
www.merlewoodangus.com.au



Tim Woodham M. 0439 015 115
Peter Godbolt M. 0457 591 929
Brian McCormack 0407 931 735



Ross Milne M. 0408 057 558
Hayden Hanratty M. 0429 181 672
Ryan Bajada M. 0435 411 536



SALE INFORMATION

VENUE

Merlewood Angus, 880 Berrys Creek Road, Mirboo North 3871

INSPECTION

Sale commences at 12:00pm on Friday 13 March 2026 with sale bulls being penned and available for viewing from 9:00am onwards on sale day. The bulls will be sold by open-cry auction with video footage of each sale bull displayed on large screens in the background.

If for some reason you missed us at our Beef Week Open Day and wish to inspect the bulls prior to our sale day, please feel free to call Anne Marie & Daniel on 0425 862 941 to arrange a private inspection. General queries welcome at all times.

SAFETY

All our sale bulls have been screened for safety and are quiet to handle under normal circumstances. Please note that sale day is not a normal environment for cattle and as such we ask you to exercise caution and be alert of fighting bulls. Visitors enter pens at their own discretion. Children are prohibited from entering the bull pens at all times.

AUCTIONS PLUS

The sale is interfaced with AuctionsPlus and will be conducted online in real time. If you cannot attend the sale you must register within 48 hours before the sale to bid. For further information or assistance with registration please contact Peter Rollason on 0419 600 323 or peterrollason@elders.com.au or auctionsplus.com.au

HERD HEALTH

- All sale bulls have been vaccinated for Vibriosis.
- All sale bulls have been vaccinated for Pestivirus.
- All sale bulls have been 7in1 vaccinated.
- All sale bulls have been fertility tested and structurally assessed by Ian Moreland of Studcare Genetics.
- All sale bulls are registered with Angus Australia.
- All sale bulls are sire verified using the ANGUS GS DNA testing.

OUTSIDE AGENT REBATE

2% rebate will be paid to outside agents, introducing a buyer and settling within 7 days of sale date.

GST

As is common industry practice, all bulls are sold GST exclusive.

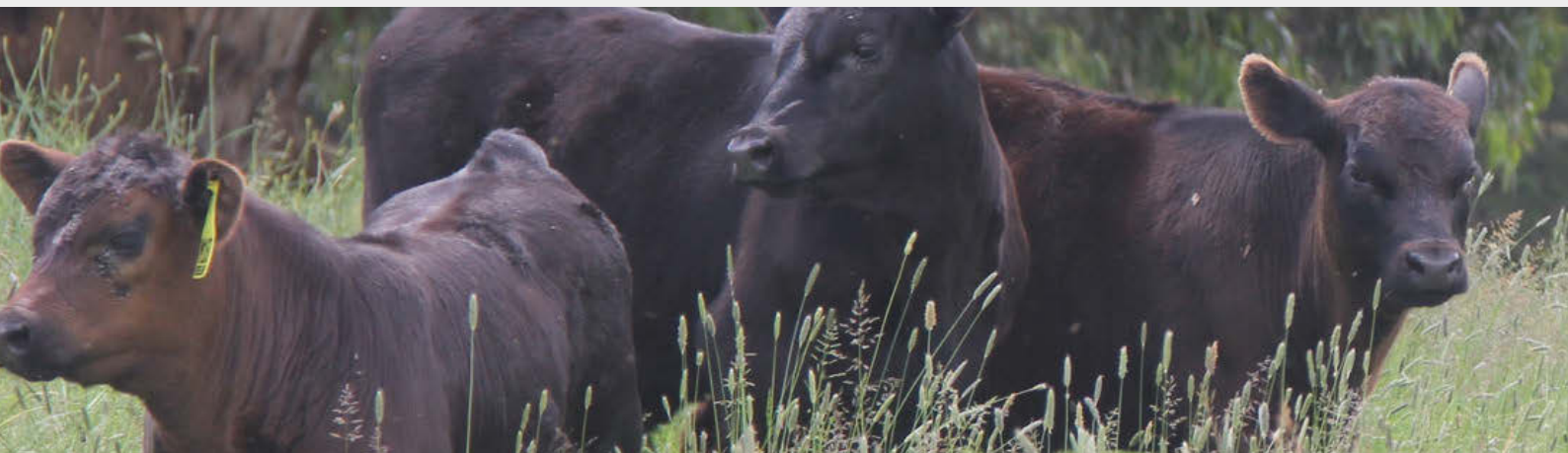
DELIVERY

Courtesy of Merlewood Angus free freight will be provided for distances within 150km of our property.

INSURANCE

Please note that at the fall of the hammer the bull belongs to you. As such we strongly recommend that you take out insurance.

Merlewood Angus recommend insuring all bulls for at least the first year of their working life.





BRINGING YOUR BULL HOME

On arrival at their new home it is important a suitable mob of animals is yarded to greet the bull and minimize the stress on the bull. Suitable animals include pregnant cows, steers but certainly not other bulls.

We strongly urge breeders to rotate their bulls mid-season. No amount of vet checking, semen examination or paddock observation, will detect all cases of transient issues with bull semen. While it is rare, sometimes a bull looks to be doing everything right, but due to unknown stresses, as much as three months prior to the date of service, conception is not achieved. The greatest insurance against low conception is to replace, or swap bulls around, at least three weeks before the end of the joining period.

The bulls are in good joining condition at point of sale, but it is imperative to ensure good nutrition for the bulls during the joining period. You should check the bulls regularly to see they are working, especially in the early stages of joining when the majority of problems occur and early intervention can minimise the damage to the bull and to conception rates.

When joining is complete, bulls should be drenched and placed on good pasture to get back into first grade health without being allowed to get over fat.

SELLING AGENTS

Nutrien Livestock and Elders are Merlewood Angus' selling agents.

This year our auctioneer will be Ross Milne of Elders.

PRE & POST SALES SERVICE

We believe that purchasing your bull first Merlewood Angus bull is only the start of the cattle conversation. We encourage open and honest communication at all times. We are here to answer all your breeding queries and assist you with choosing a bull each year for your commercial breeding program and as we get to know both you and your herd we can offer a more tailored-service.

For all your pre-sale queries contact Anne Marie & Daniel on 0425 862 941.

GUARANTEE

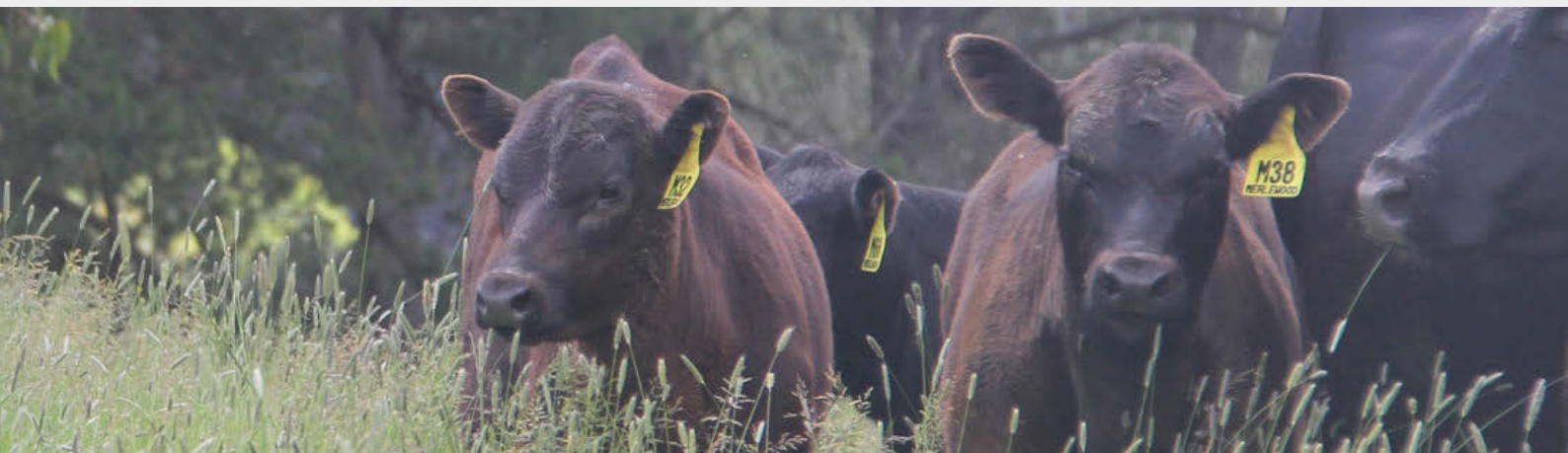
Every bull is guaranteed to be a breeder at the time of sale and is guaranteed fertile for 12 months from sale day. If a bull should prove infertile or unable to serve cows naturally (provided it is not caused by injury or disease contracted post sale), the purchase price will be refunded or a credit given, equal to the purchase value of the bull less salvage value.

SEMEN RIGHTS

Merlewood Angus retains the right to collect semen from all sale bulls for use within their own herd. In the event of the semen collection right being exercised, this will be at a time convenient to the owner and at Merlewood Angus' cost. In the event of the bull being on-sold, this right carries forward.

DISCLAIMER

Whilst all due care and attention has been paid to accuracy in the compilation of this catalogue and the information, neither the vendors, selling agents or representatives there of assume any responsibility for the correctness, use or interpretation of this information on animals included herein.



WELCOME

Dear Farmers

Each year, there seems to be more curveballs thrown at farming families all over Australia. Despite, or perhaps because of these adversities, farmers and their families are always digging deep to access the resources that well and live inside them. This tenacity, coupled with resilience and flexibility, is what allows farmers to continue to farm smarter and not harder to enable and facilitate successful farming outcomes.

The ability to continue turn a profit whilst simultaneously being stewards of the land and advocates of animal welfare relies on solid, consistent genetics. To this end the one thing that never waivers, here at Merlewood Angus, is our commitment to deliver the highest quality of black angus bulls that discerning and successful farmers require. Merlewood Angus are proud to continually bring a select cohort of the best black Angus sires to the Australian market in autumn of each year. Selected from a group of over 150 bulls, only the best-of-the-best get to breed with the Merlewood Angus brand.

Leading the line up at our 10th Annual Bull Sale is Merlewood Keystone V39. A strong start with each successive lot that follows being equally stellar. Purchasing a bull is a highly personal and subjective process. With all the bulls in our catalogue being of exceptional standard, we will leave it you, the expert of your own eye and herd to pick the bull that works for you. We will let the videos and the bulls themselves showcase their attributes and heritable traits.

In summary the Feature Stud Sires (working bulls) of our 2026 Bull Sale Sons:

- **Boonaroo Keystone Q90** has a quartet of bulls selling – namely Lots 1, 10, 26 and 33.
- **Banquet Quirky Q209** has a quartet of bulls selling – namely Lots 4, 15, 19 and 37
- **Granite Ridge Super Trooper S96** has a septet of bulls selling – namely Lots 3, 7, 9, 18,29, 31 and 32
- **Merlewood Stellar R49** has a quintet of his sons selling – namely Lots 13, 22, 23, 24 and 30.

In addition to the feature stud sires listed above, our upcoming bull sale also includes a select group of AI sired sons. AI sires include, but are not limited to, Ellingson Prolific, Poss Rawhide, Ezar Step Up 9718, BAR Dynamic and Ellingson Prolific.

Full details on the pedigree of all our stud sires can be found on our website Merlewood Angus.



Scan the QR code with your smart device to land on our genetics page and watch video footage.

Individual lot videos for each of the sale bulls will be available on our website Merlewood Angus www.merlewoodangus.com and the AuctionsPlus www.auctionsplus.com online bidding platform from mid to late February onwards.

As always, we are only ever a phone call away. Please do call us with any queries you may have. In the meantime, stay well and we look forward to welcoming you warmly to our 10th Annual Bull Sale. Thank you for your decade of support. It has been an exciting decade, and we eagerly welcome the next ten years and beyond.

With warm regards

Anne Marie & Daniel Barrow

Stud Principals

Merlewood Angus

TransTasman Angus Cattle Evaluation - February 2026 Reference Tables

BREED AVERAGE SELECTION INDEXES

	\$A	\$D	\$GN	\$GS	\$A-L	\$D-L	\$GN-L	\$GS-L	\$PRO	\$T
Breed Avg	+212	+175	+281	+197	+361	+312	+433	+405	+161	+193

* Breed average represents the average EBV of all 2024 drop Australian Angus and Angus-influenced seedstock animals analysed in the February 2026 TransTasman Angus Cattle Evaluation

PERCENTILE BANDS TABLE - SELECTION INDEXES

% Band	\$A	\$D	\$GN	\$GS	\$A-L	\$D-L	\$GN-L	\$GS-L	\$PRO	\$T
1%	Greater Profitability	+245	+388	+280	+470	+410	+567	+540	+248	Greater Profitability
5%	Greater Profitability	+225	+358	+257	+439	+382	+530	+501	+224	Greater Profitability
10%	Greater Profitability	+214	+342	+244	+423	+367	+511	+481	+210	Greater Profitability
15%	Greater Profitability	+207	+331	+235	+412	+357	+497	+467	+201	Greater Profitability
20%	Greater Profitability	+201	+322	+228	+404	+349	+486	+456	+194	Greater Profitability
25%	Greater Profitability	+196	+314	+222	+396	+342	+477	+447	+188	Greater Profitability
30%	Greater Profitability	+192	+308	+217	+389	+336	+468	+439	+182	Greater Profitability
35%	Greater Profitability	+188	+301	+212	+383	+331	+461	+431	+177	Greater Profitability
40%	Greater Profitability	+184	+295	+207	+377	+325	+453	+423	+172	Greater Profitability
45%	Greater Profitability	+180	+289	+203	+371	+320	+446	+416	+168	Greater Profitability
50%	Greater Profitability	+177	+284	+198	+365	+315	+438	+409	+163	Greater Profitability
55%	Greater Profitability	+173	+278	+194	+359	+309	+431	+402	+158	Greater Profitability
60%	Greater Profitability	+169	+272	+189	+353	+304	+423	+394	+153	Greater Profitability
65%	Greater Profitability	+165	+265	+184	+346	+298	+415	+386	+148	Greater Profitability
70%	Greater Profitability	+160	+258	+179	+339	+291	+406	+378	+142	Greater Profitability
75%	Greater Profitability	+156	+250	+173	+330	+284	+396	+368	+136	Greater Profitability
80%	Greater Profitability	+150	+241	+166	+321	+276	+384	+357	+129	Greater Profitability
85%	Greater Profitability	+144	+230	+157	+309	+266	+369	+343	+120	Greater Profitability
90%	Greater Profitability	+135	+216	+147	+294	+253	+350	+325	+110	Greater Profitability
95%	Greater Profitability	+122	+194	+131	+269	+233	+319	+297	+92	Greater Profitability
99%	Greater Profitability	+92	+149	+96	+215	+186	+256	+236	+56	Greater Profitability
	Lower Profitability	Lower Profitability	Lower Profitability	Lower Profitability	Lower Profitability	Lower Profitability	Lower Profitability	Lower Profitability	Lower Profitability	Lower Profitability

* The percentile band represents the distribution of EBVs across the 2024 drop Australian Angus and Angus-influenced seedstock animals analysed in the February 2026 TransTasman Angus Cattle Evaluation

Understanding the TransTasman Angus Cattle Evaluation (TACE)

What is the TransTasman Angus Cattle Evaluation?

The TransTasman Angus Cattle Evaluation is the genetic evaluation program adopted by Angus Australia for Angus and Angus influenced beef cattle. The TransTasman Angus Cattle Evaluation uses Best Linear Unbiased Prediction (BLUP) technology to produce Estimated Breeding Values (EBVs) of recorded cattle for a range of important production traits (e.g. weight, carcass, fertility).

The TransTasman Angus Cattle Evaluation is an international genetic evaluation and includes pedigree, performance and genomic information from the Angus Australia and Angus New Zealand databases, along with selected information from the American and Canadian Angus Associations.

The TransTasman Angus Cattle Evaluation utilises a range of genetic evaluation software, including the internationally recognised BLUPF90 family of programs, and BREEDPLAN® beef genetic evaluation analytical software, as developed by the Animal Genetics and Breeding Unit (AGBU), a joint institute of NSW Agriculture and the University of New England, and Meat and Livestock Australia Limited (MLA).

What is an EBV?

An animal's breeding value can be defined as its genetic merit for each trait. While it is not possible to determine an animal's true breeding value, it is possible to estimate it. These estimates of an animal's true breeding value are called EBVs (Estimated Breeding Values).

EBVs are expressed as the difference between an individual animal's genetics and a historical genetic level (i.e. group of animals) within the TACE genetic evaluation, and are reported in the units in which the measurements are taken.

Using EBVs to Compare the Genetics of Two Animals

TACE EBVs can be used to estimate the expected difference in the genetics of two animals, with the expected difference equating to half the difference in the EBVs of the animals, all other things being equal (e.g. they are joined to the same animal/s).

For example, a bull with a 200 Day Growth EBV of +60 would be expected to produce progeny that are, on average, 10 kg heavier at 200 days of age than a bull with a 200 Day Growth EBV of +40 kg (i.e. 20

kg difference between the sire's EBVs, then halved as the sire only contributes half the genetics).

Or similarly, a bull with an IMF EBV of +3.0 would be expected to produce progeny with on average, 1% more intramuscular fat in a 400 kg carcass than a bull with a IMF EBV of +1.0 (i.e. 2% difference between the sire's EBVs, then halved as the sire only contributes half the genetics).

Using EBVs to Benchmark an Animal's Genetics with the Breed

EBVs can also be used to benchmark an animal's genetics relative to the genetics of other Angus or Angus infused animals recorded with Angus Australia.

To benchmark an animal's genetics relative to other Angus animals, an animal's EBV can be compared to the EBV reference tables, which provide:

- the breed average EBV
- the percentile bands table

The current breed average EBV is listed on the bottom of each page in this publication, while the current EBV reference tables are included at the end of these introductory notes.

For easy reference, the percentile band in which an animal's EBV ranks is also published in association with the EBV.

Considering Accuracy

An accuracy value is published with each EBV, and is usually displayed as a percentage value immediately below the EBV.

The accuracy value provides an indication of the reliability of the EBV in estimating the animal's genetics (or true breeding value), and is an indication of the amount of information that has been used in the calculation of the EBV.

EBVs with accuracy values below 50% should be considered as preliminary or of low accuracy, 50-74% as of medium accuracy, 75-90% of medium to high accuracy, and 90% or greater as high accuracy.

Description of TACE EBVs

EBVs are calculated for a range of traits within TACE, covering calving ease, growth, fertility, maternal performance, carcass merit, feed efficiency and structural soundness. A description of each EBV included in this publication is provided on the following page.

UNDERSTANDING ESTIMATED BREEDING VALUES (EBVs)

Calving Ease/Birth	CEDir	%	Genetic differences in the ability of a sire's calves to be born unassisted from 2 year old heifers.	Higher EBVs indicate fewer calving difficulties in 2 year old heifers.
	CEDtrs	%	Genetic differences in the ability of a sire's daughters to calve unassisted at 2 years of age.	Higher EBVs indicate fewer calving difficulties in 2 year old heifers.
	GL	days	Genetic differences between animals in the length of time from the date of conception to the birth of the calf.	Lower EBVs indicate shorter gestation length.
	BW	kg	Genetic differences between animals in calf weight at birth.	Lower EBVs indicate lighter birth weight.
Growth	200 Day	kg	Genetic differences between animals in live weight at 200 days of age due to genetics for growth.	Higher EBVs indicate heavier live weight.
	400 Day	kg	Genetic differences between animals in live weight at 400 days of age.	Higher EBVs indicate heavier live weight.
	600 Day	kg	Genetic differences between animals in live weight at 600 days of age.	Higher EBVs indicate heavier live weight.
	MCW	kg	Genetic differences between animals in live weight of cows at 5 years of age.	Higher EBVs indicate heavier mature weight.
	Milk	kg	Genetic differences between animals in live weight at 200 days of age due to the maternal contribution of its dam.	Higher EBVs indicate heavier live weight.
Fertility	DtC	days	Genetic differences between animals in the time from the start of the joining period (i.e. when the female is introduced to a bull) until subsequent calving.	Lower EBVs indicate shorter time to calving.
	SS	cm	Genetic differences between animals in scrotal circumference at 400 days of age.	Higher EBVs indicate larger scrotal circumference.
Carcass	CWT	kg	Genetic differences between animals in hot standard carcass weight at 750 days of age.	Higher EBVs indicate heavier carcass weight.
	EMA	cm ²	Genetic differences between animals in eye muscle area at the 12/13th rib site in a 400 kg carcass.	Higher EBVs indicate larger eye muscle area.
	Rib Fat	mm	Genetic differences between animals in fat depth at the 12/13th rib site in a 400 kg carcass.	Higher EBVs indicate more fat.
	P8 Fat	mm	Genetic differences between animals in fat depth at the P8 rump site in a 400 kg carcass.	Higher EBVs indicate more fat.
	RBY	%	Genetic differences between animals in boned out saleable meat from a 400 kg carcass.	Higher EBVs indicate higher yield.
	IMF	%	Genetic differences between animals in intramuscular fat (marbling) at the 12/13th rib site in a 400 kg carcass.	Higher EBVs indicate more intramuscular fat.
Feed/Temp.	NFI-F	kg/day	Genetic differences between animals in feed intake at a standard weight and rate of weight gain when animals are in a feedlot finishing phase.	Lower EBVs indicate more feed efficiency.
	Doc	%	Genetic differences between animals in temperament.	Higher EBVs indicate better temperament.
Structure	Claw Set	score	Genetic differences in claw set structure (shape and evenness of claws).	Lower EBVs indicate a lower score.
	Foot Angle	score	Genetic differences in foot angle (strength of pastern, depth of heel).	Lower EBVs indicate a lower score.
	Leg Angle	score	Genetic differences in rear leg structure when viewed from the side (angle at front of the hock).	Lower EBVs indicate a lower score.
Selection Index	\$A	\$	Genetic differences between animals in net profitability per cow joined in a typical commercial self replacing herd using Angus bulls. This selection index is not specific to a particular market end-point, but identifies animals that will improve overall net profitability in the majority of commercial, self replacing, grass and grain finishing beef production systems.	Higher selection indexes indicate greater profitability.
	\$A-L	\$	Genetic differences between animals in net profitability per cow joined in a typical commercial self replacing herd using Angus bulls. This selection index is not specific to a particular market end-point, but identifies animals that will improve overall net profitability in the majority of commercial, self replacing, grass and grain finishing beef production systems. The \$A-L index is similar to the \$A index but is modelled on a production system where feed is surplus to requirements for the majority of the year, or the cost of supplying additional feed when animal feed requirements increase is low. While the \$A aims to maintain mature cow weight, the \$A-L does not aim to limit the increase in mature cow weight as there is minimal cost incurred if the feed maintenance requirements of the female breeding herd increase as a result of selection decisions.	Higher selection indexes indicate greater profitability.

UNDERSTANDING ESTIMATED BREEDING VALUES (EBVS)

Selection Indexes

\$D	\$	<p>Genetic differences between animals in net profitability per cow joined in a commercial self replacing herd targeting the domestic supermarket trade. Steers are either finished using pasture, pasture supplemented by grain, or grain (e.g. 50 -70 days) with steers assumed to be slaughtered at 510kg live weight (280kg carcass weight with 12mm P8 fat depth) at 16 months of age.</p>	Higher selection indexes indicate greater profitability.
\$D-L	\$	<p>Genetic differences between animals in net profitability per cow joined in a commercial self replacing herd targeting the domestic supermarket trade. Steers are either finished using pasture, pasture supplemented by grain, or grain (e.g. 50 -70 days) with steers assumed to be slaughtered at 510kg live weight (280kg carcass weight with 12mm P8 fat depth) at 16 months of age.</p> <p>The \$D-L index is similar to the \$D index but is modelled on a production system where feed is surplus to requirements for the majority of the year, or the cost of supplying additional feed when animal feed requirements increase is low.</p> <p>While the \$D aims to maintain mature cow weight, the \$D-L does not aim to limit the increase in mature cow weight as there is minimal cost incurred if the feed maintenance requirements of the female breeding herd increase as a result of selection decisions.</p>	Higher selection indexes indicate greater profitability.
\$GN	\$	<p>Genetic differences between animals in net profitability per cow joined in a commercial self replacing herd targeting pasture grown steers with a 250 day feedlot finishing period for the grain fed high quality, highly marbled markets. Steers are assumed to be slaughtered at 800 kg live weight (455 kg carcass weight with 30 mm P8 fat depth) at 24 months of age, with a significant premium for steers that exhibit superior marbling.</p>	Higher selection indexes indicate greater profitability.
\$GN-L	\$	<p>Genetic differences between animals in net profitability per cow joined in a commercial self replacing herd targeting pasture grown steers with a 250 day feedlot finishing period for the grain fed high quality, highly marbled markets. Steers are assumed to be slaughtered at 800 kg live weight (455 kg carcass weight with 30 mm P8 fat depth) at 24 months of age, with a significant premium for steers that exhibit superior marbling.</p> <p>The \$GN-L index is similar to the \$GN index but is modelled on a production system where feed is surplus to requirements for the majority of the year, or the cost of supplying additional feed when animal feed requirements increase is low.</p> <p>While the \$GN aims to maintain mature cow weight, the \$GN-L does not aim to limit the increase in mature cow weight as there is minimal cost incurred if the feed maintenance requirements of the female breeding herd increase as a result of selection decisions.</p>	Higher selection indexes indicate greater profitability.
\$GS	\$	<p>Genetic differences between animals in net profitability per cow joined in a commercial self replacing herd targeting pasture finished steers. Steers are assumed to be slaughtered at 650 kg live weight (350 kg carcass weight with 12 mm P8 fat depth) at 22 months of age. Emphasis has been placed on eating quality and tenderness to favour animals that are suited to MSA requirements.</p>	Higher selection indexes indicate greater profitability.
\$GS-L	\$	<p>Genetic differences between animals in net profitability per cow joined in a commercial self replacing herd targeting pasture finished steers. Steers are assumed to be slaughtered at 650 kg live weight (350 kg carcass weight with 12 mm P8 fat depth) at 22 months of age. Emphasis has been placed on eating quality and tenderness to favour animals that are suited to MSA requirements.</p> <p>The \$GS-L index is similar to the \$GS index but is modelled on a production system where feed is surplus to requirements for the majority of the year, or the cost of supplying additional feed when animal feed requirements increase is low.</p> <p>While the \$GS aims to maintain mature cow weight, the \$GS-L does not aim to limit the increase in mature cow weight as there is minimal cost incurred if the feed maintenance requirements of the female breeding herd increase as a result of selection decisions.</p>	Higher selection indexes indicate greater profitability.
\$PRO	\$	<p>Genetic differences between animals in net profitability per cow joined in a commercial self replacing herd based in New Zealand that targets the production of grass finished steers for the AngusPure programme. Steers are assumed marketed at approximately 530 kg live weight (290 kg carcass weight with 10 mm P8 fat depth) at 20 months of age, with a significant premium for steers that exhibit superior marbling.</p>	Higher selection indexes indicate greater profitability.
\$T	\$	<p>Genetic difference between animals in net profitability per cow joined in a situation where Angus bulls are being used as a terminal sire over mature breeding females and all progeny, both male and female, are slaughtered. The Angus Terminal Sire Index focusses on increasing growth, carcass yield and eating quality. Daughters are not retained for breeding and therefore no emphasis is given to female fertility or maternal traits.</p>	Higher selection indexes indicate greater profitability.

EBV Quick Reference for MERLEWOOD ANGUS 10TH ANNUAL AUTUMN BULL SALE

Animal Ident	Calving Ease		Birth		Growth				Maternal				Fertility				Carcass				Other				Structural				Indexes	
	Dir	Dtrs	GL	BW	200W	400W	600W	MCW	MBC	MCH	Milk	SS	DTC	CWT	EMA	Rib	Rump	RBV	IMF	NFI-F	Doc	CS	FA	LA	SA	SA-L	SA	SA-L		
1	HOD24V39	+4.3	+0.9	-7.6	+5.8	+70	+134	+185	+191	+0.35	+11.4	+22	+1.5	-4.7	+115	-0.8	-3.6	-5.3	+0.4	+0.5	-0.56	+27	+0.72	+1.12	+1.00	\$192	\$411			
2	HOD24V112	+3.6	+3.6	-4.8	+2.9	+62	+113	+147	+137	+0.53	+6.8	+15	+2.7	-3.9	+68	+2.7	+1.6	-1.1	+2.5	+0.44	+27	+0.70	+0.90	+0.84	\$201	\$381				
3	HOD24V115	+9.3	+6.2	-10.1	+1.8	+53	+92	+124	+114	+0.31	+8.0	+16	+0.5	-1.8	+79	+6.8	+0.8	+1.0	+0.1	+0.7	+0.51	+27	+0.84	+0.72	+0.96	\$169	\$321			
4	HOD24V167	-0.3	+4.1	-6.8	+5.3	+58	+110	+148	+133	+0.40	+6.5	+17	+2.7	-5.3	+76	+4.8	+0.9	+2.2	-0.1	+1.8	-0.21	+7	+0.90	+0.96	+0.98	\$216	\$391			
5	HOD24V64	-1.9	+0.9	-9.1	+7.0	+70	+119	+143	+148	+0.36	+9.4	+14	+3.2	-4.5	+81	+5.2	-3.0	-3.6	+0.4	+2.3	-0.40	+17	+0.56	+0.62	+0.92	\$215	\$391			
6	HOD24V52	-3.4	+0.8	-8.1	+6.1	+73	+125	+158	+151	+0.29	+10.0	+21	+4.2	-3.3	+84	+8.1	+0.2	-0.7	+0.0	+3.0	+0.02	+25	+0.94	+0.90	+1.04	\$228	\$404			
7	HOD24V80	+6.6	+6.8	-7.8	+2.3	+60	+110	+150	+139	+0.33	+8.3	+19	+3.8	-6.1	+94	+3.6	+0.5	-1.5	-0.2	+3.1	+0.12	+21	+0.70	+0.76	+1.00	\$226	\$422			
8	HOD24V71	+4.8	+6.9	-4.9	+4.8	+67	+111	+131	+110	+0.27	+7.6	+11	+3.2	-5.8	+78	+5.1	-2.3	-3.8	+0.6	+1.5	+0.31	+16	+0.54	+0.64	+0.76	\$246	\$417			
9	HOD24V104	+2.1	+2.3	-6.0	+4.1	+68	+120	+159	+151	+0.44	+9.3	+6	+2.2	-3.0	+99	+8.0	-1.4	-2.5	+0.7	+0.1	-0.40	+12	+0.92	+0.78	+0.86	\$206	\$390			
10	HOD24V149	+8.0	+8.1	-5.4	+3.5	+44	+95	+116	+119	+0.59	+6.3	+12	+2.9	-5.1	+58	+4.9	+0.2	+0.9	+0.2	+2.4	+0.23	+9	+0.78	+1.10	+0.82	\$187	\$363			
11	HOD24V69	+1.2	+1.2	-4.6	+6.5	+54	+93	+113	+108	+0.33	+7.5	+16	+3.2	-2.3	+55	+14.6	-1.8	-2.9	+1.3	+2.8	+0.38	+20	+0.92	+0.88	+0.84	\$201	\$339			
12	HOD24V72	+3.5	+9.4	-10.2	+3.8	+68	+116	+156	+150	+0.27	+9.0	+17	+2.5	-3.7	+88	+4.7	-1.6	-1.8	+0.4	+1.1	-0.37	+11	+0.72	+0.68	+0.76	\$217	\$409			
13	HOD24V199	+3.0	+6.5	-4.7	+3.1	+54	+104	+136	+113	+0.31	+7.5	+20	+3.4	-4.5	+76	+2.5	+0.7	+0.9	-0.1	+0.9	+0.13	+22	+0.96	+0.94	+0.98	\$194	\$357			
14	HOD24V84	+2.6	+5.1	-5.1	+4.0	+56	+91	+122	+107	+0.33	+6.5	+16	+2.4	-6.5	+67	+7.0	-1.0	-2.2	+0.3	+2.6	+0.06	+17	-	-	-	\$220	\$377			
15	HOD24V102	+1.8	+4.7	-5.4	+5.0	+49	+94	+113	+91	+0.21	+7.1	+21	+1.7	-6.3	+73	+6.6	+1.1	+3.2	+1.3	-1.2	+0.40	+12	+0.66	+0.84	+0.96	\$216	\$361			
16	HOD24V118	-6.2	+4.6	-3.3	+4.4	+59	+104	+124	+112	+0.24	+6.5	+15	+2.9	-1.8	+68	+10.6	-4.1	-7.2	+1.1	+1.5	-0.41	+21	+0.72	+0.78	+0.96	\$165	\$293			
17	HOD24V55	+6.5	+1.1	-3.3	+2.0	+55	+100	+126	+119	+0.28	+6.3	+16	+0.4	-3.4	+88	+4.4	-1.4	+0.0	+0.7	+0.2	-0.18	+27	+0.72	+1.08	+1.10	\$185	\$343			
18	HOD24V31	+4.3	+1.8	-8.3	+3.3	+58	+101	+125	+118	+0.42	+9.3	+4	+2.9	-8.5	+80	+3.2	+0.5	-2.0	-0.2	+2.2	+0.53	+15	+0.86	+0.66	+0.76	\$225	\$403			
19	HOD24V208	+1.5	+5.7	-5.5	+5.6	+62	+113	+140	+126	+0.41	+7.9	+16	+2.8	-3.2	+87	+8.7	+0.2	+2.1	+0.8	-0.4	-0.10	+13	+0.68	+0.64	+0.82	\$216	\$384			
20	HOD24V155	+3.3	+2.2	-3.0	+5.6	+64	+110	+150	+145	+0.39	+8.8	+15	+1.9	-5.3	+84	+6.9	-1.5	-4.4	+0.2	+4.0	+0.15	+16	+1.12	+1.12	+1.02	\$231	\$414			
21	HOD24V63	+11.2	+7.6	-3.1	+0.0	+42	+88	+108	+86	+0.15	+5.5	+24	+1.7	-2.7	+55	+3.9	+0.2	-0.9	+1.0	+0.5	+0.07	+15	+0.96	+0.90	+0.94	\$165	\$301			
22	HOD24V114	+4.4	+7.3	-3.6	+4.0	+61	+108	+136	+124	+0.16	+7.5	+21	+2.8	-7.0	+84	+5.6	+2.8	+3.8	+0.4	-0.2	+0.24	+16	+0.82	+0.96	+0.86	\$242	\$428			
23	HOD24V237	+4.4	+7.1	-6.2	+4.4	+53	+107	+154	+140	+0.36	+8.8	+19	+2.0	-2.0	+84	+5.3	-0.8	-3.0	+0.8	+1.6	+0.02	+20	+0.80	+0.98	+1.02	\$178	\$352			
24	HOD24V239	+4.5	+0.2	-6.9	+3.4	+50	+87	+115	+75	+0.45	+8.0	+21	+3.0	-4.5	+65	+11.1	-1.4	-2.0	+1.3	+3.5	+0.25	+22	+0.66	+0.90	+0.88	\$240	\$368			
25	HOD24V153	-5.7	-5.1	-3.8	+6.3	+62	+109	+149	+147	+0.32	+6.8	+17	+2.0	-7.7	+80	+11.8	-1.3	-3.0	+0.7	+2.5	+0.04	+29	+1.20	+1.08	+0.84	\$227	\$397			
26	HOD24V76	+6.4	+4.1	-8.9	+1.8	+55	+105	+132	+149	+0.43	+6.6	+13	+1.8	-3.3	+66	+1.6	+0.1	+1.4	+0.2	+0.1	-0.33	+14	+0.82	+1.04	+0.90	\$161	\$347			
27	HOD24V88	+5.4	+9.5	-7.9	+1.7	+47	+87	+102	+89	+0.22	+5.7	+20	-0.6	-5.7	+62	+3.3	+0.3	-1.4	-0.4	+5.1	+0.46	+9	+0.78	+0.66	+0.72	\$217	\$367			
28	HOD24V82	+7.4	+7.1	-7.1	+1.1	+49	+91	+122	+119	+0.33	+4.9	+18	+2.1	-6.5	+67	+1.7	+2.1	+0.9	-0.7	+3.9	+0.26	+15	+1.08	+0.98	+0.92	\$202	\$378			
29	HOD24V151	+8.5	+5.7	-9.4	-0.5	+49	+90	+113	+85	+0.20	+5.9	+25	+1.4	-2.4	+81	+7.8	+0.3	-1.0	+1.0	-0.3	-0.34	+20	+1.04	+1.04	+1.14	\$178	\$312			

Dir	Dtrs	GL	BW	200W	400W	600W	MCW	MBC	MCH	Milk	SS	DTC	CWT	EMA	Rib	Rump	RBV	IMF	NFI-F	Doc	CS	FA	LA	SA	SA-L	SA	SA-L
+2.5	+3.3	-4.7	+3.8	+52	+95	+122	+103	+0.28	+8.1	+18	+2.3	-5.0	+69	+6.9	+0.1	-0.2	+0.4	+2.7	+0.25	+21	+0.83	+0.96	+1.01	+212	+361		



EBV Quick Reference for MERLEWOOD ANGUS 10TH ANNUAL AUTUMN BULL SALE

Animal Ident	Calving Ease		Birth		Growth			Maternal			Fertility			Carcass			Other			Structural			Indexes			
	Dir	Dtrs	GL	BW	200W	400W	600W	MCW	MBC	MCH	Milk	SS	DTC	CWT	EMA	Rib	Rump	RBV	IMF	NFI-F	Doc	CS	FA	LA	SA	SA-L
30 HOD24V277	-4.2	+5.9	-7.0	+5.8	+69	+121	+157	+158	+0.40	+10.1	+11	+1.1	-1.5	+94	+1.8	-2.9	-3.7	+0.1	+2.9	-0.46	+31	+0.96	+0.94	+0.94	\$187	\$358
31 HOD24V179	+2.6	+1.0	-4.9	+3.7	+62	+109	+143	+127	+0.25	+5.6	+21	+4.2	-6.2	+76	+2.5	-0.2	+1.3	-0.6	+3.0	+0.22	+14	+0.92	+0.88	+1.04	\$228	\$404
32 HOD24V30	-2.7	-3.1	-7.1	+5.3	+61	+108	+134	+124	+0.33	+12.0	+14	+2.3	-4.9	+85	+2.7	-2.3	-3.7	+0.5	+3.1	-0.01	+29	+0.80	+0.64	+0.82	\$208	\$360
33 HOD24V117	+4.6	+5.3	-6.3	+4.8	+65	+120	+162	+166	+0.40	+12.1	+20	+1.3	-2.9	+97	+0.6	-3.7	-7.3	+1.2	+0.4	-0.25	+27	+0.92	+1.30	+1.22	\$177	\$371
34 HOD24V98	+1.7	+5.4	-2.3	+5.4	+65	+114	+137	+127	+0.20	+4.0	+14	+0.9	-5.8	+94	+1.9	-1.3	-1.6	+0.3	+0.9	+0.19	+9	+0.38	+0.52	+0.78	\$226	\$400
35 HOD24V15	+4.5	+6.7	-6.5	+4.1	+57	+114	+139	+113	+0.13	+4.2	+24	+2.4	-4.4	+87	+8.2	-0.4	-0.5	+1.0	-0.3	+0.28	+37	+0.86	+0.74	+0.86	\$223	\$392
36 HOD24V28	+5.0	+5.2	-7.5	+2.5	+62	+111	+135	+116	+0.24	+7.7	+19	+3.5	-3.5	+80	+6.2	+0.6	-0.8	-0.5	+3.3	+0.23	+29	+0.72	+0.90	+0.98	\$219	\$389
37 HOD24V188	+0.5	+0.0	-5.9	+5.5	+52	+87	+116	+98	+0.34	+7.0	+11	+1.0	-4.9	+62	+5.1	+0.9	+0.5	+0.7	+0.7	-0.22	+17	+0.80	+0.70	+0.72	\$192	\$325
Dir	Dtrs	GL	BW	200W	400W	600W	MCW	MBC	MCH	Milk	SS	DTC	CWT	EMA	Rib	Rump	RBV	IMF	NFI-F	Doc	CS	FA	LA	SA	SA-L	
+2.5	+3.3	-4.7	+3.8	+52	+95	+122	+103	+0.28	+8.1	+18	+2.3	-5.0	+69	+6.9	+0.1	-0.2	+0.4	+2.7	+0.25	+21	+0.83	+0.96	+1.01	\$212	+361	

EBV Quick Reference for sires referenced in MERLEWOOD ANGUS 10TH ANNUAL AUTUMN BULL SALE

Animal Ident	Calving Ease		Birth		Growth			Maternal			Fertility			Carcass			Other			Structural			Indexes			
	Dir	Dtrs	GL	BW	200W	400W	600W	MCW	MBC	MCH	Milk	SS	DTC	CWT	EMA	Rib	Rump	RBV	IMF	NFI-F	Doc	CS	FA	LA	SA	SA-L
RS HCAQ90	+9.1	+9.3	-8.1	+0.8	+55	+113	+147	+147	+0.42	+10.0	+21	+1.8	-6.1	+86	-4.3	-0.1	-0.5	-0.8	+2.1	-0.22	+20	+0.74	+1.02	+1.04	\$189	\$392
RS HODR49	+5.0	+8.3	-5.9	+2.6	+52	+98	+128	+109	+0.48	+8.2	+13	+0.9	-5.4	+69	+5.5	+2.9	+2.1	-0.2	+3.1	+0.12	+20	+0.86	+1.04	+1.02	\$231	\$400
RS SJK21S96	+6.0	+4.8	-9.3	+1.1	+53	+98	+129	+113	+0.31	+7.0	+13	+2.1	-4.6	+86	+7.1	-0.3	-2.0	+0.2	+3.3	+0.27	+16	+0.98	+0.86	+0.96	\$213	\$379
RS USA18831388	+5.9	+4.8	-3.9	+2.7	+59	+108	+132	+93	+0.13	+2.7	+28	+1.9	-3.3	+85	+5.5	+0.5	-0.8	+0.6	+0.2	-0.04	+16	+0.96	+0.90	+1.02	\$218	\$366
RS USA18860371	+9.5	+7.3	-2.3	+0.5	+56	+110	+131	+104	+0.35	+5.6	+21	+0.5	-6.1	+86	+8.6	+0.0	+0.9	+0.0	+2.0	+0.26	+24	+0.76	+1.00	+1.06	\$251	\$424
RS USA19405246	+6.0	+6.1	-8.4	+0.8	+54	+103	+125	+79	+0.06	+5.0	+26	+1.9	-3.7	+72	+9.7	+3.0	+2.9	-0.4	+2.7	+0.49	+29	+0.80	+0.94	+0.94	\$239	\$385
RS USA19416968	+6.3	+7.8	-7.2	+3.1	+69	+110	+149	+148	+0.33	+5.3	+18	+1.8	-5.9	+83	+8.2	-1.4	-3.2	+0.1	+2.8	-0.23	+31	+1.36	+1.02	+0.68	\$242	\$440
RS USA19430597	+5.1	+5.6	-7.0	+4.6	+69	+119	+141	+132	+0.26	+7.9	+16	+3.3	-5.3	+75	+11.9	-0.5	-1.6	+0.6	+2.9	+0.13	+19	+0.66	+0.66	+0.78	\$269	\$461
RS USA19923789	-1.5	+5.5	-5.3	+2.2	+71	+128	+160	+158	+0.43	+7.7	+13	+1.6	-2.2	+89	+8.5	-2.3	-5.4	+0.3	+2.4	+0.00	+14	+1.02	+0.92	+0.86	\$209	\$394
RS USA20136857	+2.4	+7.7	-4.7	+5.7	+77	+132	+156	+146	+0.25	+6.0	+16	+1.7	-4.3	+99	+3.8	-2.6	-4.9	+0.4	+0.7	-0.35	+15	+0.60	+0.58	+0.66	\$238	\$430
RS VONQ209	-2.6	+4.6	-5.7	+6.5	+58	+107	+138	+108	+0.30	+8.6	+19	+2.7	-4.3	+76	+5.8	+0.5	+2.2	+0.7	-1.0	-0.36	+15	+0.64	+0.66	+0.86	\$202	\$347
Dir	Dtrs	GL	BW	200W	400W	600W	MCW	MBC	MCH	Milk	SS	DTC	CWT	EMA	Rib	Rump	RBV	IMF	NFI-F	Doc	CS	FA	LA	SA	SA-L	
+2.5	+3.3	-4.7	+3.8	+52	+95	+122	+103	+0.28	+8.1	+18	+2.3	-5.0	+69	+6.9	+0.1	-0.2	+0.4	+2.7	+0.25	+21	+0.83	+0.96	+1.01	\$212	+361	



SALE LOTS

Lot 1 MERLEWOOD KEYSTONE V39 SV HOD24V39

DOB: 25/07/2024 Registration Status: HBR Mating Type: Natural Genetic Status: AMF,CAF,DDF,NHF

RENNYLEA EDMUND E11 PV LANDFALL KEYSTONE K132 PV LANDFALL ARCHER H807 SV Sire: HCAQ90 BOONAROO KEYSTONE Q90 PV BOONAROO GRAVITY G013 PV BOONAROO PRINCESS K243 SV BOONAROO PRINCESS G207 # THOMAS UP RIVER 1614 PV INJEMIRA UP RIVER N154 PV ABERDEEN ESTATE PRINCESS H57 PV Dam: HODR11 MERLEWOOD BURNETTE R11 # EF COMPLEMENT 8088 PV MERLEWOOD BURNETTE N12 # MERLEWOOD BURNETTE L85 #

February 2026 TransTasman Angus Cattle Evaluation

Table with columns: TACE, Dir, Dtrs, GL, BW, 200 W, 400 W, 600 W, MCW, MBC, MCH, Milk, DTC. Rows include EBV, ACC, Perc and SS, Doc, CWT, EMA, Rib, Rump, RBY, IMF, NFI-F, CS, FA, LA.

Selection Indexes table with columns: \$A, \$A-L. Values: \$192, \$411, 73, 16.

Traits Observed: 200WT, 400WT, DOC, Genomics

Notes:

Purchaser: \$

Lot 2 MERLEWOOD BAR DYNAMIC V112 SV HOD24V112

DOB: 07/08/2024 Registration Status: HBR Mating Type: AI Genetic Status: AMF,CAF,DDF,NHF

BASIN PAYWEIGHT 1682 PV DEER VALLEY GROWTH FUND # DEER VALLEY RITA 36113 # Sire: USA19923789 B A R DYNAMIC PV THREE TREES XCEPTIONAL B0048 # B A R BLACKCAP 7235-B0048 # B A R BLACKCAP 3683-745 # MOHNEN SUBSTANTIAL 272 # SITZ STELLAR 726D PV SITZ PRIDE 200B # Dam: HODR89 MERLEWOOD JAPARA R89 # MERLEWOOD UNLIMITED F30 SV MERLEWOOD JAPARA K67 # TE MANIA JAPARA A215 SV

February 2026 TransTasman Angus Cattle Evaluation

Table with columns: TACE, Dir, Dtrs, GL, BW, 200 W, 400 W, 600 W, MCW, MBC, MCH, Milk, DTC. Rows include EBV, ACC, Perc and SS, Doc, CWT, EMA, Rib, Rump, RBY, IMF, NFI-F, CS, FA, LA.

Selection Indexes table with columns: \$A, \$A-L. Values: \$201, \$381, 66, 37.

Traits Observed: GL, 200WT, 400WT, DOC, Genomics

Notes:

Purchaser: \$

Lot 3 MERLEWOOD SUPER TROOPER V115 SV HOD24V115

DOB: 08/08/2024 Registration Status: HBR Mating Type: Natural Genetic Status: AMF,CAF,DDF,NHF

EF COMMANDO 1366 PV MILLAH MURRAH PARATROOPER P15 PV MILLAH MURRAH ELA M9 PV Sire: SJK21S96 GRANITE RIDGE SUPERTROOPER S96 SV GRANITE RIDGE JACKPOT J23 SV GRANITE RIDGE QUIET M102 # GRANITE RIDGE QUIET F28 PV LD CAPITALIST 316 PV MUSGRAVE 316 EXCLUSIVE PV MUSGRAVE PRIM LASSIE 163-386 # Dam: HOD21S89 MERLEWOOD BLACKBIRD S89 # V A R RESERVE 1111 PV MERLEWOOD BLACKBIRD M64 # MERLEWOOD BLACKBIRD H3 #

February 2026 TransTasman Angus Cattle Evaluation

Table with columns: TACE, Dir, Dtrs, GL, BW, 200 W, 400 W, 600 W, MCW, MBC, MCH, Milk, DTC. Rows include EBV, ACC, Perc and SS, Doc, CWT, EMA, Rib, Rump, RBY, IMF, NFI-F, CS, FA, LA.

Selection Indexes table with columns: \$A, \$A-L. Values: \$169, \$321, 88, 80.

Traits Observed: 200WT, 400WT, DOC, Genomics

Notes:

Purchaser: \$

Lot 4 **MERLEWOOD QUIRKY V167 SV** **HOD24V167**

DOB: 15/08/2024 Registration Status: APR Mating Type: Natural Genetic Status: AMF,CAF,DDF,NHF

ABERDEEN ESTATE HOMER H70 PV
 BANQUET NIXON N099 SV
 BANQUET KITE J463 PV
Sire: VONQ209 BANQUET QUIRKY Q209 PV
 ASCOT HALLMARK H147 PV
 BANQUET IRENE N426 PV
 BANQUET IRENE A266 SV

RENNYLEA C277 PV
 IRELANDS FLETCHER F1 PV
 TE MANIA WARGOONA Z31 PV
Dam: HODK35 MERLEWOOD YTHANBRAE K35 (AI) #
 TE MANIA YORKSHIRE Y437 PV
 MERLEWOOD YORKSHIRE E26 #
 LAWSONS FAIR DINKUM B1617 #

February 2026 TransTasman Angus Cattle Evaluation

TACE	Dir	Dtrs	GL	BW	200 W	400 W	600 W	MCW	MBC	MCH	Milk	DTC
EBV	-0.3	+4.1	-6.8	+5.3	+58	+110	+148	+133	+0.40	+6.5	+17	-5.3
ACC	65%	56%	82%	81%	83%	81%	82%	78%	65%	75%	75%	44%
Perc	76	46	19	80	25	13	8	11	17	80	58	42

Selection Indexes

\$A	\$A-L
\$216	\$391
48	29

TACE	SS	Doc	CWT	EMA	Rib	Rump	RBV	IMF	NFI-F	CS	FA	LA
EBV	+2.7	+7	+76	+4.8	+0.9	+2.2	-0.1	+1.8	-0.21	+0.90	+0.96	+0.98
ACC	79%	76%	71%	69%	69%	70%	60%	74%	62%	65%	65%	61%
Perc	32	93	31	74	30	15	74	68	10	63	48	37

Traits Observed: 400WT, DOC, Genomics

Notes:

Purchaser: \$

Lot 5 **MERLEWOOD STEP UP V64 PV** **HOD24V64**

DOB: 30/07/2024 Registration Status: HBR Mating Type: ET Genetic Status: AMF,CAF,DDF,NHF

G A R SURE FIRE SV
 G A R BIG STEP K715 #
 CHAIR ROCK PROPHET 3131 #
Sire: USA19430597 EZAR STEP UP 9178 PV
 EXAR DENVER 2002B #
 BASIN LUCY 4261 #
 BASIN LUCY 1022 #

BANQUET NIXON N099 SV
 BANQUET QUIRKY Q209 PV
 BANQUET IRENE N426 PV
Dam: HOD22T1 MERLEWOOD WILCOOLA T1 SV
 MAR INNOVATION 251 PV
 MERLEWOOD WILCOOLA Q118 #
 MERLEWOOD WILCOOLA N4 SV

February 2026 TransTasman Angus Cattle Evaluation

TACE	Dir	Dtrs	GL	BW	200 W	400 W	600 W	MCW	MBC	MCH	Milk	DTC
EBV	-1.9	+0.9	-9.1	+7.0	+70	+119	+143	+148	+0.36	+9.4	+14	-4.5
ACC	64%	53%	83%	82%	83%	81%	81%	78%	64%	74%	74%	40%
Perc	84	77	4	96	2	4	13	5	26	28	76	60

Selection Indexes

\$A	\$A-L
\$215	\$391
51	29

TACE	SS	Doc	CWT	EMA	Rib	Rump	RBV	IMF	NFI-F	CS	FA	LA
EBV	+3.2	+17	+81	+5.2	-3.0	-3.6	+0.4	+2.3	-0.40	+0.56	+0.62	+0.92
ACC	79%	76%	70%	70%	69%	70%	60%	74%	61%	70%	70%	60%
Perc	18	65	19	69	96	93	46	56	4	7	2	21

Traits Observed: 200WT, 400WT, DOC, Genomics

Notes:

Purchaser: \$

Lot 6 **MERLEWOOD STEP UP V52 SV** **HOD24V52**

DOB: 28/07/2024 Registration Status: HBR Mating Type: AI Genetic Status: AMF,CAF,DDF,NHF

G A R SURE FIRE SV
 G A R BIG STEP K715 #
 CHAIR ROCK PROPHET 3131 #
Sire: USA19430597 EZAR STEP UP 9178 PV
 EXAR DENVER 2002B #
 BASIN LUCY 4261 #
 BASIN LUCY 1022 #

G A R MOMENTUM PV
 LAWSONS MOMENTOUS M518 PV
 LAWSONS AFRICA H229 SV
Dam: HODQ58 MERLEWOOD BLACKBIRD Q58 #
 K C F BENNETT PERFORMER #
 MERLEWOOD BLACKBIRD J46 #
 MERLEWOOD BLACKBIRD F33 #

February 2026 TransTasman Angus Cattle Evaluation

TACE	Dir	Dtrs	GL	BW	200 W	400 W	600 W	MCW	MBC	MCH	Milk	DTC
EBV	-3.4	+0.8	-8.1	+6.1	+73	+125	+158	+151	+0.29	+10.0	+21	-3.3
ACC	66%	56%	83%	82%	83%	82%	82%	79%	68%	78%	75%	43%
Perc	90	77	9	90	1	2	3	4	44	18	26	84

Selection Indexes

\$A	\$A-L
\$228	\$404
35	20

TACE	SS	Doc	CWT	EMA	Rib	Rump	RBV	IMF	NFI-F	CS	FA	LA
EBV	+4.2	+25	+84	+8.1	+0.2	-0.7	+0.0	+3.0	+0.02	+0.94	+0.90	+1.04
ACC	79%	77%	71%	71%	70%	71%	61%	75%	63%	70%	69%	60%
Perc	5	34	14	35	45	59	69	39	26	71	33	55

Traits Observed: GL, 200WT, 400WT, DOC, Genomics

Notes:

Purchaser: \$



SALE LOTS

Lot 7 MERLEWOOD SUPER TROOPER V80 SV HOD24V80

DOB: 01/08/2024 Registration Status: HBR Mating Type: Natural Genetic Status: AMF,CAF,DDF,NHF

EF COMMANDO 1366 PV
MILLAH MURRAH PARATROOPER P15 PV
MILLAH MURRAH ELA M9 PV

EF COMPLEMENT 8088 PV
BLACK ANGUS COMPLEMENT L51 SV
BLACK ANGUS EXPO J119 #

Sire: SJK21S96 GRANITE RIDGE SUPERTROOPER S96 SV
GRANITE RIDGE JACKPOT J23 SV
GRANITE RIDGE QUIET M102 #
GRANITE RIDGE QUIET F28 PV

Dam: HOD21S69 MERLEWOOD ALISON S69 #
MATAURI REALITY 839 #
MERLEWOOD ALISON N7 #
MERLEWOOD ALISON L30 #

February 2026 TransTasman Angus Cattle Evaluation

Table with columns: TACE, Dir, Dtrs, GL, BW, 200 W, 400 W, 600 W, MCW, MBC, MCH, Milk, DTC. Rows include EBV, ACC, Perc and another set of TACE, SS, Doc, CWT, EMA, Rib, Rump, RBY, IMF, NFI-F, CS, FA, LA.

Selection Indexes table with columns \$A, \$A-L. Values: \$226, \$422, 37, 11.

Traits Observed: 200WT, 400WT, DOC, Genomics

Notes:

Purchaser: \$

Lot 8 MERLEWOOD PROLIFIC V71 SV HOD24V71

DOB: 30/07/2024 Registration Status: HBR Mating Type: AI Genetic Status: AMF,CAF,DDF,NHF

S POWERPOINT WS 5503 PV
ELLINGSON PROFOUND 8155 PV
EA ROSETTA 6157 #

WK REPLAY #
ANVIL M077 PV
ANVIL EMBLYNETTE E199 SV

Sire: USA20136857 ELLINGSON PROLIFIC PV
KOU PAL JUNEAU 797 #
EA QUEEN 8070 #
EA QUEEN 2350 #

Dam: HODQ22 MERLEWOOD MILDRED Q22 #
IRELANDS HEIRLOOM H343 SV
MERLEWOOD MILDRED M103 #
FORRES MILDRED F156 #

February 2026 TransTasman Angus Cattle Evaluation

Table with columns: TACE, Dir, Dtrs, GL, BW, 200 W, 400 W, 600 W, MCW, MBC, MCH, Milk, DTC. Rows include EBV, ACC, Perc and another set of TACE, SS, Doc, CWT, EMA, Rib, Rump, RBY, IMF, NFI-F, CS, FA, LA.

Selection Indexes table with columns \$A, \$A-L. Values: \$246, \$417, 18, 13.

Traits Observed: GL, 200WT, 400WT, DOC, Genomics

Notes:

Purchaser: \$

Lot 9 MERLEWOOD SUPER TROOPER V104 SV HOD24V104

DOB: 05/08/2024 Registration Status: HBR Mating Type: Natural Genetic Status: AMF,CAF,DDF,NHF

EF COMMANDO 1366 PV
MILLAH MURRAH PARATROOPER P15 PV
MILLAH MURRAH ELA M9 PV

LD CAPITALIST 316 PV
MILLAH MURRAH CAPITALIST Q21 PV
MILLAH MURRAH PRUE N145 SV

Sire: SJK21S96 GRANITE RIDGE SUPERTROOPER S96 SV
GRANITE RIDGE JACKPOT J23 SV
GRANITE RIDGE QUIET M102 #
GRANITE RIDGE QUIET F28 PV

Dam: HOD21S133 MERLEWOOD RITA S133 #
ANVIL M077 PV
MERLEWOOD RITA P76 #
MERLEWOOD RITA L15 #

February 2026 TransTasman Angus Cattle Evaluation

Table with columns: TACE, Dir, Dtrs, GL, BW, 200 W, 400 W, 600 W, MCW, MBC, MCH, Milk, DTC. Rows include EBV, ACC, Perc and another set of TACE, SS, Doc, CWT, EMA, Rib, Rump, RBY, IMF, NFI-F, CS, FA, LA.

Selection Indexes table with columns \$A, \$A-L. Values: \$206, \$390, 60, 30.

Traits Observed: 200WT, 400WT, DOC, Genomics

Notes:

Purchaser: \$

Lot 10

MERLEWOOD KEYSTONE V149 PV

HOD24V149

DOB: 12/08/2024

Registration Status: **HBR**

Mating Type: **Natural**

Genetic Status: **AMF,CAF,DDF,NHF**

RENNYLEA EDMUND E11 PV
 LANDFALL KEYSTONE K132 PV
 LANDFALL ARCHER H807 SV

CONNEALY CAPITALIST 028 #
 LD CAPITALIST 316 PV
 LD DIXIE ERICA 2053 #
 MILLAH MURRAH KINGDOM K35 PV
 MERLEWOOD BEEAC M82 #
 MERLEWOOD BEEAC H7 #

Sire: HCAQ90 BOONAROO KEYSTONE Q90 PV
 BOONAROO GRAVITY G013 PV
 BOONAROO PRINCESS K243 SV
 BOONAROO PRINCESS G207 #

Dam: HODP9 MERLEWOOD BEEAC P9 SV

February 2026 TransTasman Angus Cattle Evaluation

TACE	Dir	Dtrs	GL	BW	200 W	400 W	600 W	MCW	MBC	MCH	Milk	DTC
EBV	+8.0	+8.1	-5.4	+3.5	+44	+95	+116	+119	+0.59	+6.3	+12	-5.1
ACC	66%	59%	81%	81%	82%	81%	81%	78%	70%	79%	75%	46%
Perc	9	8	38	43	84	48	64	26	2	83	86	46

TACE	SS	Doc	CWT	EMA	Rib	Rump	RBV	IMF	NFI-F	CS	FA	LA
EBV	+2.9	+9	+58	+4.9	+0.2	+0.9	+0.2	+2.4	+0.23	+0.78	+1.10	+0.82
ACC	79%	76%	70%	69%	68%	70%	60%	73%	62%	69%	68%	66%
Perc	26	89	80	73	45	31	58	53	49	38	79	6

Selection Indexes

\$A	\$A-L
\$187	\$363
78	52

Traits Observed: 200WT, 400WT, DOC, Genomics

Notes:

Purchaser: \$

Lot 11

MERLEWOOD STEP UP V69 SV

HOD24V69

DOB: 30/07/2024

Registration Status: **HBR**

Mating Type: **AI**

Genetic Status: **AMF,CAF,DDF,NHF**

G A R SURE FIRE SV
 G A R BIG STEP K715 #
 CHAIR ROCK PROPHET 3131 #
Sire: USA19430597 EZAR STEP UP 9178 PV
 EXAR DENVER 2002B #
 BASIN LUCY 4261 #
 BASIN LUCY 1022 #

TUWHARETOA REGENT D145 PV
 TE MANIA JARCEVO J545 PV
 TE MANIA LOWAN Z74 PV
Dam: HODN53 MERLEWOOD LEONIE N53 #
 G A R PREDESTINED #
 MERLEWOOD YORKSHIRE E21 #
 LAWSONS YIELD GRADE A555 SV

February 2026 TransTasman Angus Cattle Evaluation

TACE	Dir	Dtrs	GL	BW	200 W	400 W	600 W	MCW	MBC	MCH	Milk	DTC
EBV	+1.2	+1.2	-4.6	+6.5	+54	+93	+113	+108	+0.33	+7.5	+16	-2.3
ACC	64%	54%	82%	82%	83%	82%	81%	79%	66%	76%	75%	41%
Perc	66	74	51	94	40	55	70	42	33	63	63	94

TACE	SS	Doc	CWT	EMA	Rib	Rump	RBV	IMF	NFI-F	CS	FA	LA
EBV	+3.2	+20	+55	+14.6	-1.8	-2.9	+1.3	+2.8	+0.38	+0.92	+0.88	+0.84
ACC	79%	76%	71%	70%	69%	70%	60%	74%	61%	68%	68%	59%
Perc	18	53	85	2	86	88	8	44	65	67	29	8

Selection Indexes

\$A	\$A-L
\$201	\$339
66	70

Traits Observed: GL, 200WT, 400WT, DOC, Genomics

Notes:

Purchaser: \$

Lot 12

MERLEWOOD STEP UP V72 PV

HOD24V72

DOB: 30/07/2024

Registration Status: **HBR**

Mating Type: **ET**

Genetic Status: **AMF,CAF,DDF,NHF**

G A R SURE FIRE SV
 G A R BIG STEP K715 #
 CHAIR ROCK PROPHET 3131 #
Sire: USA19430597 EZAR STEP UP 9178 PV
 EXAR DENVER 2002B #
 BASIN LUCY 4261 #
 BASIN LUCY 1022 #

BANQUET NIXON N099 SV
 BANQUET QUIRKY Q209 PV
 BANQUET IRENE N426 PV
Dam: HOD22T1 MERLEWOOD WILCOOLA T1 SV
 MAR INNOVATION 251 PV
 MERLEWOOD WILCOOLA Q118 #
 MERLEWOOD WILCOOLA N4 SV

February 2026 TransTasman Angus Cattle Evaluation

TACE	Dir	Dtrs	GL	BW	200 W	400 W	600 W	MCW	MBC	MCH	Milk	DTC
EBV	+3.5	+9.4	-10.2	+3.8	+68	+116	+156	+150	+0.27	+9.0	+17	-3.7
ACC	65%	54%	83%	82%	83%	81%	81%	78%	65%	74%	74%	40%
Perc	46	3	2	50	4	6	4	4	50	35	56	77

TACE	SS	Doc	CWT	EMA	Rib	Rump	RBV	IMF	NFI-F	CS	FA	LA
EBV	+2.5	+11	+88	+4.7	-1.6	-1.8	+0.4	+1.1	-0.37	+0.72	+0.68	+0.76
ACC	79%	76%	70%	70%	69%	70%	60%	74%	61%	69%	69%	59%
Perc	38	86	9	75	83	76	46	83	5	26	4	3

Selection Indexes

\$A	\$A-L
\$217	\$409
47	17

Traits Observed: 200WT, 400WT, DOC, Genomics

Notes:

Purchaser: \$

Lot 13 **MERLEWOOD STELLAR V199 SV** **HOD24V199**

DOB: 24/08/2024 Registration Status: **HBR** Mating Type: **Natural** Genetic Status: **AMF,CAF,DDF,NHF**

MOHNEN SUBSTANTIAL 272 #
SITZ STELLAR 726D PV
SITZ PRIDE 200B #

Sire: **HODR49 MERLEWOOD STELLAR R49 SV**
B/R AMBUSH 28 #
MERLEWOOD B/R AMBUSH E2 #
LAWSONS NEW DESIGN 1407 Z1140 #

CHERYLTON STEWIE D19 PV
RAFF LEGAND L178 PV
RAFF BLACKBIRD H4 PV

Dam: **HODQ50 MERLEWOOD RITA Q50 #**
MERLEWOOD EMPEROR H43 SV
MERLEWOOD RITA L136 #
MERLEWOOD RITA F6 #

February 2026 TransTasman Angus Cattle Evaluation

TACE	Dir	Dtrs	GL	BW	200 W	400 W	600 W	MCW	MBC	MCH	Milk	DTC
EBV	+3.0	+6.5	-4.7	+3.1	+54	+104	+136	+113	+0.31	+7.5	+20	-4.5
ACC	64%	56%	82%	81%	83%	81%	81%	78%	64%	75%	74%	41%
Perc	51	19	49	35	42	24	22	33	38	63	30	60

TACE	SS	Doc	CWT	EMA	Rib	Rump	RBV	IMF	NFI-F	CS	FA	LA
EBV	+3.4	+22	+76	+2.5	+0.7	+0.9	-0.1	+0.9	+0.13	+0.96	+0.94	+0.98
ACC	78%	75%	69%	68%	68%	69%	58%	73%	61%	64%	64%	59%
Perc	14	43	30	91	34	31	74	86	37	74	43	37

Selection Indexes

\$A	\$A-L
\$194	\$357
72	57

Traits Observed: 200WT, 400WT, DOC, Genomics

Notes:

Purchaser: \$

Lot 14 **MERLEWOOD RAWHIDE V84 #** **HOD24V84**

DOB: 02/08/2024 Registration Status: **HBR** Mating Type: **AI** Genetic Status: **AMFU,CAFU,DDFU,NHFU**

BASIN PAYWEIGHT 1682 PV
POSS MAVERICK PV
POSS PRIDE 5163 #

Sire: **USA19416968 POSS RAWHIDE PV**
POSS EASY IMPACT 0119 #
POSS BLUEBLOOD 6502 #
POSS BLUEBLOOD 920 #

WK REPLAY #
ANVIL M077 PV
ANVIL EMBLYNETTE E199 SV

Dam: **HODQ51 MERLEWOOD BLACKBIRD Q51 #**
MERLEWOOD BENNETT TOTAL J2 SV
MERLEWOOD BLACKBIRD M4 #
MERLEWOOD BLACKBIRD K44 (AI) #

February 2026 TransTasman Angus Cattle Evaluation

TACE	Dir	Dtrs	GL	BW	200 W	400 W	600 W	MCW	MBC	MCH	Milk	DTC
EBV	+2.6	+5.1	-5.1	+4.0	+56	+91	+122	+107	+0.33	+6.5	+16	-6.5
ACC	56%	46%	82%	67%	70%	70%	68%	67%	42%	45%	62%	37%
Perc	55	34	43	54	31	60	51	43	33	79	62	19

TACE	SS	Doc	CWT	EMA	Rib	Rump	RBV	IMF	NFI-F	CS	FA	LA
EBV	+2.4	+17	+67	+7.0	-1.0	-2.2	+0.3	+2.6	+0.06	-	-	-
ACC	65%	63%	61%	60%	61%	61%	54%	63%	50%	-	-	-
Perc	42	64	58	48	72	81	52	48	30	-	-	-

Selection Indexes

\$A	\$A-L
\$220	\$377
44	40

Traits Observed: GL, 200WT, 400WT, DOC

Notes:

Purchaser: \$

Lot 15 **MERLEWOOD QUIRKY V102 SV** **HOD24V102**

DOB: 05/08/2024 Registration Status: **HBR** Mating Type: **Natural** Genetic Status: **AMF,CAF,DDF,NHF**

ABERDEEN ESTATE HOMER H70 PV
BANQUET NIXON N099 SV
BANQUET KITE J463 PV

Sire: **VONQ209 BANQUET QUIRKY Q209 PV**
ASCOT HALLMARK H147 PV
BANQUET IRENE N426 PV
BANQUET IRENE A266 SV

CONNELLY IMPRESSION #
MAR INNOVATION 251 PV
MAR FINAL KAHUNA 856 #

Dam: **HODQ136 MERLEWOOD EMPRESS Q136 #**
PATHFINDER GENESIS G357 PV
MERLEWOOD EMPRESS N79 SV
MERLEWOOD EMPRESS G1 #

February 2026 TransTasman Angus Cattle Evaluation

TACE	Dir	Dtrs	GL	BW	200 W	400 W	600 W	MCW	MBC	MCH	Milk	DTC
EBV	+1.8	+4.7	-5.4	+5.0	+49	+94	+113	+91	+0.21	+7.1	+21	-6.3
ACC	65%	55%	81%	81%	83%	81%	81%	78%	65%	74%	74%	44%
Perc	61	39	38	75	66	51	70	69	68	70	25	22

TACE	SS	Doc	CWT	EMA	Rib	Rump	RBV	IMF	NFI-F	CS	FA	LA
EBV	+1.7	+12	+73	+6.6	+1.1	+3.2	+1.3	-1.2	+0.40	+0.66	+0.84	+0.96
ACC	79%	76%	70%	69%	69%	70%	60%	73%	61%	66%	66%	63%
Perc	68	81	39	53	26	8	8	99	67	17	21	31

Selection Indexes

\$A	\$A-L
\$216	\$361
49	54

Traits Observed: 200WT, 400WT, DOC, Genomics

Notes:

Purchaser: \$

Lot 16 **MERLEWOOD BAR DYNAMIC V118 SV** **HOD24V118**

DOB: 08/08/2024 Registration Status: APR Mating Type: AI Genetic Status: AMFU,CAFU,DDF,NHF

BASIN PAYWEIGHT 1682 PV
 DEER VALLEY GROWTH FUND #
 DEER VALLEY RITA 36113 #
Sire: USA19923789 B A R DYNAMIC PV
 THREE TREES XCEPTIONAL B0048 #
 B A R BLACKCAP 7235-B0048 #
 B A R BLACKCAP 3683-745 #

MATAURI REALITY 839 #
 CLUNIE RANGE LEGEND L348 PV
 ABERDEEN ESTATE LAURA J81 PV
Dam: HODR85 MERLEWOOD COOLANNA R85 #
 IRELANDS HEMSWORTH H160 SV
 MERLEWOOD COOLANA K88 #
 COOLANA G643 #

February 2026 TransTasman Angus Cattle Evaluation

TACE	Dir	Dtrs	GL	BW	200 W	400 W	600 W	MCW	MBC	MCH	Milk	DTC
EBV	-6.2	+4.6	-3.3	+4.4	+59	+104	+124	+112	+0.24	+6.5	+15	-1.8
ACC	64%	54%	83%	81%	82%	80%	81%	78%	65%	75%	74%	41%
Perc	96	40	71	63	19	24	45	35	60	80	68	97

TACE	SS	Doc	CWT	EMA	Rib	Rump	RBY	IMF	NFI-F	CS	FA	LA
EBV	+2.9	+21	+68	+10.6	-4.1	-7.2	+1.1	+1.5	-0.41	+0.72	+0.78	+0.96
ACC	78%	74%	69%	69%	68%	69%	59%	73%	60%	71%	71%	59%
Perc	26	50	55	14	99	99	13	75	4	26	12	31

Selection Indexes

\$A	\$A-L
\$165	\$293
90	91

Traits Observed: GL, 200WT, 400WT, DOC, Genomics

Notes:

Purchaser: \$

Lot 17 **MERLEWOOD BRICKYARD V55 SV** **HOD24V55**

DOB: 29/07/2024 Registration Status: HBR Mating Type: AI Genetic Status: AMF,CAF,DDF,NHF

HOOVER DAM #
 S S NIAGARA Z29 SV
 JET S S X144 #
Sire: USA18860371 S S BRICKYARD PV
 WOODHILL DAYBREAK U280-X20 #
 LUCY S S C109 #
 LUCY S S X143 #

S A V RENOWN 3439 PV
 S A V ABUNDANCE 6117 PV
 S A V EMBLYNETTE 7563 #
Dam: HOD22T147 MERLEWOOD SHORITA T147 #
 MATAURI OUTLIER F031 SV
 MERLEWOOD SHORITA L66 SV
 MERLEWOOD PAYLOAD E9 #

February 2026 TransTasman Angus Cattle Evaluation

TACE	Dir	Dtrs	GL	BW	200 W	400 W	600 W	MCW	MBC	MCH	Milk	DTC
EBV	+6.5	+1.1	-3.3	+2.0	+55	+100	+126	+119	+0.28	+6.3	+16	-3.4
ACC	66%	56%	82%	82%	83%	81%	81%	78%	63%	74%	75%	42%
Perc	19	75	71	16	36	33	41	25	47	83	61	82

TACE	SS	Doc	CWT	EMA	Rib	Rump	RBY	IMF	NFI-F	CS	FA	LA
EBV	+0.4	+27	+88	+4.4	-1.4	+0.0	+0.7	+0.2	-0.18	+0.72	+1.08	+1.10
ACC	79%	76%	70%	70%	69%	70%	61%	74%	60%	69%	69%	64%
Perc	96	26	9	78	80	46	28	95	12	26	76	73

Selection Indexes

\$A	\$A-L
\$185	\$343
79	67

Traits Observed: GL, 200WT, 400WT, DOC, Genomics

Notes:

Purchaser: \$

Lot 18 **MERLEWOOD SUPER TROOPER V31 SV** **HOD24V31**

DOB: 23/07/2024 Registration Status: HBR Mating Type: Natural Genetic Status: AMF,CAF,DDF,NHF

EF COMMANDO 1366 PV
 MILLAH MURRAH PARATROOPER P15 PV
 MILLAH MURRAH ELA M9 PV
Sire: SJK21S96 GRANITE RIDGE SUPERTROOPER S96 SV
 GRANITE RIDGE JACKPOT J23 SV
 GRANITE RIDGE QUIET M102 #
 GRANITE RIDGE QUIET F28 PV

WK REPLAY #
 ANVIL M077 PV
 ANVIL EMBLYNETTE E199 SV
Dam: HOD21S53 MERLEWOOD BURNETTE S53 #
 ARDROSSAN EQUATOR A241 PV
 MERLEWOOD BURNETTE H27 #
 FORRES BURNETTE D119 #

February 2026 TransTasman Angus Cattle Evaluation

TACE	Dir	Dtrs	GL	BW	200 W	400 W	600 W	MCW	MBC	MCH	Milk	DTC
EBV	+4.3	+1.8	-8.3	+3.3	+58	+101	+125	+118	+0.42	+9.3	+4	-8.5
ACC	64%	56%	81%	80%	82%	80%	80%	78%	67%	76%	73%	42%
Perc	39	69	8	39	26	30	42	27	14	29	99	3

TACE	SS	Doc	CWT	EMA	Rib	Rump	RBY	IMF	NFI-F	CS	FA	LA
EBV	+2.9	+15	+80	+3.2	+0.5	-2.0	-0.2	+2.2	+0.53	+0.86	+0.66	+0.76
ACC	78%	75%	69%	67%	67%	68%	57%	72%	61%	65%	65%	63%
Perc	26	74	22	87	38	78	79	58	79	55	3	3

Selection Indexes

\$A	\$A-L
\$225	\$403
38	21

Traits Observed: 200WT, 400WT, DOC, Genomics

Notes:

Purchaser: \$



SALE LOTS

Lot 19 MERLEWOOD QUIRKY V208 SV HOD24V208

DOB: 25/08/2024 Registration Status: HBR Mating Type: Natural Genetic Status: AMF,CAF,DDF,NHF

ABERDEEN ESTATE HOMER H70 PV BANQUET NIXON N099 SV BANQUET KITE J463 PV Sire: VONQ209 BANQUET QUIRKY Q209 PV ASCOT HALLMARK H147 PV BANQUET IRENE N426 PV BANQUET IRENE A266 SV TC ABERDEEN 759 SV BOWMONT ABERDEEN J302 PV THE GRANGE BLACKBIRD E172 PV Dam: HODP21 MERLEWOOD GLENAROUA P21 # TE MANIA JARCEVO J545 PV MERLEWOOD GLENAROUA M30 # MERLEWOOD GLENAROUA J49 #

February 2026 TransTasman Angus Cattle Evaluation

Table with columns: TACE, Dir, Dtrs, GL, BW, 200 W, 400 W, 600 W, MCW, MBC, MCH, Milk, DTC. Rows include EBV, ACC, Perc and SS, Doc, CWT, EMA, Rib, Rump, RBV, IMF, NFI-F, CS, FA, LA.

Selection Indexes table with columns: \$A, \$A-L. Values: \$216, \$384, 49, 35.

Traits Observed: 200WT, 400WT, DOC, Genomics

Notes:

Purchaser: \$

Lot 20 MERLEWOOD RAWHIDE V155 PV HOD24V155

DOB: 13/08/2024 Registration Status: HBR Mating Type: ET Genetic Status: AMF,CAF,DDF,NHF

BASIN PAYWEIGHT 1682 PV POSS MAVERICK PV POSS PRIDE 5163 # Sire: USA19416968 POSS RAWHIDE PV POSS EASY IMPACT 0119 # POSS BLUEBLOOD 6502 # POSS BLUEBLOOD 920 # G A R SURE FIRE 6404 # GB FIREBALL 672 PV GB ANTICIPATION 432 # Dam: BBB22T211 CIRCLE 8 ROSEBUD T211 PV RENNYLEA EDMUND E11 PV CIRCLE 8 E11 ROSEBUD L122 PV CIRCLE 8 ROSEBUD H324 PV

February 2026 TransTasman Angus Cattle Evaluation

Table with columns: TACE, Dir, Dtrs, GL, BW, 200 W, 400 W, 600 W, MCW, MBC, MCH, Milk, DTC. Rows include EBV, ACC, Perc and SS, Doc, CWT, EMA, Rib, Rump, RBV, IMF, NFI-F, CS, FA, LA.

Selection Indexes table with columns: \$A, \$A-L. Values: \$231, \$414, 32, 15.

Traits Observed: 200WT, 400WT, DOC, Genomics

Notes:

Purchaser: \$

Lot 21 MERLEWOOD AVENGER V63 SV HOD24V63

DOB: 30/07/2024 Registration Status: HBR Mating Type: AI Genetic Status: AMF,CAF,DDF,NHF

MOGCK BULLSEYE PV BRUNS BLASTER PV BALDRIDGE BLACKBIRD 11 BAF # Sire: USA18831338 MUSGRAVE AVENGER PV BARSTOW CASH # MUSGRAVE PRIDE 1532 # MCATL PRIDE ROSIE 926-6222 # LANDFALL KEYSTONE K132 PV BOONAROO KEYSTONE Q90 PV BOONAROO PRINCESS K243 SV Dam: HOD22T106 MERLEWOOD MILDRED T106 # IRELANDS HEIRLOOM H343 SV MERLEWOOD MILDRED M103 # FORRES MILDRED F156 #

February 2026 TransTasman Angus Cattle Evaluation

Table with columns: TACE, Dir, Dtrs, GL, BW, 200 W, 400 W, 600 W, MCW, MBC, MCH, Milk, DTC. Rows include EBV, ACC, Perc and SS, Doc, CWT, EMA, Rib, Rump, RBV, IMF, NFI-F, CS, FA, LA.

Selection Indexes table with columns: \$A, \$A-L. Values: \$165, \$301, 90, 89.

Traits Observed: GL, 200WT, 400WT, DOC, Genomics

Notes:

Purchaser: \$

Lot 22 **MERLEWOOD STELLAR V114 SV** **HOD24V114**

DOB: 07/08/2024 Registration Status: HBR Mating Type: Natural Genetic Status: AMF,CAF,DDF,NHF

MOHNEN SUBSTANTIAL 272 #
SITZ STELLAR 726D PV
SITZ PRIDE 200B #

CONNEALY IMPRESSION #
MAR INNOVATION 251 PV
MAR FINAL KAHUNA 856 #
PATHFINDER GENESIS G357 PV
MERLEWOOD EMPRESS N79 SV
MERLEWOOD EMPRESS G1 #

Sire: HODR49 MERLEWOOD STELLAR R49 SV
B/R AMBUSH 28 #
MERLEWOOD B/R AMBUSH E2 #
LAWSONS NEW DESIGN 1407 Z1140 #

Dam: HODQ142 MERLEWOOD EMPRESS Q142 #

February 2026 TransTasman Angus Cattle Evaluation

TACE	Dir	Dtrs	GL	BW	200 W	400 W	600 W	MCW	MBC	MCH	Milk	DTC
EBV	+4.4	+7.3	-3.6	+4.0	+61	+108	+136	+124	+0.16	+7.5	+21	-7.0
ACC	64%	55%	81%	80%	82%	80%	81%	78%	64%	75%	73%	43%
Perc	38	13	67	54	16	16	21	20	81	63	22	13

TACE	SS	Doc	CWT	EMA	Rib	Rump	RBV	IMF	NFI-F	CS	FA	LA
EBV	+2.8	+16	+84	+5.6	+2.8	+3.8	+0.4	-0.2	+0.24	+0.82	+0.96	+0.86
ACC	78%	76%	69%	68%	68%	69%	59%	73%	61%	66%	67%	63%
Perc	28	68	14	65	6	5	46	97	50	47	48	11

Selection Indexes

\$A	\$A-L
\$242	\$428
21	9

Traits Observed: GL, 200WT, 400WT, DOC, Genomics

Notes:

Purchaser: \$

Lot 23 **MERLEWOOD STELLAR V237 SV** **HOD24V237**

DOB: 03/09/2024 Registration Status: HBR Mating Type: Natural Genetic Status: AMF,CAF,DDF,NHF

MOHNEN SUBSTANTIAL 272 #
SITZ STELLAR 726D PV
SITZ PRIDE 200B #

HIGHLANDER OF STERN AB #
BRAVEHEART OF STERN SV
STERN 3886 #
IRELANDS HEIRLOOM H343 SV
MERLEWOOD BLACKBIRD M66 SV
MERLEWOOD BLACKBIRD F3 #

Sire: HODR49 MERLEWOOD STELLAR R49 SV
B/R AMBUSH 28 #
MERLEWOOD B/R AMBUSH E2 #
LAWSONS NEW DESIGN 1407 Z1140 #

Dam: HODP130 MERLEWOOD BLACKBIRD P130 #

February 2026 TransTasman Angus Cattle Evaluation

TACE	Dir	Dtrs	GL	BW	200 W	400 W	600 W	MCW	MBC	MCH	Milk	DTC
EBV	+4.4	+7.1	-6.2	+4.4	+53	+107	+154	+140	+0.36	+8.8	+19	-2.0
ACC	64%	56%	81%	81%	82%	80%	81%	78%	65%	74%	73%	44%
Perc	38	15	26	63	45	18	5	8	26	38	36	96

TACE	SS	Doc	CWT	EMA	Rib	Rump	RBV	IMF	NFI-F	CS	FA	LA
EBV	+2.0	+20	+84	+5.3	-0.8	-3.0	+0.8	+1.6	+0.02	+0.80	+0.98	+1.02
ACC	78%	75%	69%	68%	68%	69%	59%	73%	61%	66%	66%	63%
Perc	58	53	14	68	68	89	24	73	26	42	53	49

Selection Indexes

\$A	\$A-L
\$178	\$352
84	61

Traits Observed: 200WT, 400WT, DOC, Genomics

Notes:

Purchaser: \$

Lot 24 **MERLEWOOD STELLAR V239 SV** **HOD24V239**

DOB: 03/09/2024 Registration Status: HBR Mating Type: Natural Genetic Status: AMF,CAF,DDF,NHF

MOHNEN SUBSTANTIAL 272 #
SITZ STELLAR 726D PV
SITZ PRIDE 200B #

IRELANDS HIERARCHY H152 PV
IRELANDS LOWANNA L72 SV
IRELANDS QUIET E107 #
CARABAR DOCKLANDS D62 PV
MERLEWOOD JEDDA L54 PV
MERLEWOOD WILCOOLA F43 SV

Sire: HODR49 MERLEWOOD STELLAR R49 SV
B/R AMBUSH 28 #
MERLEWOOD B/R AMBUSH E2 #
LAWSONS NEW DESIGN 1407 Z1140 #

Dam: HODP23 MERLEWOOD LOWANNA P23 #

February 2026 TransTasman Angus Cattle Evaluation

TACE	Dir	Dtrs	GL	BW	200 W	400 W	600 W	MCW	MBC	MCH	Milk	DTC
EBV	+4.5	+0.2	-6.9	+3.4	+50	+87	+115	+75	+0.45	+8.0	+21	-4.5
ACC	65%	57%	82%	81%	83%	81%	82%	79%	66%	76%	75%	43%
Perc	37	81	18	41	62	73	65	87	10	54	28	60

TACE	SS	Doc	CWT	EMA	Rib	Rump	RBV	IMF	NFI-F	CS	FA	LA
EBV	+3.0	+22	+65	+11.1	-1.4	-2.0	+1.3	+3.5	+0.25	+0.66	+0.90	+0.88
ACC	79%	77%	71%	69%	69%	70%	59%	74%	62%	64%	64%	60%
Perc	23	46	62	12	80	78	8	29	51	17	33	13

Selection Indexes

\$A	\$A-L
\$240	\$368
23	48

Traits Observed: 200WT, 400WT, DOC, Genomics

Notes:

Purchaser: \$

Lot 25 **MERLEWOOD RAWHIDE V153 PV** **HOD24V153**

DOB: 13/08/2024 Registration Status: HBR Mating Type: ET Genetic Status: AMF,CAF,DDF,NHF

BASIN PAYWEIGHT 1682 PV
POSS MAVERICK PV
POSS PRIDE 5163 #
Sire: USA19416968 POSS RAWHIDE PV
POSS EASY IMPACT 0119 #
POSS BLUEBLOOD 6502 #
POSS BLUEBLOOD 920 #

G A R SURE FIRE 6404 #
GB FIREBALL 672 PV
GB ANTICIPATION 432 #
Dam: BBB22T211 CIRCLE 8 ROSEBUD T211 PV
RENNYLEA EDMUND E11 PV
CIRCLE 8 E11 ROSEBUD L122 PV
CIRCLE 8 ROSEBUD H324 PV

February 2026 TransTasman Angus Cattle Evaluation

TACE	Dir	Dtrs	GL	BW	200 W	400 W	600 W	MCW	MBC	MCH	Milk	DTC
EBV	-5.7	-5.1	-3.8	+6.3	+62	+109	+149	+147	+0.32	+6.8	+17	-7.7
ACC	68%	58%	83%	82%	83%	82%	82%	79%	65%	75%	76%	44%
Perc	95	97	64	92	13	14	7	5	36	76	51	7

TACE	SS	Doc	CWT	EMA	Rib	Rump	RBV	IMF	NFI-F	CS	FA	LA
EBV	+2.0	+29	+80	+11.8	-1.3	-3.0	+0.7	+2.5	+0.04	+1.20	+1.08	+0.84
ACC	80%	78%	72%	72%	71%	72%	63%	76%	64%	70%	70%	61%
Perc	58	21	21	9	78	89	28	51	28	97	76	8

Selection Indexes

\$A	\$A-L
\$227	\$397
36	25

Traits Observed: 200WT, 400WT, DOC, Genomics

Notes:

Purchaser: \$

Lot 26 **MERLEWOOD KEYSTONE V76 SV** **HOD24V76**

DOB: 31/07/2024 Registration Status: HBR Mating Type: Natural Genetic Status: AMF,CAF,DDF,NHF

RENNYLEA EDMUND E11 PV
LANDFALL KEYSTONE K132 PV
LANDFALL ARCHER H807 SV
Sire: HCAQ90 BOONAROO KEYSTONE Q90 PV
BOONAROO GRAVITY G013 PV
BOONAROO PRINCESS K243 SV
BOONAROO PRINCESS G207 #

IRELANDS HIERARCHY H152 PV
IRELANDS LOWANNA L72 SV
IRELANDS QUIET E107 #
Dam: HODN73 MERLEWOOD WILCOOLA N73 #
MATAURI REALITY 839 #
MERLEWOOD WILCOOLA K1 (AI) SV
MERLEWOOD WILCOOLA H22 #

February 2026 TransTasman Angus Cattle Evaluation

TACE	Dir	Dtrs	GL	BW	200 W	400 W	600 W	MCW	MBC	MCH	Milk	DTC
EBV	+6.4	+4.1	-8.9	+1.8	+55	+105	+132	+149	+0.43	+6.6	+13	-3.3
ACC	65%	57%	81%	81%	83%	81%	81%	79%	68%	78%	75%	44%
Perc	20	46	5	14	39	21	28	4	12	78	80	84

TACE	SS	Doc	CWT	EMA	Rib	Rump	RBV	IMF	NFI-F	CS	FA	LA
EBV	+1.8	+14	+66	+1.6	+0.1	+1.4	+0.2	+0.1	-0.33	+0.82	+1.04	+0.90
ACC	79%	76%	71%	69%	69%	70%	60%	74%	63%	64%	64%	63%
Perc	65	75	59	95	47	24	58	95	6	47	67	17

Selection Indexes

\$A	\$A-L
\$161	\$347
92	65

Traits Observed: 200WT, 400WT, DOC, Genomics

Notes:

Purchaser: \$

Lot 27 **MERLEWOOD PROLIFIC V88 PV** **HOD24V88**

DOB: 03/08/2024 Registration Status: HBR Mating Type: ET Genetic Status: AMF,CAF,DDF,NHF

S POWERPOINT WS 5503 PV
ELLINGSON PROFOUND 8155 PV
EA ROSETTA 6157 #
Sire: USA20136857 ELLINGSON PROLIFIC PV
KOU PAL JUNE AU 797 #
EA QUEEN 8070 #
EA QUEEN 2350 #

G A R SURE FIRE 6404 #
GB FIREBALL 672 PV
GB ANTICIPATION 432 #
Dam: BBB22T161 CIRCLE 8 ROSEBUD T161 PV
H P C A PROCEED PV
CIRCLE 8 ROSEBUD M142 PV
KO ROSEBUD K13 PV

February 2026 TransTasman Angus Cattle Evaluation

TACE	Dir	Dtrs	GL	BW	200 W	400 W	600 W	MCW	MBC	MCH	Milk	DTC
EBV	+5.4	+9.5	-7.9	+1.7	+47	+87	+102	+89	+0.22	+5.7	+20	-5.7
ACC	66%	56%	83%	82%	83%	81%	81%	78%	64%	73%	74%	42%
Perc	28	3	10	13	74	73	87	71	66	89	31	33

TACE	SS	Doc	CWT	EMA	Rib	Rump	RBV	IMF	NFI-F	CS	FA	LA
EBV	-0.6	+9	+62	+3.3	+0.3	-1.4	-0.4	+5.1	+0.46	+0.78	+0.66	+0.72
ACC	80%	76%	71%	71%	70%	71%	61%	75%	62%	72%	72%	60%
Perc	99	90	70	86	43	70	86	7	73	38	3	2

Selection Indexes

\$A	\$A-L
\$217	\$367
47	49

Traits Observed: 200WT, 400WT, DOC, Genomics

Notes:

Purchaser: \$

Lot 28

MERLEWOOD RAWHIDE V82 SV

HOD24V82

DOB: 01/08/2024

Registration Status: HBR

Mating Type: AI

Genetic Status: AMF,CAF,DDF,NHF

BASIN PAYWEIGHT 1682 PV
POSS MAVERICK PV
POSS PRIDE 5163 #

MATAURI REALITY 839 #
CLUNIE RANGE LEGEND L348 PV
ABERDEEN ESTATE LAURA J81 PV

Sire: USA19416968 POSS RAWHIDE PV

Dam: HODQ15 MERLEWOOD WILCOOLA Q15 #

POSS EASY IMPACT 0119 #
POSS BLUEBLOOD 6502 #
POSS BLUEBLOOD 920 #

MILLAH MURRAH KINGDOM K35 PV
MERLEWOOD WILCOOLA N80 #
MERLEWOOD WILCOOLA F29 #

February 2026 TransTasman Angus Cattle Evaluation

Table with columns: TACE, Dir, Dtrs, GL, BW, 200 W, 400 W, 600 W, MCW, MBC, MCH, Milk, DTC. Rows include EBV, ACC, Perc and a second set of TACE, SS, Doc, CWT, EMA, Rib, Rump, RBY, IMF, NFI-F, CS, FA, LA.

Selection Indexes

Table with columns: \$A, \$A-L. Rows: \$202, \$378, 64, 39.

Traits Observed: GL, 200WT, 400WT, DOC, Genomics

Notes:

Purchaser: \$

Lot 29

MERLEWOOD SUPER TROOPER V151 SV

HOD24V151

DOB: 12/08/2024

Registration Status: HBR

Mating Type: Natural

Genetic Status: AMF,CAF,DDF,NHF

EF COMMANDO 1366 PV
MILLAH MURRAH PARATROOPER P15 PV
MILLAH MURRAH ELA M9 PV

BRUNS BLASTER PV
MUSGRAVE AVENGER PV
MUSGRAVE PRIDE 1532 #

Sire: SJK21S96 GRANITE RIDGE SUPERTROOPER S96 SV

Dam: HOD21S26 MERLEWOOD MILDRED S26 #

GRANITE RIDGE JACKPOT J23 SV
GRANITE RIDGE QUIET M102 #
GRANITE RIDGE QUIET F28 PV

QHF WWA BLACK ONYX 5Q11 SV
MERLEWOOD FORRES MILDRED Q72 #
MERLEWOOD FORRES MILDRED K22 #

February 2026 TransTasman Angus Cattle Evaluation

Table with columns: TACE, Dir, Dtrs, GL, BW, 200 W, 400 W, 600 W, MCW, MBC, MCH, Milk, DTC. Rows include EBV, ACC, Perc and a second set of TACE, SS, Doc, CWT, EMA, Rib, Rump, RBY, IMF, NFI-F, CS, FA, LA.

Selection Indexes

Table with columns: \$A, \$A-L. Rows: \$178, \$312, 84, 85.

Traits Observed: 200WT, 400WT, DOC, Genomics

Notes:

Purchaser: \$

Lot 30

MERLEWOOD STELLAR V277 SV

HOD24V277

DOB: 28/09/2024

Registration Status: HBR

Mating Type: Natural

Genetic Status: AMF,CAF,DDF,NHF

MOHNEN SUBSTANTIAL 272 #
SITZ STELLAR 726D PV
SITZ PRIDE 200B #

CONNEALY IMPRESSION #
MAR INNOVATION 251 PV
MAR FINAL KAHUNA 856 #

Sire: HODR49 MERLEWOOD STELLAR R49 SV

Dam: HODQ118 MERLEWOOD WILCOOLA Q118 #

B/R AMBUSH 28 #
MERLEWOOD B/R AMBUSH E2 #
LAWSONS NEW DESIGN 1407 Z1140 #

BOWMONT ABERDEEN J302 PV
MERLEWOOD WILCOOLA N4 SV
MERLEWOOD WILCOOLA L5 #

February 2026 TransTasman Angus Cattle Evaluation

Table with columns: TACE, Dir, Dtrs, GL, BW, 200 W, 400 W, 600 W, MCW, MBC, MCH, Milk, DTC. Rows include EBV, ACC, Perc and a second set of TACE, SS, Doc, CWT, EMA, Rib, Rump, RBY, IMF, NFI-F, CS, FA, LA.

Selection Indexes

Table with columns: \$A, \$A-L. Rows: \$187, \$358, 77, 57.

Traits Observed: 200WT, 400WT, DOC, Genomics

Notes:

Purchaser: \$



SALE LOTS

Lot 31 MERLEWOOD SUPER TROOPER V179 SV HOD24V179

DOB: 19/08/2024 Registration Status: HBR Mating Type: Natural Genetic Status: AMF,CAF,DDF,NHF

EF COMMANDO 1366 PV
MILLAH MURRAH PARATROOPER P15 PV
MILLAH MURRAH ELA M9 PV

EF COMMANDO 1366 PV
BALDRIDGE COMPASS C041 SV
BALDRIDGE ISABEL Y69 #
BOWMONT ABERDEEN J302 PV
MERLEWOOD BURNETTE Q19 #
MERLEWOOD BURNETTE N52 #

Sire: SJK21S96 GRANITE RIDGE SUPERTROOPER S96 SV
GRANITE RIDGE JACKPOT J23 SV
GRANITE RIDGE QUIET M102 #
GRANITE RIDGE QUIET F28 PV

Dam: HOD21S23 MERLEWOOD BURNETTE S23 #

February 2026 TransTasman Angus Cattle Evaluation

Table with columns: TACE, Dir, Dtrs, GL, BW, 200 W, 400 W, 600 W, MCW, MBC, MCH, Milk, DTC. Rows include EBV, ACC, Perc and SS, Doc, CWT, EMA, Rib, Rump, RBV, IMF, NFI-F, CS, FA, LA.

Selection Indexes table with columns \$A and \$A-L. Values: \$228, \$404, 35, 20.

Traits Observed: 200WT, 400WT, DOC, Genomics

Notes:

Purchaser: \$

Lot 32 MERLEWOOD SUPER TROOPER V30 SV HOD24V30

DOB: 23/07/2024 Registration Status: HBR Mating Type: Natural Genetic Status: AMF,CAF,DDC,NHF

EF COMMANDO 1366 PV
MILLAH MURRAH PARATROOPER P15 PV
MILLAH MURRAH ELA M9 PV

LT DRIVEN 9087 #
MERLEWOOD DRIVEN Q89 SV
MERLEWOOD BURNETTE L2 #
BOWMONT ABERDEEN J302 PV
MERLEWOOD RITA Q5 #
MERLEWOOD RITA N150 #

Sire: SJK21S96 GRANITE RIDGE SUPERTROOPER S96 SV
GRANITE RIDGE JACKPOT J23 SV
GRANITE RIDGE QUIET M102 #
GRANITE RIDGE QUIET F28 PV

Dam: HOD21S76 MERLEWOOD RITA S76 #

February 2026 TransTasman Angus Cattle Evaluation

Table with columns: TACE, Dir, Dtrs, GL, BW, 200 W, 400 W, 600 W, MCW, MBC, MCH, Milk, DTC. Rows include EBV, ACC, Perc and SS, Doc, CWT, EMA, Rib, Rump, RBV, IMF, NFI-F, CS, FA, LA.

Selection Indexes table with columns \$A and \$A-L. Values: \$208, \$360, 58, 55.

Traits Observed: 200WT, 400WT, DOC, Genomics

Notes:

Purchaser: \$

Lot 33 MERLEWOOD KEYSTONE V117 SV HOD24V117

DOB: 08/08/2024 Registration Status: HBR Mating Type: Natural Genetic Status: AMF,CAF,DDF,NHF

RENNYLEA EDMUND E11 PV
LANDFALL KEYSTONE K132 PV
LANDFALL ARCHER H807 SV

TE MANIA BERKLEY B1 PV
PATHFINDER GENESIS G357 PV
PATHFINDER DIRECTION D245 SV
THOMAS GRADE UP 6849 SV
MERLEWOOD THOMAS GRADE UP E10 #
LAWSONS NEW DESIGN 1407 Z1105 #

Sire: HCAQ90 BOONAROO KEYSTONE Q90 PV
BOONAROO GRAVITY G013 PV
BOONAROO PRINCESS K243 SV
BOONAROO PRINCESS G207 #

Dam: HODP81 MERLEWOOD YTHANBRAE P81 #

February 2026 TransTasman Angus Cattle Evaluation

Table with columns: TACE, Dir, Dtrs, GL, BW, 200 W, 400 W, 600 W, MCW, MBC, MCH, Milk, DTC. Rows include EBV, ACC, Perc and SS, Doc, CWT, EMA, Rib, Rump, RBV, IMF, NFI-F, CS, FA, LA.

Selection Indexes table with columns \$A and \$A-L. Values: \$177, \$371, 84, 45.

Traits Observed: 200WT, 400WT, DOC, Genomics

Notes:

Purchaser: \$

Lot 34

MERLEWOOD PROLIFIC V98 SV

HOD24V98

DOB: 05/08/2024

Registration Status: HBR

Mating Type: AI

Genetic Status: AMF,CAF,DDF,NHF

S POWERPOINT WS 5503 PV
ELLINGSON PROFOUND 8155 PV
EA ROSETTA 6157 #

TC ABERDEEN 759 SV
BOWMONT ABERDEEN J302 PV
THE GRANGE BLACKBIRD E172 PV

Sire: USA20136857 ELLINGSON PROLIFIC PV
KROUPAL JUNEAU 797 #
EA QUEEN 8070 #
EA QUEEN 2350 #

Dam: HODQ19 MERLEWOOD BURNETTE Q19 #
IRELANDS LOWANNA L72 SV
MERLEWOOD BURNETTE N52 #
MERLEWOOD BURNETTE K31 #

February 2026 TransTasman Angus Cattle Evaluation

Table with columns: TACE, Dir, Dtrs, GL, BW, 200 W, 400 W, 600 W, MCW, MBC, MCH, Milk, DTC. Rows include EBV, ACC, Perc and SS, Doc, CWT, EMA, Rib, Rump, RBY, IMF, NFI-F, CS, FA, LA.

Selection Indexes

Table with columns: \$A, \$A-L. Rows: \$226, \$400, 37, 22.

Traits Observed: GL, 200WT, 400WT, DOC, Genomics

Notes:

Purchaser: \$

Lot 35

MERLEWOOD AVENGER V15 SV

HOD24V15

DOB: 21/07/2024

Registration Status: HBR

Mating Type: AI

Genetic Status: AMF,CAF,DDF,NHF

MOGCK BULLSEYE PV
BRUNS BLASTER PV
BALDRIDGE BLACKBIRD 11 BAF #

BANQUET NIXON N099 SV
BANQUET QUIRKY Q209 PV
BANQUET IRENE N426 PV

Sire: USA18831338 MUSGRAVE AVENGER PV
BARSTOW CASH #
MUSGRAVE PRIDE 1532 #
MCATL PRIDE ROSIE 926-6222 #

Dam: HOD22T33 MERLEWOOD WILCOOLA T33 #
MAR INNOVATION 251 PV
MERLEWOOD WILCOOLA Q120 #
MERLEWOOD WILCOOLA N4 SV

February 2026 TransTasman Angus Cattle Evaluation

Table with columns: TACE, Dir, Dtrs, GL, BW, 200 W, 400 W, 600 W, MCW, MBC, MCH, Milk, DTC. Rows include EBV, ACC, Perc and SS, Doc, CWT, EMA, Rib, Rump, RBY, IMF, NFI-F, CS, FA, LA.

Selection Indexes

Table with columns: \$A, \$A-L. Rows: \$223, \$392, 41, 28.

Traits Observed: GL, 200WT, 400WT, DOC, Genomics

Notes:

Purchaser: \$

Lot 36

MERLEWOOD TRUE NORTH V28 SV

HOD24V28

DOB: 23/07/2024

Registration Status: HBR

Mating Type: AI

Genetic Status: AMF,CAF,DDF,NHF

COLEMAN CHARLO 0256 PV
S A V RAINFALL 6846 PV
S A V BLACKCAP MAY 4136 #

HA COWBOY UP 5405 PV
FREYS COWBOY LOGIC PV
F A R PRINCESS 148Z #

Sire: USA19405246 SQUARE B TRUE NORTH 8052 PV
CONNEALY CONSENSUS #
ELBANNA OF CONANGA 1209 #
ELBASTA OF CONANGA 9703 #

Dam: HOD22T9 MERLEWOOD MILDRED T9 #
MILLAH MURRAH MARLON BRANDO
MERLEWOOD MILDRED R78 #
MERLEWOOD MILDRED M21 #

February 2026 TransTasman Angus Cattle Evaluation

Table with columns: TACE, Dir, Dtrs, GL, BW, 200 W, 400 W, 600 W, MCW, MBC, MCH, Milk, DTC. Rows include EBV, ACC, Perc and SS, Doc, CWT, EMA, Rib, Rump, RBY, IMF, NFI-F, CS, FA, LA.

Selection Indexes

Table with columns: \$A, \$A-L. Rows: \$219, \$389, 45, 31.

Traits Observed: GL, 200WT, 400WT, DOC, Genomics

Notes:

Purchaser: \$



SALE LOTS

Lot 37

MERLEWOOD QUIRKY V188 SV

HOD24V188

DOB: 22/08/2024

Registration Status: HBR

Mating Type: Natural

Genetic Status: AMF,CAF,DDF,NHF

ABERDEEN ESTATE HOMER H70 PV
 BANQUET NIXON N099 SV
 BANQUET KITE J463 PV
 Sire: VONQ209 BANQUET QUIRKY Q209 PV
 ASCOT HALLMARK H147 PV
 BANQUET IRENE N426 PV
 BANQUET IRENE A266 SV

K C F BENNETT TOTAL #
 MERLEWOOD BENNETT TOTAL J2 SV
 MERLEWOOD BEEAC G27 #
 Dam: HODM12 MERLEWOOD RITA M12 #
 KM BROKEN BOW 002 PV
 MERLEWOOD RITA K53 #
 MERLEWOOD RITA F9 SV

February 2026 TransTasman Angus Cattle Evaluation

TACE	Dir	Dtrs	GL	BW	200 W	400 W	600 W	MCW	MBC	MCH	Milk	DTC
EBV	+0.5	+0.0	-5.9	+5.5	+52	+87	+116	+98	+0.34	+7.0	+11	-4.9
ACC	64%	55%	82%	81%	83%	81%	82%	79%	64%	74%	75%	45%
Perc	71	82	30	83	52	71	63	57	31	72	92	51

TACE	SS	Doc	CWT	EMA	Rib	Rump	RBV	IMF	NFI-F	CS	FA	LA
EBV	+1.0	+17	+62	+5.1	+0.9	+0.5	+0.7	+0.7	-0.22	+0.80	+0.70	+0.72
ACC	79%	75%	70%	68%	68%	70%	59%	73%	61%	64%	64%	60%
Perc	88	64	71	70	30	38	28	89	10	42	5	2

Selection Indexes

\$A	\$A-L
\$192	\$325
74	79

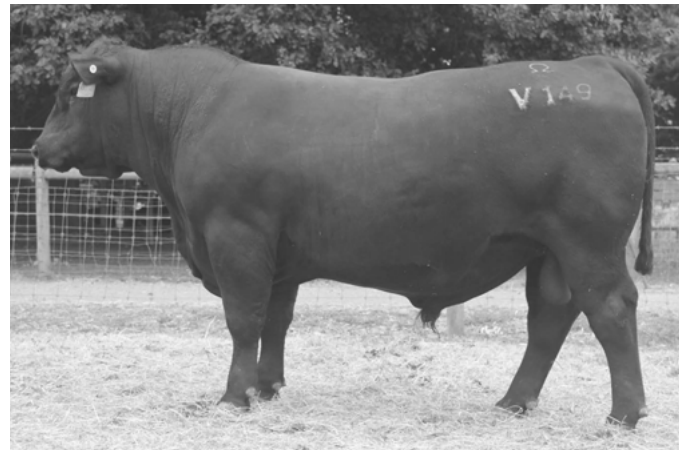
Traits Observed: 200WT, 400WT, DOC, Genomics

Notes:

Purchaser: \$



LOT 5 Merlewood Step Up V64



Lot 10 Merlewood Keystone V149



LOT 14 Merlewood Rawhide V84



LOT 35 Merlewood Avenger V15

RS BANQUET QUIRKY Q209 PV VONQ209

DOB: 14/07/2019 Registration Status: HBR Mating Type: AI Genetic Status: AMF,CAF,DDF,NHF,DWF,MAF,MHF,OHF,OSF,

TE MANIA EMPEROR E343 PV
 ABERDEEN ESTATE HOMER H70 PV
 ABERDEEN ESTATE DREAM F21 #
Sire: VONN099 BANQUET NIXON N099 SV
 MILLAH MURRAH DOC F159 PV
 BANQUET KITE J463 PV
 BANQUET KITE G300 SV

TE MANIA EMPEROR E343 PV
 ASCOT HALLMARK H147 PV
 MILLAH MURRAH BRENDA F123 PV
Dam: VONN426 BANQUET IRENE N426 PV
 BANQUET TIME FRAME Y135 PV
 BANQUET IRENE A266 SV
 BANQUET IRENE W152 #

February 2026 TransTasman Angus Cattle Evaluation

TACE	Dir	Dtrs	GL	BW	200 W	400 W	600 W	MCW	MBC	MCH	Milk	DTC
EBV	-2.6	+4.6	-5.7	+6.5	+58	+107	+138	+108	+0.30	+8.6	+19	+2.7
ACC	72%	61%	87%	87%	94%	93%	92%	88%	65%	74%	80%	56%
Perc	87	40	33	94	26	18	19	41	41	42	42	65

TACE	SS	Doc	CWT	EMA	Rib	Rump	RBY	IMF	NFI-F	CS	FA	LA
EBV	+2.7	+15	+76	+5.8	+0.5	+2.2	+0.7	-1.0	-0.36	+0.64	+0.66	+0.86
ACC	89%	89%	81%	76%	77%	77%	71%	78%	66%	82%	82%	77%
Perc	32	72	30	62	38	15	28	99	5	14	3	11

Selection Indexes

\$A	\$A-L
\$202	\$347
65	65

Traits Observed: GL, CE, BWT, 200WT, 400WT, 600WT, SC, Scan(EMA, Rump, IMF), Genomics

Statistics: Number of Herds: 3, Prog Analysed: 153, Genomic Prog: 38

RS B A R DYNAMIC PV USA19923789

DOB: 24/01/2020 Registration Status: HBR Mating Type: Natural Genetic Status: AMF,CAF,DDF,NHF,DWF,MAF,MHF,OHF,OSF,

BASIN PAYWEIGHT 006S #
 BASIN PAYWEIGHT 1682 PV
 21AR O LASS 7017 #
Sire: USA18827828 DEER VALLEY GROWTH FUND #
 PLATTEMERE WEIGH UP K360 #
 DEER VALLEY RITA 36113 #
 DEER VALLEY RITA 9457 #

A A R TEN X 7008 S A SV
 THREE TREES XCEPTIONAL B0048 #
 ERICA JOY OF CONANGA 4578 #
Dam: USA18919981 B A R BLACKCAP 7235-B0048 #
 POSS TOTAL IMPACT 745 #
 B A R BLACKCAP 3683-745 #
 G A R OBJECTIVE 1895 #

February 2026 TransTasman Angus Cattle Evaluation

TACE	Dir	Dtrs	GL	BW	200 W	400 W	600 W	MCW	MBC	MCH	Milk	DTC
EBV	-1.5	+5.5	-5.3	+2.2	+71	+128	+160	+158	+0.43	+7.7	+13	+1.6
ACC	69%	56%	92%	88%	88%	87%	88%	84%	69%	78%	82%	44%
Perc	83	30	39	19	2	1	3	2	12	60	83	95

TACE	SS	Doc	CWT	EMA	Rib	Rump	RBY	IMF	NFI-F	CS	FA	LA
EBV	+1.6	+14	+89	+8.5	-2.3	-5.4	+0.3	+2.4	+0.00	+1.02	+0.92	+0.86
ACC	86%	79%	81%	79%	77%	75%	69%	81%	62%	97%	97%	61%
Perc	72	77	8	31	91	99	52	53	24	83	38	11

Selection Indexes

\$A	\$A-L
\$209	\$394
57	27

Traits Observed: Genomics

Statistics: Number of Herds: 3, Prog Analysed: 26, Genomic Prog: 4

RS BOONAROO KEYSTONE Q90 PV HCAQ90

DOB: 08/08/2019 Registration Status: HBR Mating Type: ET Genetic Status: AMF,CAF,DDF,NHF

BOOROOMOOKA UNDERTAKEN Y145 PV
 RENNYLEA EDMUND E11 PV
 LAWSONS HENRY VIII Y5 SV
Sire: TFAK132 LANDFALL KEYSTONE K132 PV
 S A V FRONT RUNNER 0713 #
 LANDFALL ARCHER H807 SV
 LANDFALL ARCHER X9 PV

TE MANIA AFRICA A217 PV
 BOONAROO GRAVITY G013 PV
 TE MANIA LOWAN Z618 SV
Dam: HCAK243 BOONAROO PRINCESS K243 SV
 ANVIL DARE DEVIL D037 PV
 BOONAROO PRINCESS G207 #
 VERMONT PRINCESS C160 #

February 2026 TransTasman Angus Cattle Evaluation

TACE	Dir	Dtrs	GL	BW	200 W	400 W	600 W	MCW	MBC	MCH	Milk	DTC
EBV	+9.1	+9.3	-8.1	+0.8	+55	+113	+147	+147	+0.42	+10.0	+21	+1.8
ACC	74%	68%	85%	86%	94%	93%	91%	88%	75%	83%	82%	58%
Perc	5	3	9	6	39	9	9	5	14	19	26	26

TACE	SS	Doc	CWT	EMA	Rib	Rump	RBY	IMF	NFI-F	CS	FA	LA
EBV	+1.8	+20	+86	-4.3	-0.1	-0.5	-0.8	+2.1	-0.22	+0.74	+1.02	+1.04
ACC	87%	90%	81%	77%	77%	78%	71%	79%	69%	81%	81%	77%
Perc	65	51	11	99	52	55	95	61	10	30	63	55

Selection Indexes

\$A	\$A-L
\$189	\$392
76	28

Traits Observed: BWT, 200WT, 400WT(x2), SC, Scan(EMA, Rib, Rump, IMF), DOC, Structure(Claw Set x 1, Foot Angle x 1), Genomics

Statistics: Number of Herds: 1, Prog Analysed: 111, Genomic Prog: 23

RS ELLINGSON PROLIFIC PV USA20136857

DOB: 01/03/2021 Registration Status: HBR Mating Type: Natural Genetic Status: AMF,CAF,DDF,NHF,DWF,MAF,MHF,OHF,OSF,

TEHAMA REVERE # O C C JUNEAU 807J #
 S POWERPOINT WS 5503 PV KOUPAL JUNEAU 797 #
 S QUEEN ESSA 248 # KOUPALS ELBA 187 #
Sire: USA19203612 ELLINGSON PROFOUND 8155 PV Dam: USA19177681 EA QUEEN 8070 #
 CONNEALY CAPITALIST 028 # G V F FORWARD 0141 #
 EA ROSETTA 6157 # EA QUEEN 2350 #
 EA BLACKBIRD 0038 # E A QUEEN 0313 #

February 2026 TransTasman Angus Cattle Evaluation

TACE	Dir	Dtrs	GL	BW	200 W	400 W	600 W	MCW	MBC	MCH	Milk	DTC
EBV	+2.4	+7.7	-4.7	+5.7	+77	+132	+156	+146	+0.25	+6.0	+16	+1.7
ACC	72%	57%	98%	97%	94%	94%	91%	86%	61%	71%	81%	42%
Perc	56	10	49	86	1	1	4	5	57	86	59	65

TACE	SS	Doc	CWT	EMA	Rib	Rump	RBV	IMF	NFI-F	CS	FA	LA
EBV	+1.7	+15	+99	+3.8	-2.6	-4.9	+0.4	+0.7	-0.35	+0.60	+0.58	+0.66
ACC	91%	85%	83%	82%	80%	78%	73%	83%	62%	98%	98%	57%
Perc	68	74	2	83	94	98	46	89	5	10	1	1

Selection Indexes

\$A	\$A-L
\$238	\$430
24	8

Traits Observed: Structure(Claw Set x 1, Foot Angle x 1), Genomics

Statistics: Number of Herds: 44, Prog Analysed: 407, Genomic Prog: 219

RS EZAR STEP UP 9178 PV USA19430597

DOB: 29/01/2019 Registration Status: HBR Mating Type: ET Genetic Status: AMF,CAF,DDF,NHF,DWF,MAF,MHF,OHF,OSF,

CONNEALY IN SURE 8524 # EXAR UPSHOT 0562B #
 G A R SURE FIRE SV EXAR DENVER 2002B #
 CHAIR ROCK 5050 G A R 8086 # EXAR ROYAL LASS 1067 #
Sire: USA18379573 G A R BIG STEP K715 # Dam: USA17929461 BASIN LUCY 4261 #
 G A R PROPHET SV GARDENS WAVE SV
 CHAIR ROCK PROPHET 3131 # BASIN LUCY 1022 #
 CHAIR ROCK 5050 G A R 9099 # BASIN LUCY 262S #

February 2026 TransTasman Angus Cattle Evaluation

TACE	Dir	Dtrs	GL	BW	200 W	400 W	600 W	MCW	MBC	MCH	Milk	DTC
EBV	+5.1	+5.6	-7.0	+4.6	+69	+119	+141	+132	+0.26	+7.9	+16	+3.3
ACC	72%	56%	98%	96%	94%	94%	88%	85%	68%	77%	82%	44%
Perc	31	29	17	67	3	4	15	13	54	56	65	42

TACE	SS	Doc	CWT	EMA	Rib	Rump	RBV	IMF	NFI-F	CS	FA	LA
EBV	+3.3	+19	+75	+11.9	-0.5	-1.6	+0.6	+2.9	+0.13	+0.66	+0.66	+0.78
ACC	91%	86%	82%	81%	79%	78%	72%	82%	63%	98%	97%	68%
Perc	16	56	33	8	62	73	34	41	37	17	3	4

Selection Indexes

\$A	\$A-L
\$269	\$461
5	2

Traits Observed: Structure(Claw Set x 1, Foot Angle x 1), Genomics

Statistics: Number of Herds: 26, Prog Analysed: 280, Genomic Prog: 152

RS GRANITE RIDGE SUPERTROOPER S96 SV SJK21S96

DOB: 29/03/2021 Registration Status: HBR Mating Type: AI Genetic Status: AMF,CAF,DDF,NHF,DWF,MAF,MHF,OHF,OSF,

EF COMPLEMENT 8088 PV TUWHARETOA REGENT D145 PV
 EF COMMANDO 1366 PV GRANITE RIDGE JACKPOT J23 SV
 RIVERBEND YOUNG LUCY W1470 # GRANITE RIDGE WHISPER C46 #
Sire: NMMP15 MILLAH MURRAH PARATROOPER P15 Dam: SJKM102 GRANITE RIDGE QUIET M102 #
 MILLAH MURRAH HIGHLANDER G18 SV TE MANIA INFINITY 04 379 AB #
 MILLAH MURRAH ELA M9 PV GRANITE RIDGE QUIET F28 PV
 MILLAH MURRAH ELA K127 SV TIBOOURRA QUIET V44 (AI) SV

February 2026 TransTasman Angus Cattle Evaluation

TACE	Dir	Dtrs	GL	BW	200 W	400 W	600 W	MCW	MBC	MCH	Milk	DTC
EBV	+6.0	+4.8	-9.3	+1.1	+53	+98	+129	+113	+0.31	+7.0	+13	+2.1
ACC	72%	65%	90%	85%	90%	89%	87%	83%	74%	81%	79%	51%
Perc	23	38	4	8	46	41	35	34	38	71	84	58

TACE	SS	Doc	CWT	EMA	Rib	Rump	RBV	IMF	NFI-F	CS	FA	LA
EBV	+2.1	+16	+86	+7.1	-0.3	-2.0	+0.2	+3.3	+0.27	+0.98	+0.86	+0.96
ACC	81%	88%	78%	73%	73%	74%	66%	76%	68%	75%	75%	71%
Perc	54	70	11	47	57	78	58	33	53	78	25	31

Selection Indexes

\$A	\$A-L
\$213	\$379
52	38

Traits Observed: GL, CE, BWT, 200WT, 400WT, SC, Scan(EMA, Rib, Rump, IMF), Structure(Claw Set x 1, Foot Angle x 1), Genomics

Statistics: Number of Herds: 1, Prog Analysed: 78, Genomic Prog: 8

RS **MERLEWOOD STELLAR R49^{SV}** **HODR49**

DOB: 10/08/2020 Registration Status: HBR Mating Type: AI Genetic Status: AMF,CAF,DDF,NHF

BENFIELD SUBSTANCE 8506 #
 MOHNEN SUBSTANTIAL 272 #
 MOHNEN GLYN MAWR ELBA 1758 #
Sire: USA18397542 SITZ STELLAR 726D^{PV}
 CONNEALY FINAL PRODUCT^{PV}
 SITZ PRIDE 200B #
 SITZ PRIDE 308Y #

ROCKN D AMBUSH 1531 #
 B/R AMBUSH 28 #
 B/R RUBY OF TIFFANY 8250 #
Dam: HODE2 MERLEWOOD B/R AMBUSH E2 #
 BON VIEW NEW DESIGN 1407^{SV}
 LAWSONS NEW DESIGN 1407 Z1140 #
 LAWSONS FUTURE DIRECTION X1549 #

February 2026 TransTasman Angus Cattle Evaluation

TACE	Dir	Dtrs	GL	BW	200 W	400 W	600 W	MCW	MBC	MCH	Milk	DTC
EBV	+5.0	+8.3	-5.9	+2.6	+52	+98	+128	+109	+0.48	+8.2	+13	+0.9
ACC	72%	64%	85%	85%	92%	90%	90%	86%	70%	80%	79%	52%
Perc	32	7	30	25	50	40	37	41	7	50	80	39

TACE	SS	Doc	CWT	EMA	Rib	Rump	RBY	IMF	NFI-F	CS	FA	LA
EBV	+0.9	+20	+69	+5.5	+2.9	+2.1	-0.2	+3.1	+0.12	+0.86	+1.04	+1.02
ACC	84%	88%	79%	73%	74%	75%	67%	76%	66%	78%	78%	73%
Perc	90	52	50	66	6	16	79	37	36	55	67	49

Selection Indexes

\$A	\$A-L
\$231	\$400
32	23

Traits Observed: 200WT(x2), 400WT(x2), Genomics

Statistics: Number of Herds: 1, Prog Analysed: 93, Genomic Prog: 13

RS **MUSGRAVE AVENGER^{PV}** **USA18831338**

DOB: 25/11/2016 Registration Status: HBR Mating Type: Natural Genetic Status: AMF,CAF,DDF,NHF,DWF,MHF,OHF,RGF

MOGCK SURE SHOT #
 MOGCK BULLSEYE^{PV}
 MOGCK MARY 1255 #
Sire: USA17991528 BRUNS BLASTER^{PV}
 CONNEALY RIGHT ANSWER 746 #
 BALDRIDGE BLACKBIRD 11 BAF #
 BALDRIDGE BLACKBIRD 549 BAF #

SITZ DASH 10277 #
 BARSTOW CASH #
 BARSTOW QUEEN W16 #
Dam: USA18199043 MUSGRAVE PRIDE 1532 #
 MCATL UPSIDE #
 MCATL PRIDE ROSIE 926-6222 #
 NAF IN FOCUS ROSIES 6222 #

February 2026 TransTasman Angus Cattle Evaluation

TACE	Dir	Dtrs	GL	BW	200 W	400 W	600 W	MCW	MBC	MCH	Milk	DTC
EBV	+5.9	+4.8	-3.9	+2.7	+59	+108	+132	+93	+0.13	+2.7	+28	+1.9
ACC	85%	70%	97%	98%	97%	96%	96%	94%	63%	73%	90%	52%
Perc	24	38	62	27	20	16	28	66	86	99	3	84

TACE	SS	Doc	CWT	EMA	Rib	Rump	RBY	IMF	NFI-F	CS	FA	LA
EBV	+1.9	+16	+85	+5.5	+0.5	-0.8	+0.6	+0.2	-0.04	+0.96	+0.90	+1.02
ACC	95%	94%	88%	87%	87%	86%	80%	86%	68%	85%	85%	75%
Perc	61	68	13	66	38	60	34	95	21	74	33	49

Selection Indexes

\$A	\$A-L
\$218	\$366
47	50

Traits Observed: Genomics

Statistics: Number of Herds: 19, Prog Analysed: 149, Genomic Prog: 94

RS **POSS RAWHIDE^{PV}** **USA19416968**

DOB: 11/02/2019 Registration Status: HBR Mating Type: Natural Genetic Status: AMF,CAF,DDF,NHF,DWF,MAF,MHF,OHF,OSF,

BASIN PAYWEIGHT 006S #
 BASIN PAYWEIGHT 1682^{PV}
 21AR O LASS 7017 #
Sire: USA18962396 POSS MAVERICK^{PV}
 POSS HOOVER DAM 2509 #
 POSS PRIDE 5163 #
 POSS PRIDE 9526 #

POSS TOTAL IMPACT 745 #
 POSS EASY IMPACT 0119 #
 POSS ELMARETTA 736 #
Dam: USA18631711 POSS BLUEBLOOD 6502 #
 CONNEALY ALL AROUND #
 POSS BLUEBLOOD 920 #
 POSS BLUEBLOOD LADY 5114 #

February 2026 TransTasman Angus Cattle Evaluation

TACE	Dir	Dtrs	GL	BW	200 W	400 W	600 W	MCW	MBC	MCH	Milk	DTC
EBV	+6.3	+7.8	-7.2	+3.1	+69	+110	+149	+148	+0.33	+5.3	+18	+1.8
ACC	80%	64%	98%	97%	96%	96%	95%	90%	65%	74%	89%	52%
Perc	21	10	15	35	3	12	7	5	33	92	48	29

TACE	SS	Doc	CWT	EMA	Rib	Rump	RBY	IMF	NFI-F	CS	FA	LA
EBV	+1.8	+31	+83	+8.2	-1.4	-3.2	+0.1	+2.8	-0.23	+1.36	+1.02	+0.68
ACC	96%	96%	88%	88%	87%	86%	80%	88%	69%	99%	98%	68%
Perc	65	16	15	34	80	90	64	44	9	99	63	1

Selection Indexes

\$A	\$A-L
\$242	\$440
21	5

Traits Observed: Genomics

Statistics: Number of Herds: 31, Prog Analysed: 461, Genomic Prog: 229



SALE LOTS

RS

SQUARE B TRUE NORTH 8052 PV

USA19405246

DOB: 16/08/2018

Registration Status: HBR

Mating Type: Natural

Genetic Status: AMF,CAF,DDF,NHF,DWF,MAF,MHF,OHF,OSF,

O C C PAXTON 730P #
COLEMAN CHARLO 0256 PV
BOHI ABIGALE 6014 #

KMK ALLIANCE 6595 I87 #
CONNELLY CONSENSUS #
BLINDA OF CONANGA 004 #

Sire: USA18578963 S A V RAINFALL 6846 PV
S A V 8180 TRAVELER 004 #
S A V BLACKCAP MAY 4136 #
S A V MAY 2397 #

Dam: USA17029025 ELBANNA OF CONANGA 1209 #
CONNELLY FORWARD #
ELBASTA OF CONANGA 9703 #
ELBA OF CONANGA 3761 #

February 2026 TransTasman Angus Cattle Evaluation

Selection Indexes

Table with columns: TACE, Dir, Dtrs, GL, BW, 200 W, 400 W, 600 W, MCW, MBC, MCH, Milk, DTC, EBV, ACC, Perc, SS, Doc, CWT, EMA, Rib, Rump, RBY, IMF, NFI-F, CS, FA, LA, EBV, ACC, Perc

Table with columns: \$A, \$A-L, \$239, \$385, 24, 34

Traits Observed: Genomics

Statistics: Number of Herds: 81, Prog Analysed: 796, Genomic Prog: 384

RS

S S BRICKYARD PV

USA18860371

DOB: 08/01/2017

Registration Status: HBR

Mating Type: Natural

Genetic Status: AMF,CAF,DDF,NHF,OHF,OSF

SYDGEN C C & AMP; 7 [#]
HOOVER DAM #
ERICA OF ELLSTON C124 #

MCC DAYBREAK #
WOODHILL DAYBREAK U280-X20 #
WOODHILL EVERGEEN 285M-U280 #

Sire: USA17287387 S S NIAGARA Z29 SV
B/R NEW DAY 454 #
JET S S X144 #
JET S S T151 #

Dam: USA18150837 LUCY S S C109 #
C R A BEXTOR 872 5205 608 #
LUCY S S X143 #
LUCY S S R3 #

February 2026 TransTasman Angus Cattle Evaluation

Selection Indexes

Table with columns: TACE, Dir, Dtrs, GL, BW, 200 W, 400 W, 600 W, MCW, MBC, MCH, Milk, DTC, EBV, ACC, Perc, SS, Doc, CWT, EMA, Rib, Rump, RBY, IMF, NFI-F, CS, FA, LA, EBV, ACC, Perc

Table with columns: \$A, \$A-L, \$251, \$424, 14, 10

Traits Observed: Genomics

Statistics: Number of Herds: 42, Prog Analysed: 346, Genomic Prog: 206

Angus Australia Disclaimer and Privacy Information



Attention Buyer

Animal details included in this catalogue, including but not limited to pedigree, DNA information, Estimated Breeding Values (EBVs) and Index values, are based on information provided by the breeder or owner of the animal. Whilst all reasonable care has been taken to ensure that the information provided in this catalogue was correct at the time of publication, Angus Australia will assume no responsibility for the accuracy or completeness of the information, nor for the outcome (including consequential loss) of any action taken based on this information.

Parent Verification Suffixes

The animals listed within this catalogue including its pedigree, are displaying a Parent Verification Suffix which indicates the DNA parent verification status that has been conducted on the animal. The Parent Verification Suffixes that will appear at the end of each animal's name.

The suffix displayed at the end of each animal's name indicates the DNA parentage verification that has been conducted by Angus Australia.

- PV: both parents have been verified by DNA.
- SV: the sire has been verified by DNA.
- DV: the dam has been verified by DNA.
- #: DNA verification has not been conducted.
- E: DNA verification has identified that the sire and/or dam may possibly be incorrect, but this cannot be confirmed conclusively.

Privacy Information

In order for Angus Australia to process the transfer of a registered animal in this catalogue, the vendor will need to provide certain information to Angus Australia and the buyer consents to the collection and disclosure of that information by Angus Australia in certain circumstances. If the buyer does not wish for his or her information to be stored and disclosed by Angus Australia, the buyer must complete the form included below and forward it to Angus Australia. If the form is not completed, the buyer will be taken to have consented to the disclosure of such information.

Buyers option to opt out of disclosing personal information to Angus Australia

If you do not complete this form, you will be taken to have consented to Angus Australia using your name, address and phone number for the purposes of effecting a change of registration of the animal(s) that you have purchased, maintaining its database and disclosing that information to its members on its website.

I, the buyer of animals with the following idents _____

from member _____ (name) do not consent to Angus Australia using my name address and phone number for the purposes of effecting a change of registration of the animals I have mentioned above that I have purchased, maintaining its database and disclosing that information to its members on its website.

Authorised Name: _____ Signature: _____

Date: _____

Please forward this completed consent form to Angus Australia, 86 Glen Innes Road, Armidale NSW 2350



BRINGING YOUR NEW BULL HOME



When purchasing a bull, care and handling after the sale can be as important as the purchase itself. Looking after your bull well during the initial stages of his working life may ensure longevity and success within your breeding herd.

Purchase

Temperament is an important characteristic when selecting a bull. Selecting a bull that may be flighty or aggressive will make life difficult for you each time he is handled.

Note which bulls continually push to the centre of a mob, run around, or are unreasonably nervous, aggressive or excited.

At the sale, note any changes of temperament by individual bulls. Some bulls that are quiet in the yard or paddock may not like the pressure and noise of the auction and become excited. Others that were excited beforehand get much worse in the sale ring and can really perform. Use the yard or paddock behaviour as a guide, rather than the temperament shown in the ring.

Delivery

When transporting your new bull insurance against loss in transit, accidental loss of use, or infertility, is sometimes provided by vendors. Where it is not, it is worth considering. After purchase tips:

- When purchasing, ask which health treatments he has received.
- Treat and handle him quietly at all times - no dogs, no buzzers. Talk to him and give him time and room to make up his mind.
- With more than one bull from different origins, you must be able to separate them on the truck.
- Make sure that the truck floor is covered to prevent bulls from slipping. Sand, sawdust or a floor grid will prevent bulls from being damaged by going down in transit.
- If you can arrange it, put a few quiet cows or steers on the truck with the bull. Let them down into a yard with the bulls for a while before loading and after unloading.
- Unload and reload during the trip as little as possible. If necessary, rest with water and feed. Treat bulls kindly your impatience or nervousness is easily transmitted to an animal unfamiliar to you and unsure of his environment.

If you use a professional carrier:

- Make sure the carrier knows which bulls can be mixed together.

- Discuss with the carrier, resting procedures for long trips, expected delivery time, truck condition and quiet handling.
- Give ear tag and brand numbers to the carrier and make sure you have the carrier's phone number.
- If buying bulls from interstate, organise any necessary health tests before leaving and work out if any other requirements must be met before cattle can come into another State.

When buying bulls from far away, you may often have to fit in with other delivery arrangements to reduce cost. You should make it clear how you want your bulls handled.

Arrival

When the bull or bulls arrive home, unload them at the yards into a group of house cows, steers or herd cows. Never jump them from the back of a truck directly into a paddock—it may be the last time you see them. Bulls from different origins should be put into separate yards with other cattle for company.

Provide hay and water, then leave them alone until the next morning.

The next day, bulls should receive routine health treatments. If they have not been treated before, all bulls should be vaccinated with:

- 5-in-1 vaccine;
- vibriosis vaccine;
- leptospirosis vaccine (if in areas like the Hunter where leptospirosis exists);
- three-day sickness vaccine (if in areas where this sickness can cause problems).

Give particular attention to preventing new bulls bringing vibriosis into a herd. Vibriosis, a sexually transmitted disease, causes infertility and abortions and is most commonly introduced to a clean herd by an infected bull.

These bulls show no signs of the illness. Vaccinated bulls are free from vibriosis, so vaccinating bulls against the disease should be a routine practice. Vaccination involves two injections, 4–6 weeks apart, at the time of introduction, and then a booster shot every year. Complete the vaccinations 4 weeks before joining.



BRINGING YOUR NEW BULL HOME



Consult with your veterinarian and draw up a policy for treating bulls on arrival and then annually. Bulls should be drenched to prevent introducing worms and, if necessary, should be treated for lice. Plan to give follow-up vaccinations 4–6 weeks later. Leave the bulls in the yards for the next day or two on feed and water to allow them to settle down with other stock for company. A bull's behaviour will decide how quickly he can be moved out to paddocks.

Mating new young bulls

Newly purchased young bulls should not be placed with older herd bulls for multiple-sire joining. The older, dominant bull will not allow the young bulls to work, and will knock them around while keeping them away from the cows. Use new bulls in either single-sire groups or with young bulls their own age. If a number of young bulls are to be used together, run them together for a few weeks before joining starts. They sort out their pecking order quickly and have few problems later. When the young bulls are working, inspect them regularly and closely.

Managing Older Herd Bulls

Older working bulls also need special care and attention before mating starts. They should be tested or checked every year for physical soundness, testicle tone, and serving capacity or ability. All bulls to be used must be free-moving, active and in good condition. Working bulls may need supplementary feeding before the joining season to bring up condition.

During mating

- Check bulls at least twice each week for the first 2 months. Get up close to them and watch each bull walk; check for swellings around the sheath and for lameness.
- Have a spare bull or bulls available to replace any that break down. Replace any suspect bull immediately.
- Rotate bulls in single-sire groups to make sure that any bull infertility is covered. Single-sire joining works well but it has risks. The bulls must be checked regularly and carefully, or the bulls should be rotated every one or two cycles.

Bulls are a large investment for breeding herds and they have a major effect on herd fertility. A little time and attention to make sure they are fit, free from disease and actively working is well worthwhile.

Northern Australia

Although the Angus breed originated in a cooler climate, they can adapt to subtropical regions with many straightbred and cross bred producers finding success in Northern Australia. Some of the following information may also be helpful for new bulls located in more temperate climates.

Adaptation

They key to Northern success for Angus is that cattle introduced from the Southern regions of Australia be allowed to adapt to their new environment before commencing their working life. If possible, a break of 3 months is advisable before you set your bull to work.

Purchase in cooler months

Ensure your bulls are in good condition before they do commence their working life. The cooler months are an ideal time to purchase and introduce Angus cattle, allowing them plenty of time to acclimatise.

Change of feed source

When inducting Angus cattle into your herd consider their source of feed. Have you taken an animal which has been supplemented on grain straight to a dry pasture? Animals should be gradually changed over to their new feed to ensure they do not lose condition. This may involve using supplements which could include dry lick/urea blocks.

Managing Cattle Ticks

For ticky areas, bulls should be vaccinated prior to transport and given another booster afterwards. Remember male are more susceptible to ticks than females.

**Information is provided by the Department of Primary Industries NSW. For further information visit www.dpi.nsw.gov.au or www.angusaustralia.com.au.*

**FOR MORE INFORMATION
ON GUIDELINES FOR
THE RELOCATION &
ONGOING MANAGEMENT
OF ANGUS BULLS.**



ANGUS

office@angusaustralia.com.au | 02 6773 4600 | Angus Australia Locked Bag 11, Armidale NSW 2350
www.angusaustralia.com.au





BANQUET QUIRKY Q209



BOONAROO KEYSTONE Q90



MERLEWOOD STELLAR R49



EZAR STEP UP 9178



POSS RAWHIDE



ELLINGSON PROLIFIC

LOT 23
MERLEWOOD
STELLAR V237

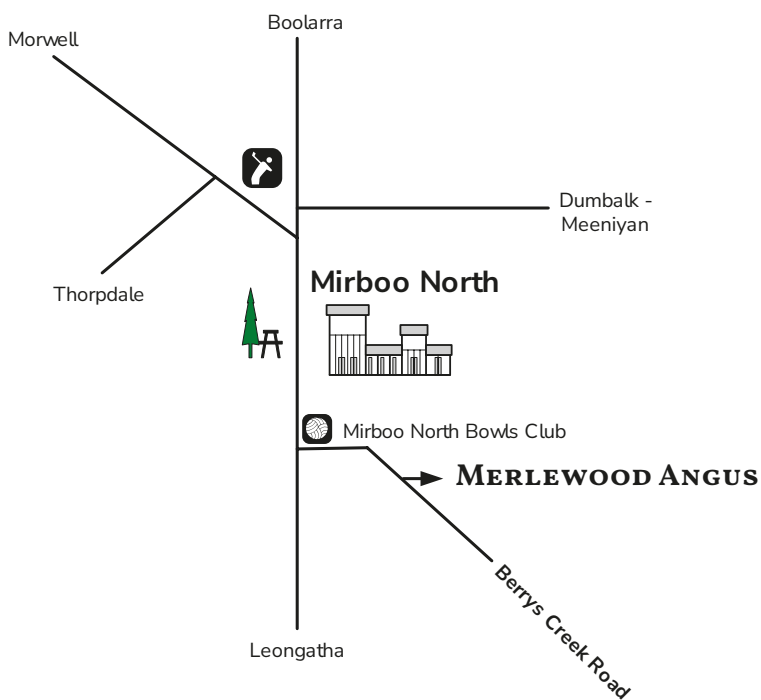


LOT 28
MERLEWOOD
RAWHIDE V82



LOT 34
MERLEWOOD
PROLIFIC V98





Follow us

Facebook /merlewoodangusblackcattle

Instagram /merlewoodangus

www.merlewoodangus.com.au

Stud Principals

Daniel and Anne Marie Barrow

M. 0425 862 941

E. merlewoodangus@bigpond.com

Breed Consultant :

Wille Milne M.0428 793 521



Australia's Livestock Marketplace



Ross Milne M. 0408 057 558

Hayden Hanratty M. 0429 181 672

Ryan Bajada M. 0435 411 536



Tim Woodham M.0439 015 115

Peter Godbolt M. 0457 591 929

Brian McCormack 0407 931 735

